

KEY PLAN

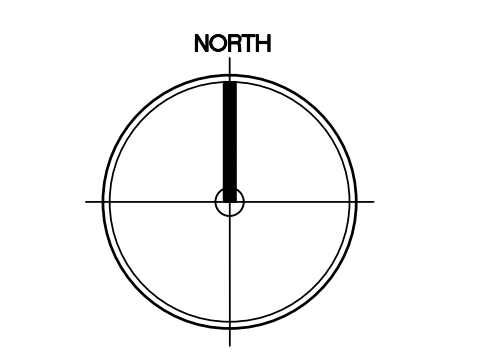


1 VIEW OF LOWER PLAZA FROM THE EAST



2 VIEW OF UPPER PLAZA FROM THE EAST

NO	DATE	REVISION
2	2019-06-07	ISSUED FOR DRC
1	2019-05-02	ISSUED FOR DP APPLICATION



SCALE:

**Buttjes Architecture Inc.**

Telephone: (604) 288 3700  
 Facsimile: (604) 288 6081  
 www.buttjesarchitecture.com  
 3707 First Avenue Burnaby, BC  
 Canada V5C 2V6

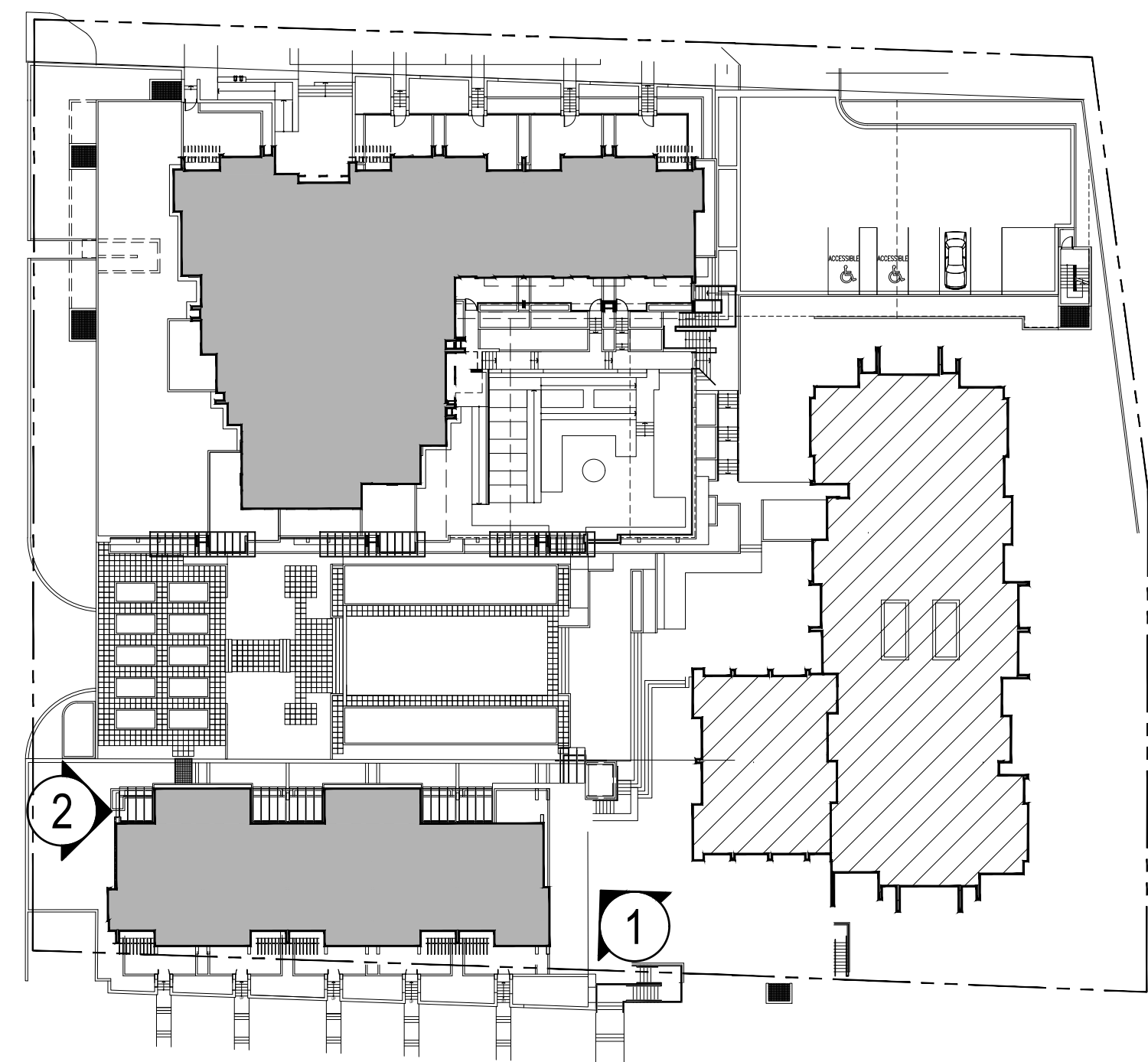
This material is an instrument of service and remains the sole property of Buttjes Architecture Incorporated. Reproduction or use in any form without written consent and name of Buttjes Architecture Incorporated.

**AMBLESIDE TOWER**  
 1552 ESQUIMALT AVENUE, WEST VANCOUVER B.C.



PROJECT No. : 1502  
 SCALE : AS NOTED  
 PLOT DATE : 2019-07-12  
 DRAWN BY :  
 CHECKED BY :

DRAWING #:  
**DPa6.03**



KEY PLAN

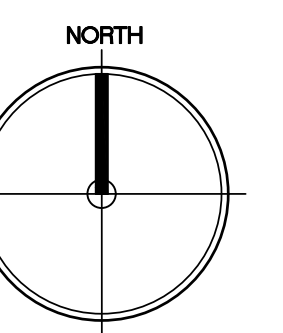


1 VIEW OF ELEVATOR ENTRY FOR DUCHESS FLATS



2 VIEW OF REAR EXT. WALKWAY OF DUCHESS FLATS

2	2019-06-07	ISSUED FOR DRG
1	2019-05-02	ISSUED FOR DP APPLICATION
NO	17-11-10	REVISION



SCALE:

**Buttjes Architecture Inc.**  
 Telephone: (604) 298 3700  
 Facsimile: (604) 298 6081  
 www.buttjesarchitecture.com  
 3707 First Avenue Burnaby, BC  
 Canada V5C 2V6

This material is an instrument of service and remains the exclusive property of Buttjes Architecture Incorporated. Reproduction or its use is prohibited without written consent and name of Buttjes Architecture Incorporated.

**AMBLESIDE TOWER**  
 1552 ESQUIMALT AVENUE, WEST VANCOUVER B.C.



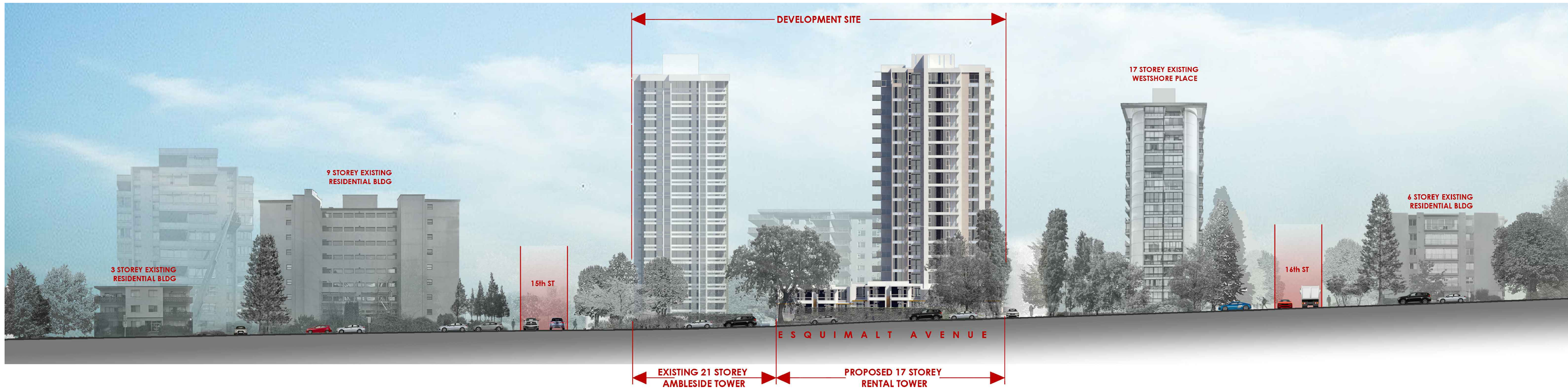
Wall Financial Corporation  
 1010 Burrard Street  
 Vancouver, British Columbia V6Z 2R9

PROJECT No. :	1502
SCALE :	AS NOTED
PLOT DATE :	2019-07-12
DRAWN BY :	
CHECKED BY :	

DRAWING #:

**DPa6.04**

3D VIEWS  
 DUCHESS FLATS



**1 North Side Streetscape (ESQUIMALT AVE)**

Scale:



**2 East Side Streetscape (15th STREET)**

Scale:

NO	DATE	REVISION
2	2019-06-07	ISSUED FOR DRG
1	2019-05-02	ISSUED FOR DP APPLICATION

SEAL:

**Butjes Architecture Inc.**

Telephone: (604) 288 3700  
 Facsimile: (604) 288 6081  
 www.butjesarchitecture.com  
 3707 First Avenue Burnaby, BC  
 Canada V5C 2V6

This material is an instrument of service and remains the exclusive property of Butjes Architecture Incorporated. Reproduction or its use is prohibited without written consent and name of Butjes Architecture Incorporated.

**AMBLESIDE TOWER**  
 1552 ESQUIMALT AVENUE, WEST VANCOUVER B.C.



Wall Financial Corporation  
 1010 Burrard Street  
 Vancouver, British Columbia V6Z 2R0

PROJECT No. :	1502
SCALE :	AS NOTED
PLOT DATE :	2019-07-12
DRAWN BY :	
CHECKED BY :	

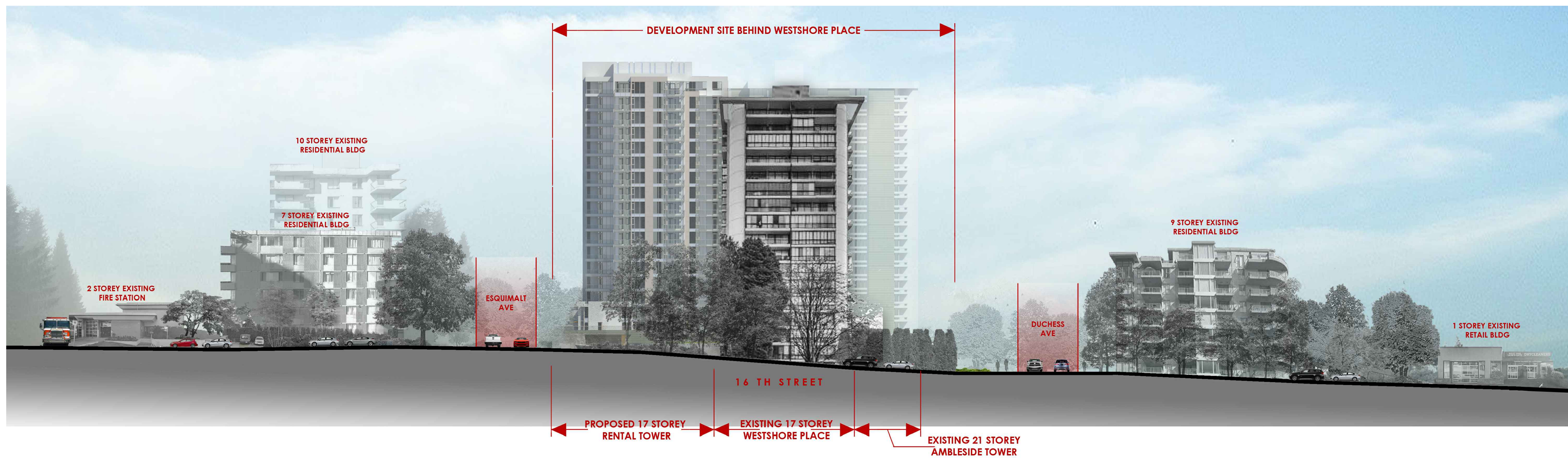
DRAWING #:

**DPa6.05**

STREETSCAPE  
 (North + East)



**1 South Side Streetscape (DUCHESS AVE)**  
Scale:



**2 West Side Streetscape (16th STREET)**  
Scale:

NO	DATE	REVISION
2	2019-06-07	ISSUED FOR DRC
1	2019-05-02	ISSUED FOR DP APPLICATION

SEAL:

**Buttjes Architecture Inc.**

Telephone: (604) 268 3700  
 Facsimile: (604) 268 6081  
 www.buttjesarchitecture.com  
 3707 First Avenue Burnaby, BC  
 Canada V5C 2V6

This material is an instrument of service and remains the exclusive property of Buttjes Architecture Incorporated. Reproduction or its use is prohibited without written consent and name of Buttjes Architecture Incorporated.

**AMBLESIDE TOWER**  
1552 ESQUIMALT AVENUE, WEST VANCOUVER B.C.

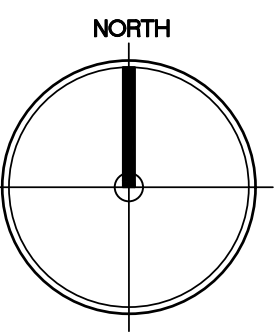


PROJECT No. :	1502
SCALE :	AS NOTED
PLOT DATE :	2019-07-12
DRAWN BY :	
CHECKED BY :	

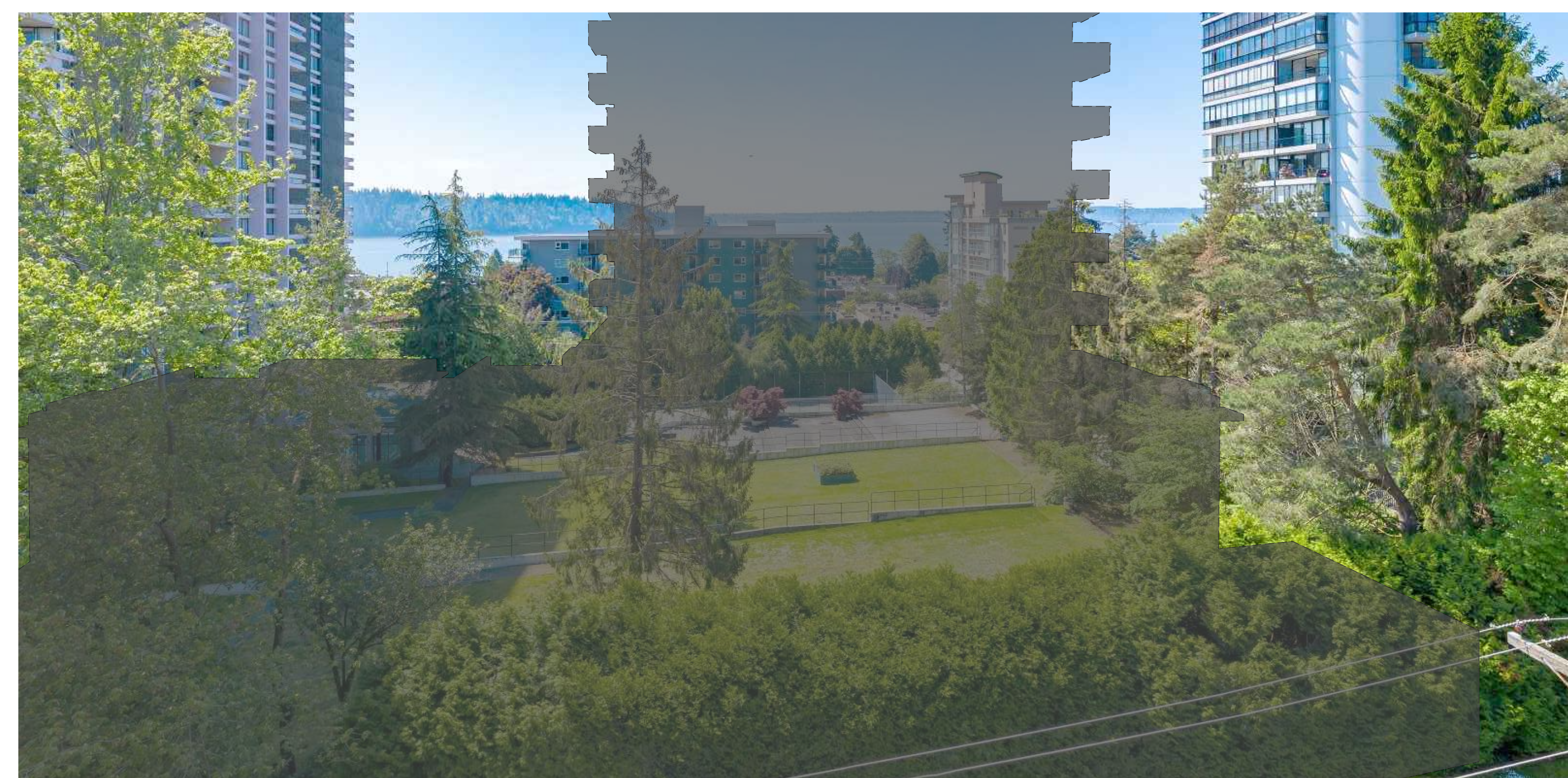
DRAWING #:  
**DPa6.06**

STREETSCAPE  
(South + West)

Reference: D:\Projects\1502 - Ambleside Tower\1502 Project Images.dwg - DPa6.06  
 Last Saved: Jul 09/19 3:36pm - Plotted: Jul 12/19 - kwh



**Site Plan - Camera Location Reference**  
Scale:



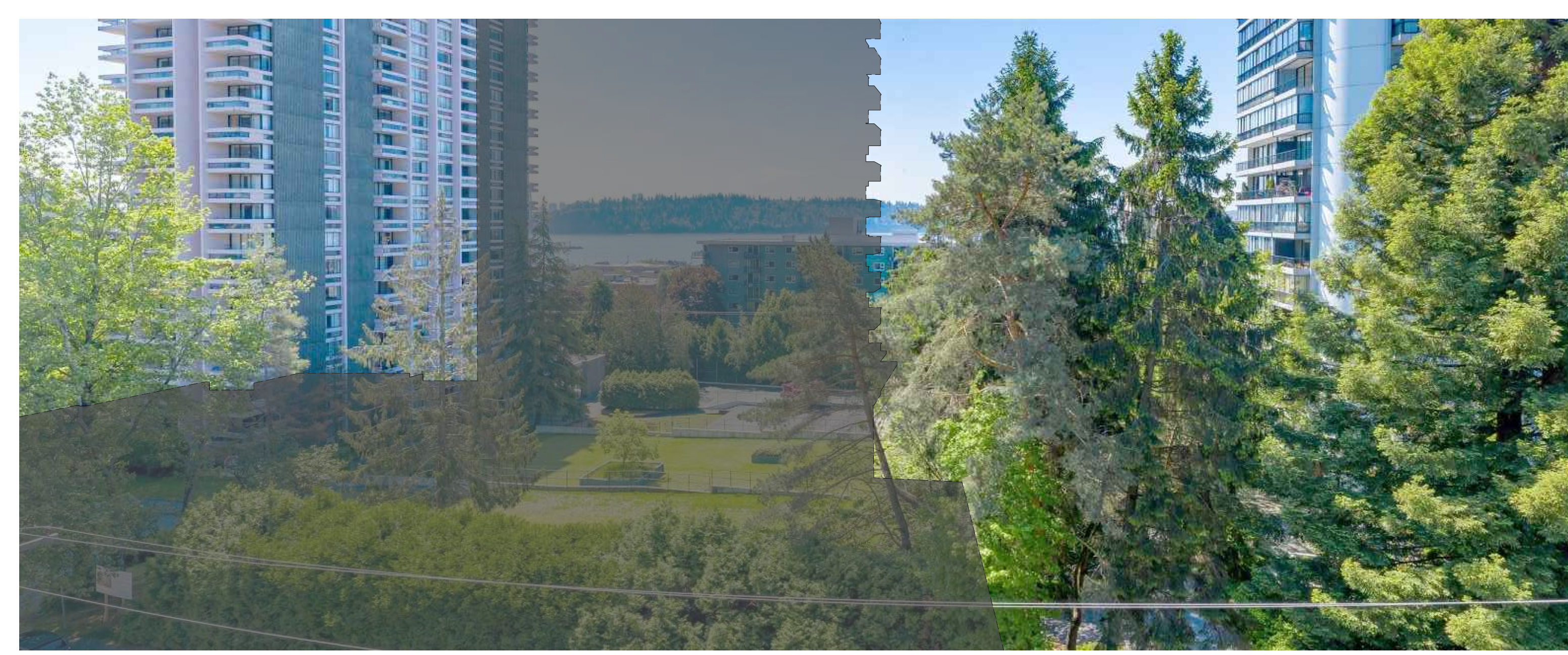
**3 Camera 2 - View from Building Midheight (Level 6)**  
Scale:



**1 Camera 1 - View from Building Level 4**  
Scale:



**4 Camera 2 - View from Penthouse Level**  
Scale:



**2 Camera 1 - View from Penthouse Level**  
Scale:

2	2019-06-07	ISSUED FOR DRG
1	2019-05-02	ISSUED FOR DP APPLICATION
NO	DATE	REVISION

SEAL:

**Buttjes Architecture Inc.**

Telephone: (604) 288 3700  
Facsimile: (604) 288 6081  
www.buttjesarchitecture.com  
3707 First Avenue Burnaby, BC  
Canada V5C 2V6

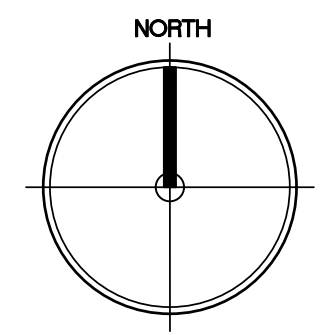
This material is an instrument of service and remains the exclusive property of Buttjes Architecture Incorporated. Reproduction or its use is prohibited without written consent and name of Buttjes Architecture Incorporated.

**AMBLESIDE TOWER**  
1552 ESQUIMALT AVENUE, WEST VANCOUVER B.C.



Wall Financial Corporation  
1910 Burrard Street,  
Vancouver, British Columbia V6Z 2R9

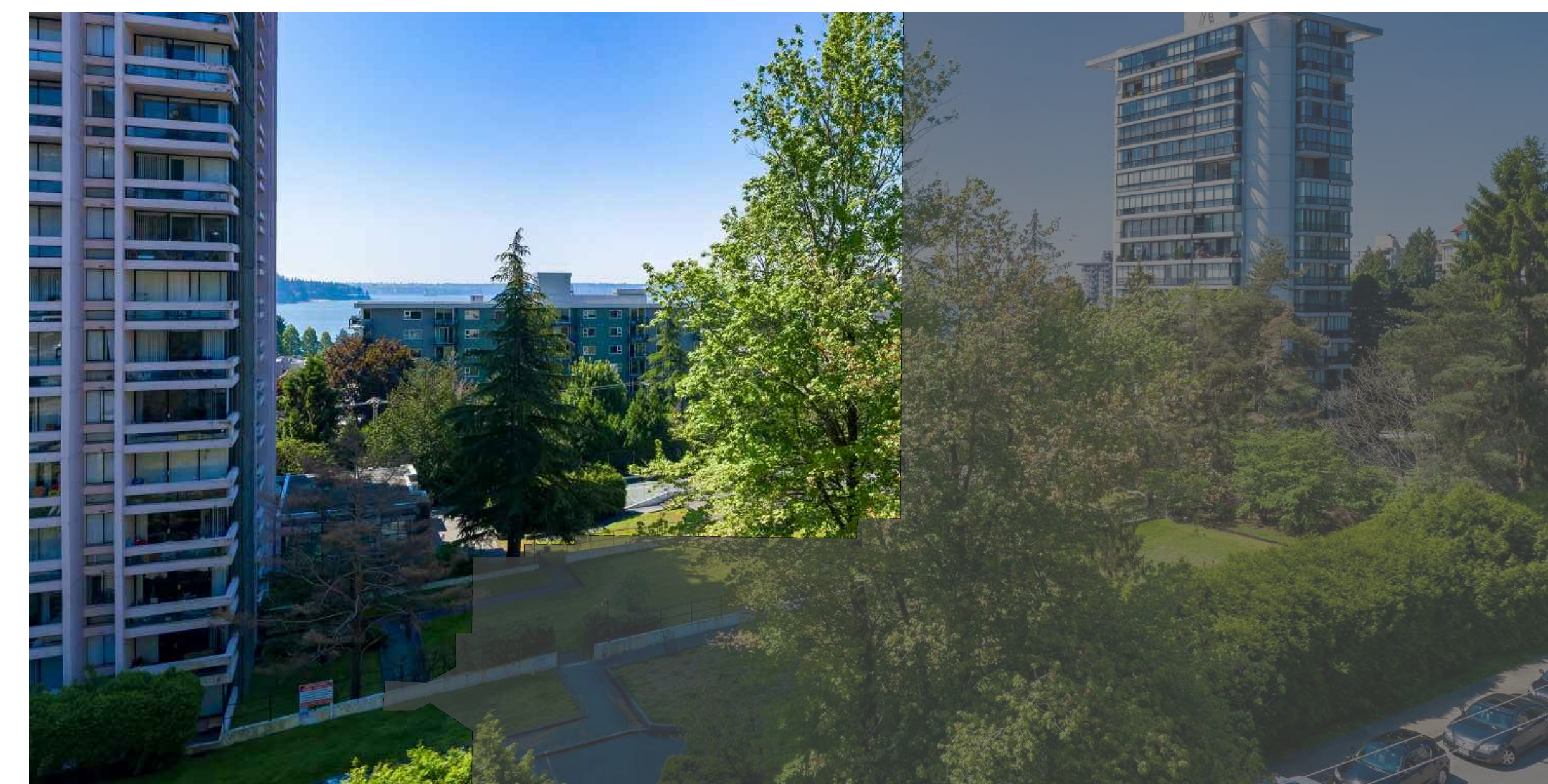
PROJECT No. : 1502  
SCALE : AS NOTED  
PLOT DATE : 2019-07-12  
DRAWN BY :  
CHECKED BY :  
DRAWING #: **DPa6.07**



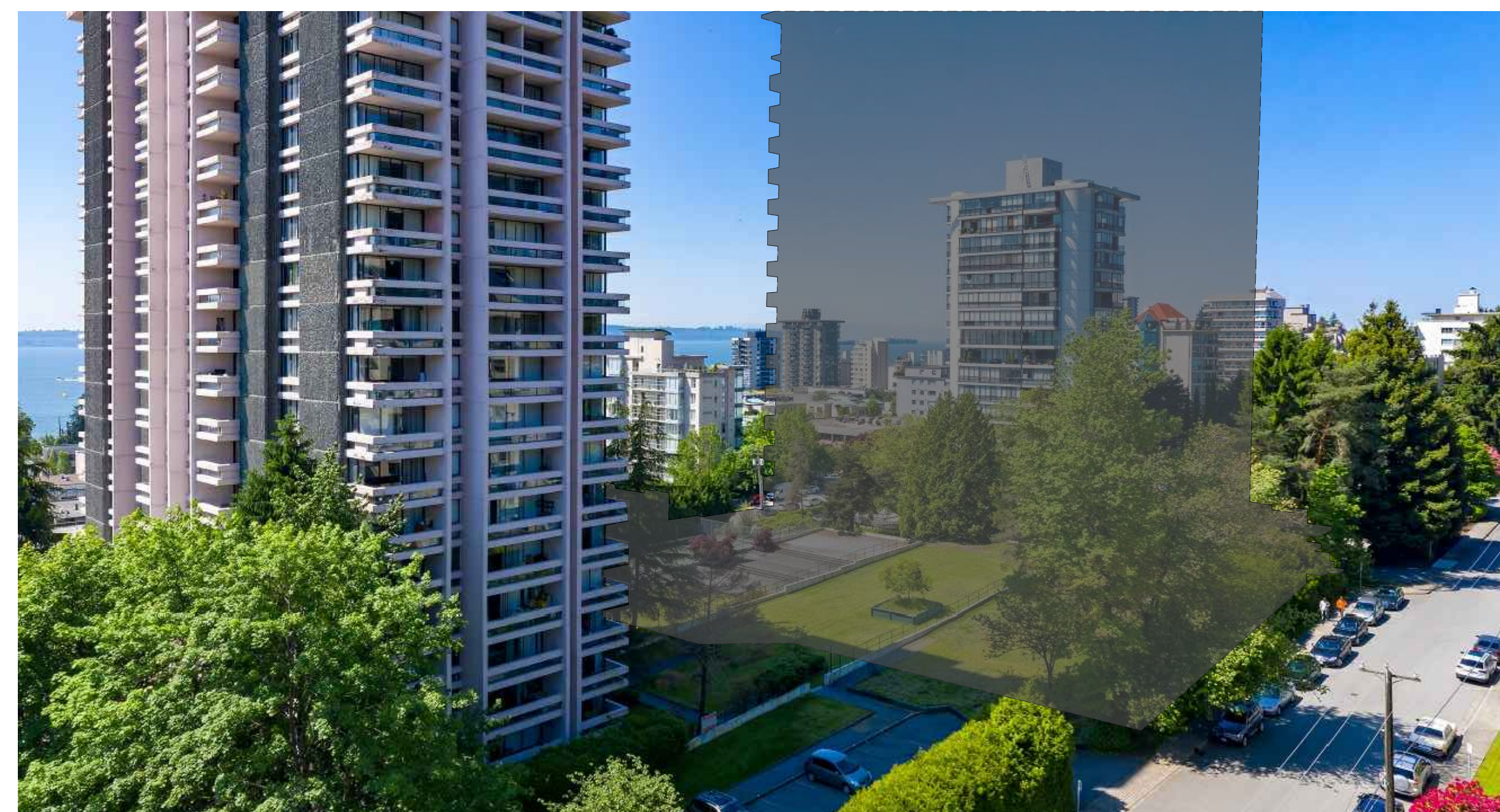
**3** Site Plan - Camera Location Reference  
Scale:



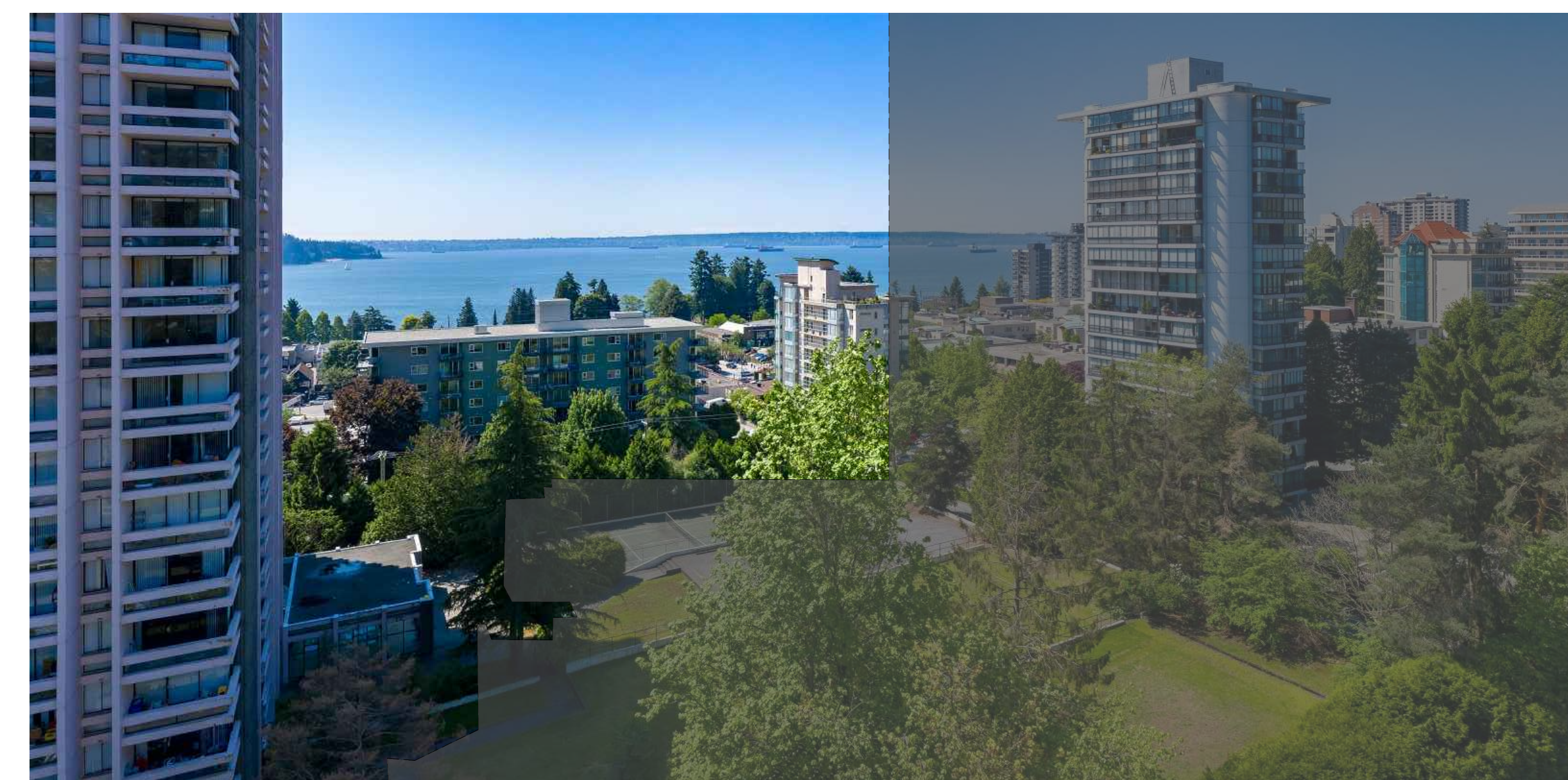
**3** Camera 4 - View from Building Midheight (Level 5)  
Scale:



**1** Camera 3 - View from Building Midheight (Level 6)  
Scale:



**4** Camera 4 - View from Penthouse Level  
Scale:



**2** Camera 3 - View from Penthouse Level  
Scale:

NO.	DATE	REVISION
2	2019-06-07	ISSUED FOR DRG
1	2019-05-02	ISSUED FOR DP APPLICATION

SEAL:

**Butjes Architecture Inc.**

Telephone: (604) 268 3700  
Facsimile: (604) 268 6081  
www.butjesarchitecture.com  
3707 First Avenue Burnaby, BC  
Canada V5C 2V6

This material is an instrument of service and remains the exclusive property of Butjes Architecture Incorporated. Reproduction or its use is prohibited without written consent and name of Butjes Architecture Incorporated.

**AMBLESIDE TOWER**  
1552 ESQUIMALT AVENUE, WEST VANCOUVER B.C.



Wall Financial Corporation  
1010 Burrard Street,  
Vancouver, British Columbia V6Z 2R9

PROJECT No. : 1502

SCALE : AS NOTED

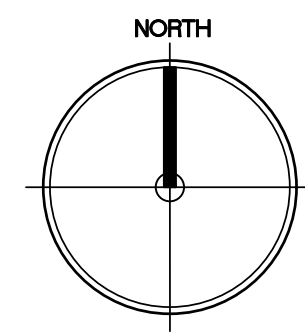
PLOT DATE : 2019-07-12

DRAWN BY :

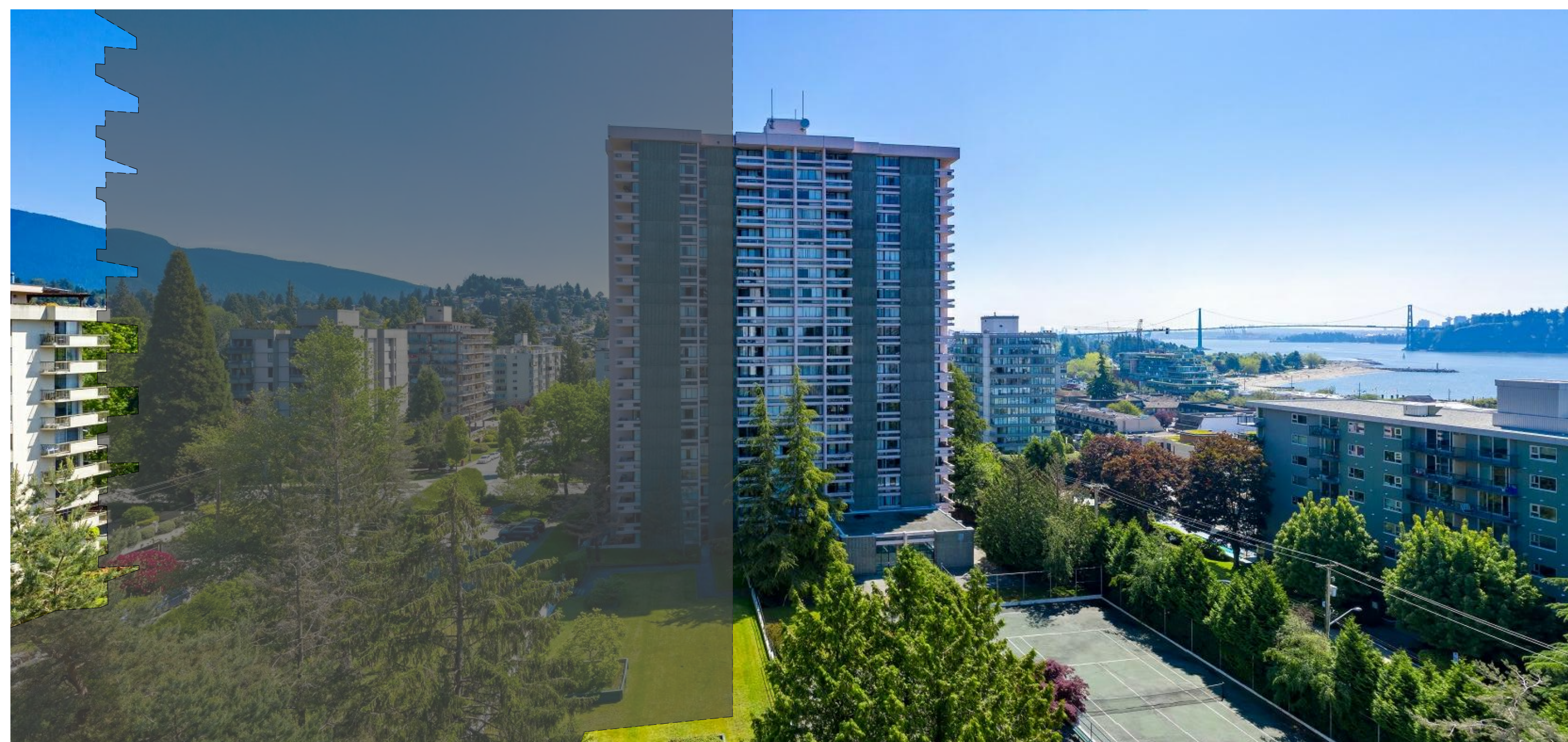
CHECKED BY :

DRAWING #:

**DPa6.08**



**Site Plan - Camera Location Reference**  
Scale:



**3 Camera 6 - View from Building Midheight (Level 9)**  
Scale:



**1 Camera 5 - View from Building Midheight (Level 10)**  
Scale:



**4 Camera 6 - View from Penthouse Level**  
Scale:



**2 Camera 5 - View from Penthouse Level**  
Scale:

NO	DATE	REVISION
2	2019-06-07	ISSUED FOR DRG
1	2019-05-02	ISSUED FOR DP APPLICATION

SEAL:

**Buttjes Architecture Inc.**  
Telephone: (604) 288 3700  
Facsimile: (604) 288 6081  
www.buttjesarchitecture.com  
3707 First Avenue Burnaby, BC  
Canada V5C 2V6

This material is an instrument of service and remains the exclusive property of Buttjes Architecture Incorporated. Reproduction or its use is prohibited without written consent and name of Buttjes Architecture Incorporated.

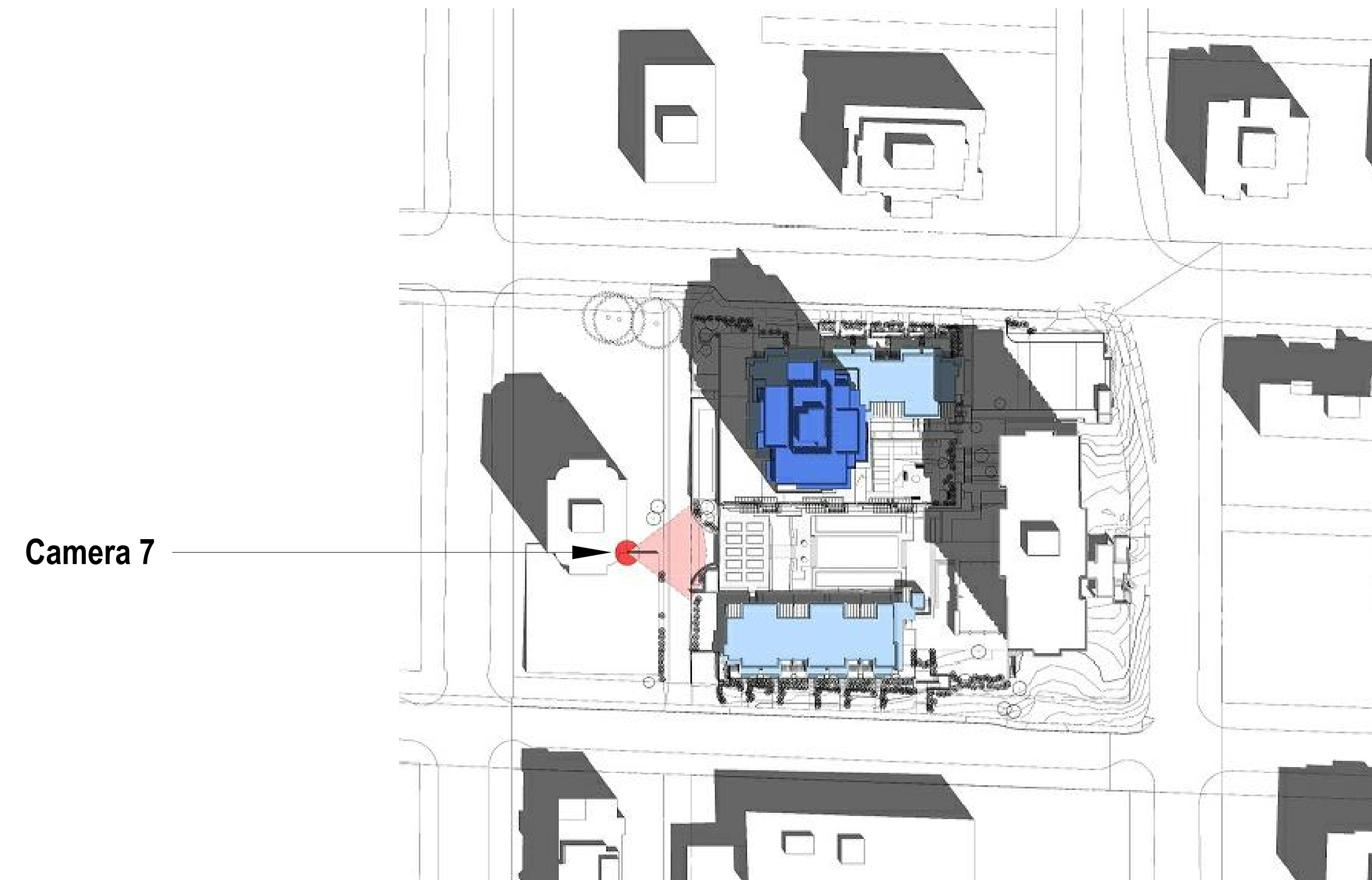
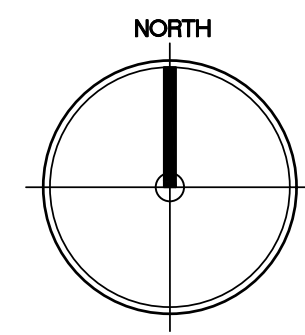
**AMBLESIDE TOWER**  
1552 ESQUIMALT AVENUE, WEST VANCOUVER B.C.



Wall Financial Corporation  
1910 Burrard Street,  
Vancouver, British Columbia V6Z 2R9

PROJECT No. : 1502  
SCALE : AS NOTED  
PLOT DATE : 2019-07-12  
DRAWN BY :  
CHECKED BY :

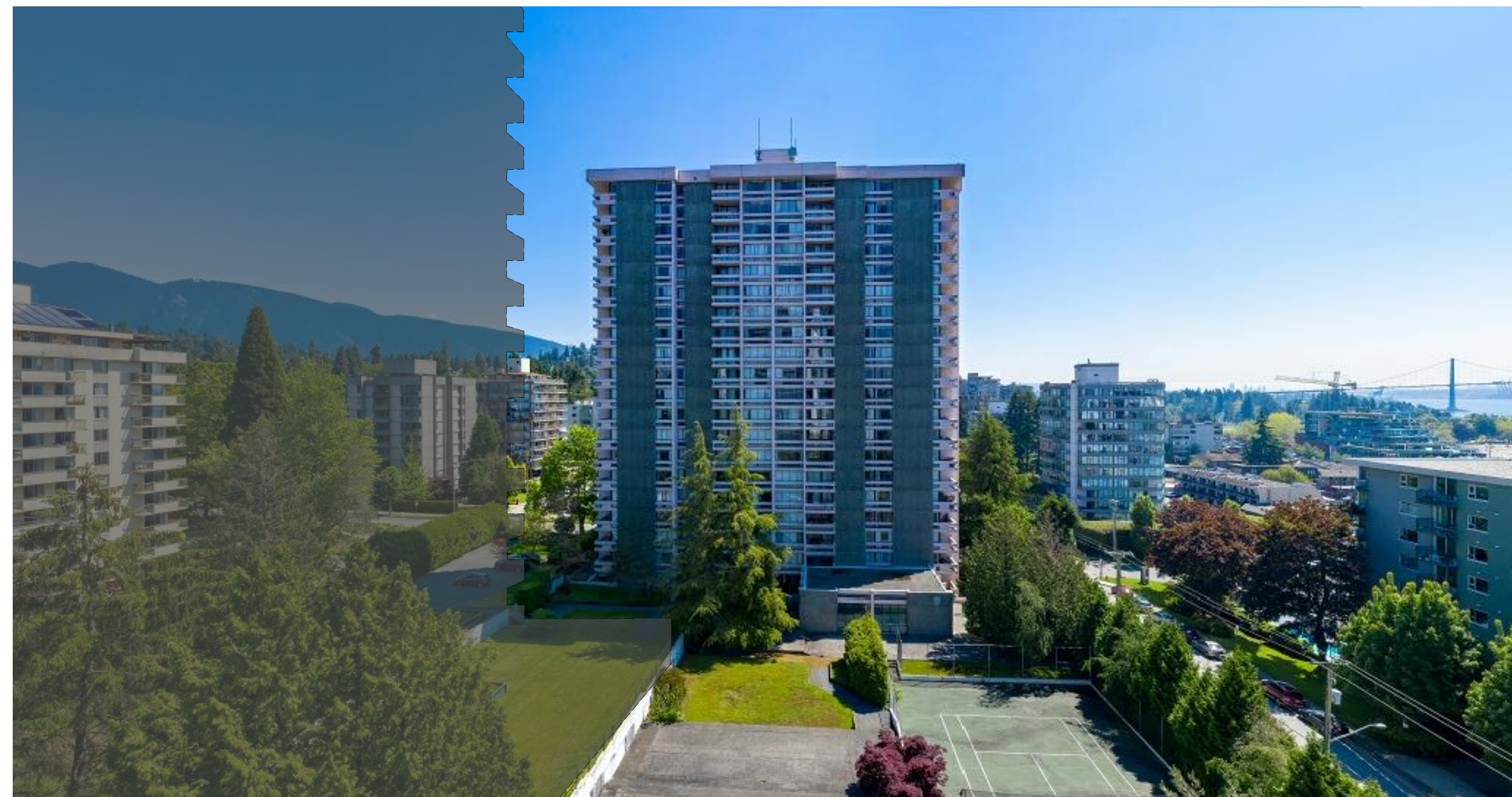
DRAWING #:  
**DPa6.09**  
VIEW IMPACT ANALYSIS  
(CAMERA 5 + 6)



Camera 7

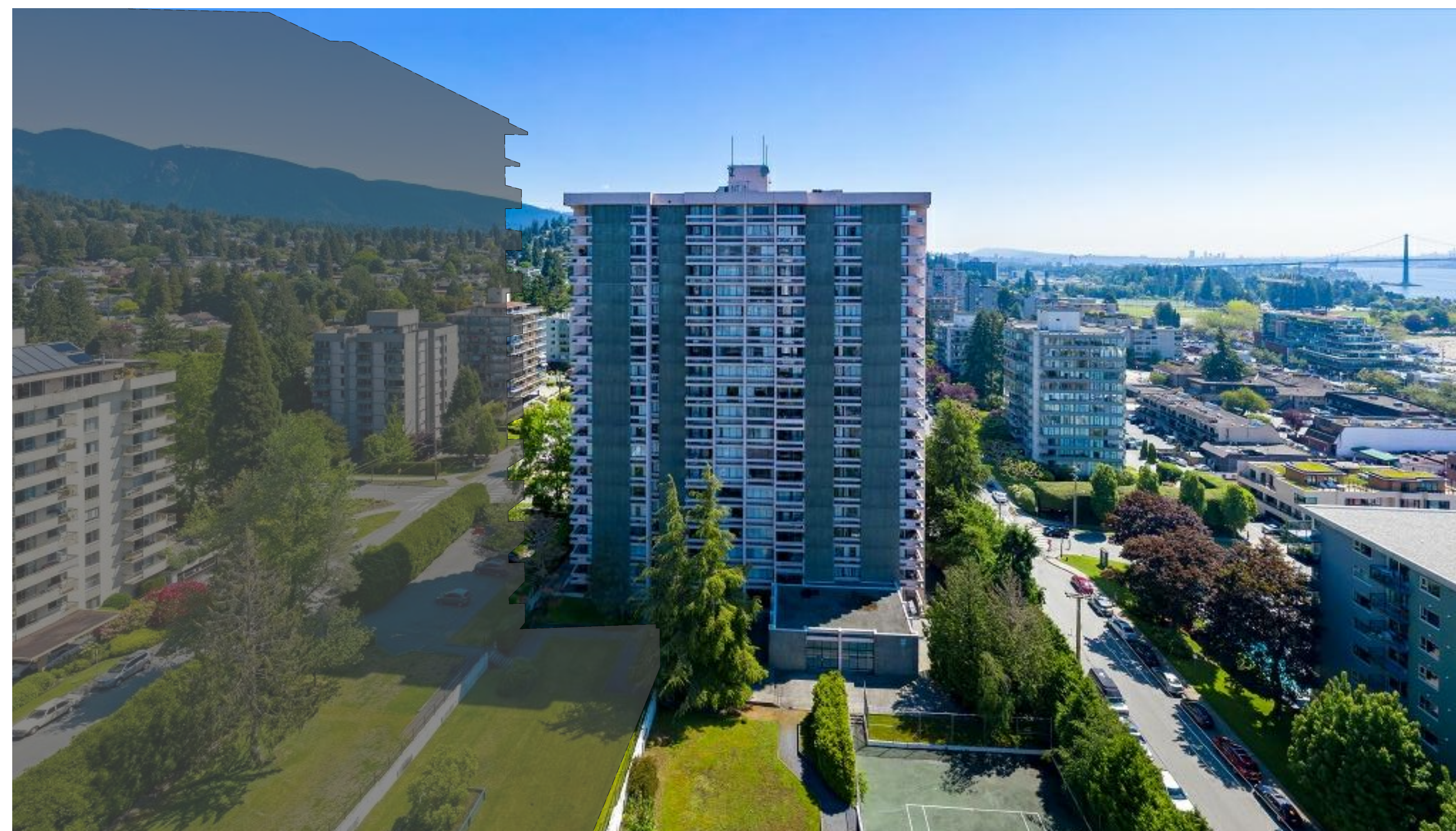
**Site Plan - Camera Location Reference**

Scale:



**1 Camera 7 - View from Building Midheight (Level 9)**

Scale:



**2 Camera 7 - View from Penthouse Level**

Scale:

NO	DATE	REVISION
2	2019-06-07	ISSUED FOR DRG
1	2019-05-02	ISSUED FOR DP APPLICATION

SCALE:

**Butjes Architecture Inc.**

Telephone: (604) 268 3700  
 Facsimile: (604) 268 6081  
 www.butjesarchitecture.com

3707 First Avenue Burnaby, BC  
 Canada V5C 2V6

This material is an instrument of service and remains the exclusive property of Butjes Architecture Incorporated. Reproduction or its use is prohibited without written consent and remains the property of Butjes Architecture Incorporated.

**AMBLESIDE TOWER**  
 1552 ESQUIMALT AVENUE, WEST VANCOUVER B.C.



Wall Financial Corporation  
 1010 Burrard Street  
 Vancouver, British Columbia V6Z 2R9

PROJECT No. : 1502  
 SCALE : AS NOTED  
 PLOT DATE : 2019-07-12

DRAWN BY :  
 CHECKED BY :

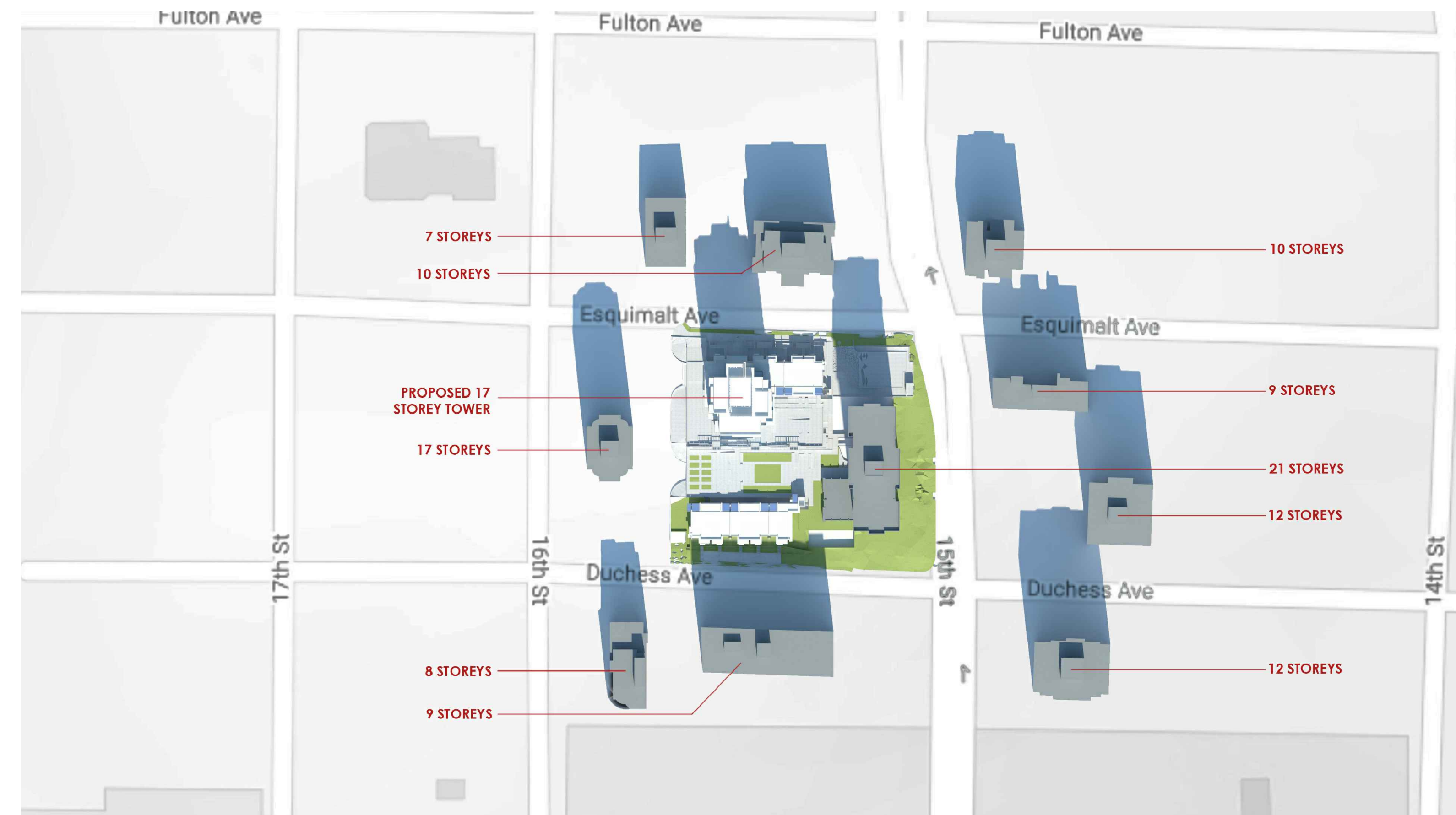
DRAWING #:  
**DPa6.10**

VIEW IMPACT ANALYSIS  
 (CAMERA 7)

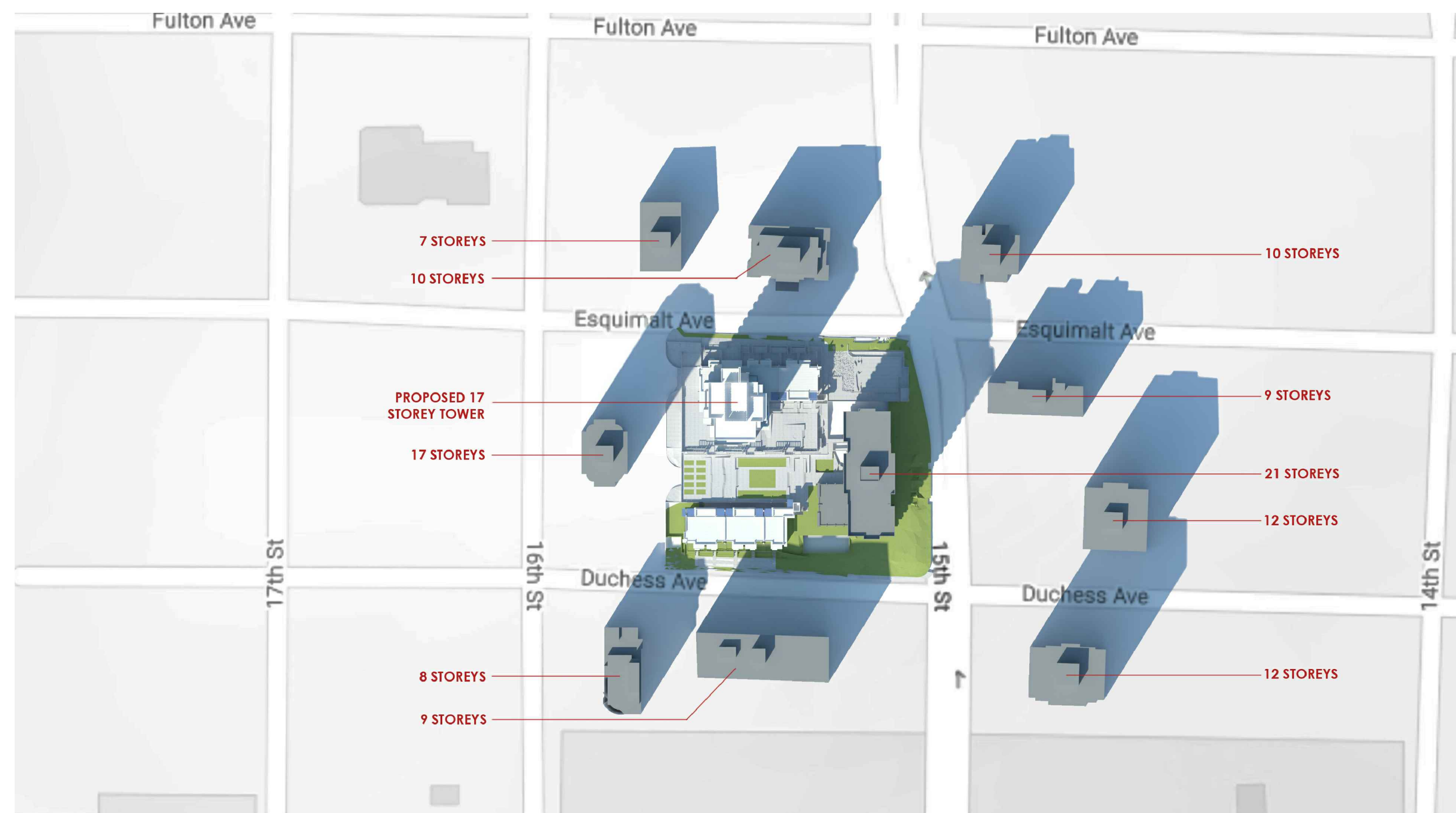




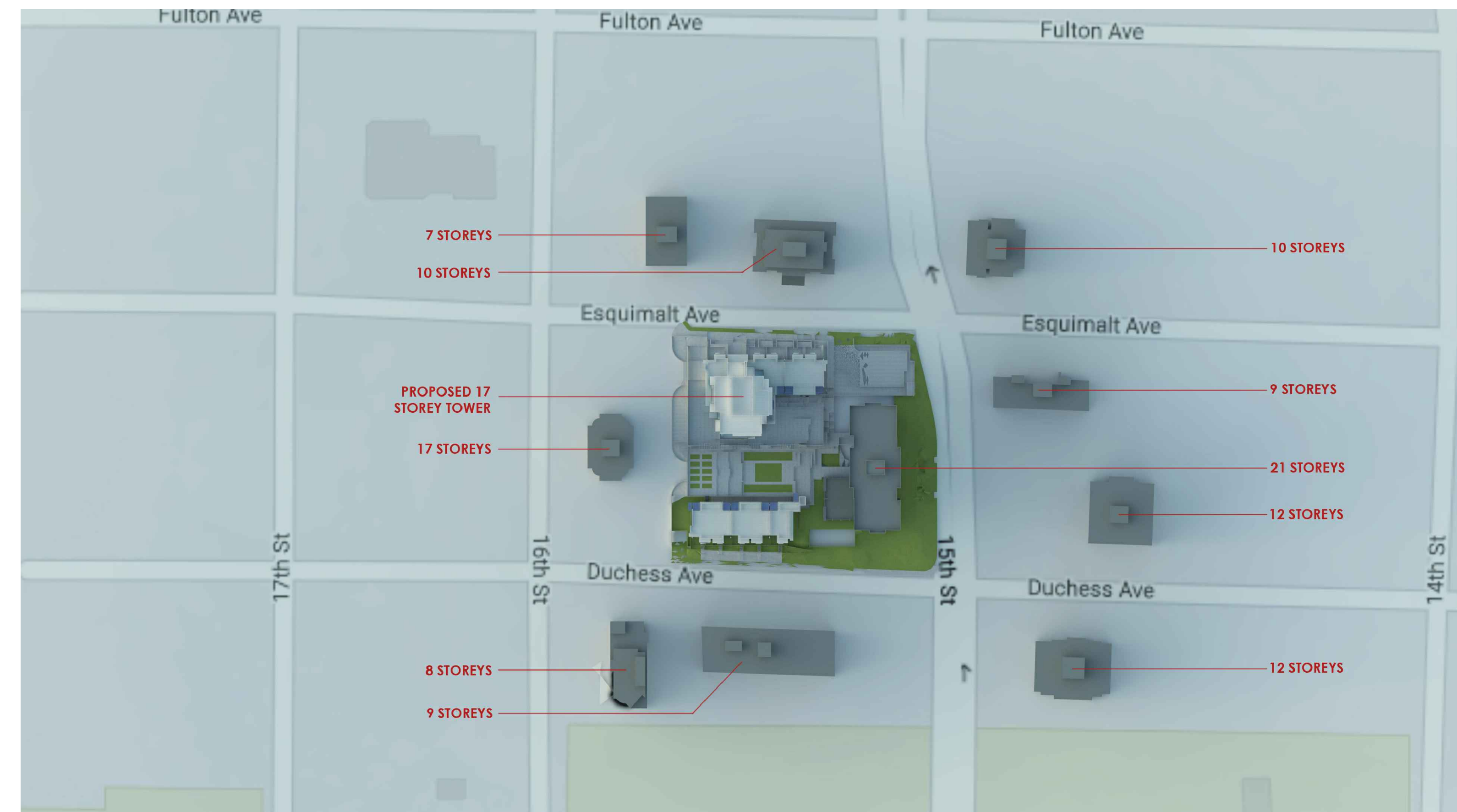
**1** Shadow Study on March/Sept 21 @ 10:00 am  
Scale:



**2** Shadow Study on March/Sept 21 @ 12:00 noon  
Scale:

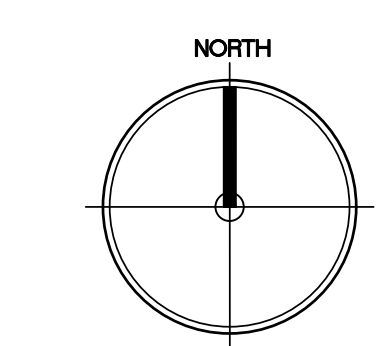


**3** Shadow Study on March/Sept 21 @ 2:00 pm  
Scale:



**4** Shadow Study on March/Sept 21 @ 6:00 pm  
Scale:

NO	DATE	REVISION
2	2019-06-07	ISSUED FOR DRC
1	2019-05-02	ISSUED FOR DP APPLICATION



SCALE:

**Buttjes Architecture Inc.**

Telephone: (604) 268 3700  
Facsimile: (604) 268 6081  
www.buttjesarchitecture.com  
3707 First Avenue Burnaby, BC  
Canada V5C 2V6

This material is an instrument of service and remains the exclusive property of Buttjes Architecture Incorporated. Reproduction or use in any form without written consent and name of Buttjes Architecture Incorporated.

**AMBLESIDE TOWER**  
1552 ESQUIMALT AVENUE, WEST VANCOUVER B.C.



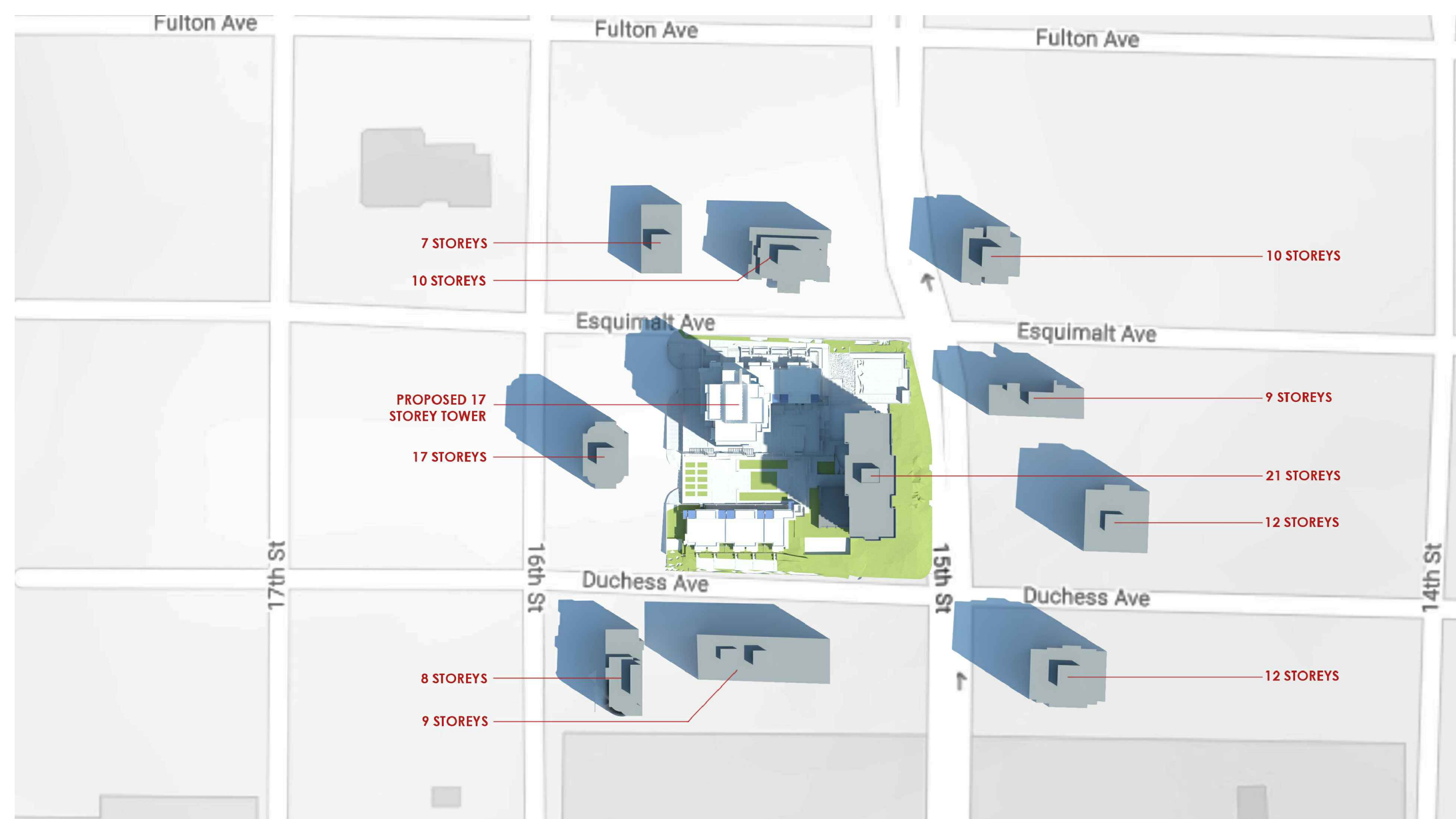
Wall Financial Corporation  
1010 Burrard Street  
Vancouver, British Columbia V6Z 2R9

PROJECT No. : 1502  
SCALE : AS NOTED  
PLOT DATE : 2019-07-12  
DRAWN BY :  
CHECKED BY :

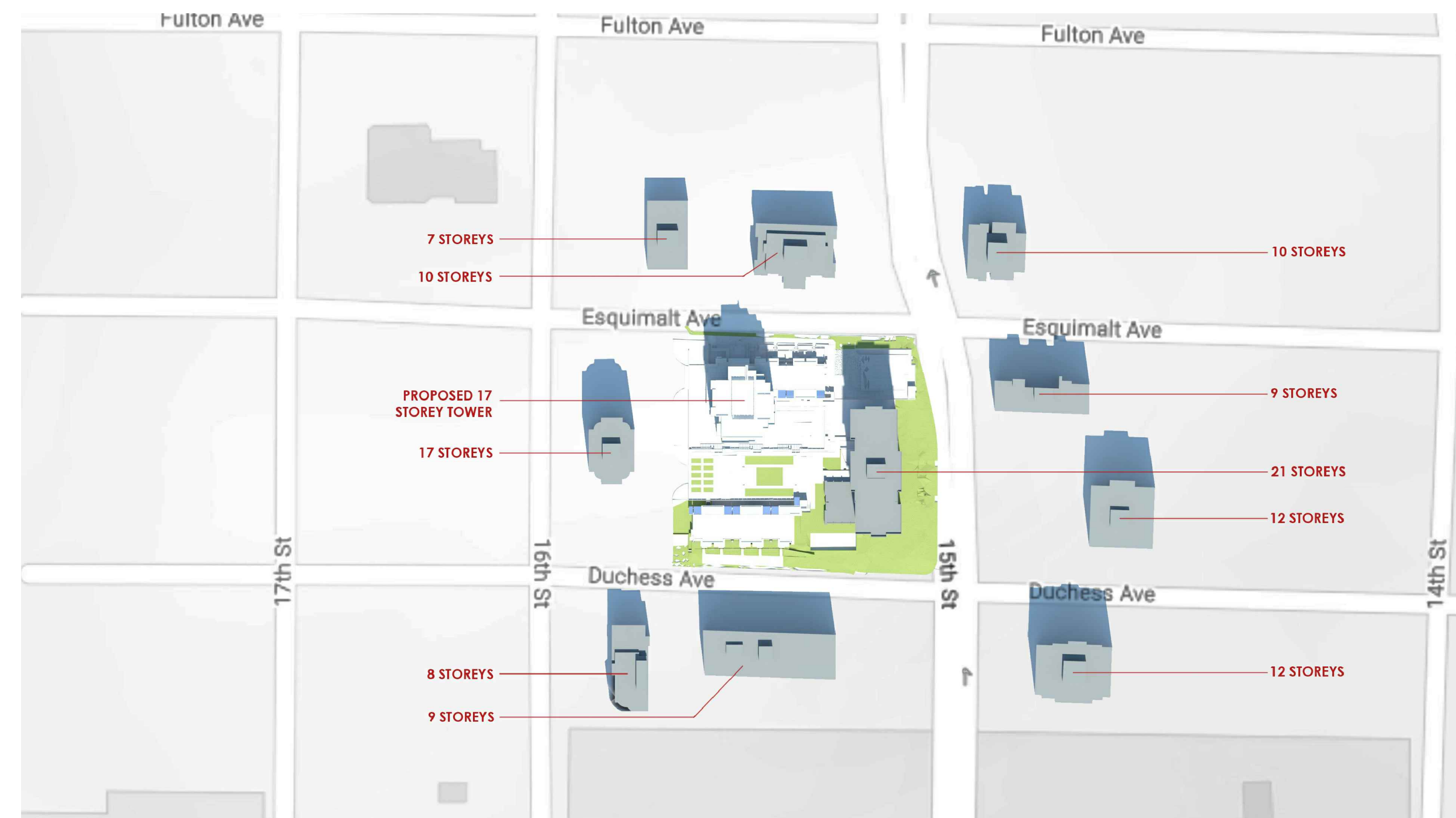
DRAWING #:

**DPa6.11**

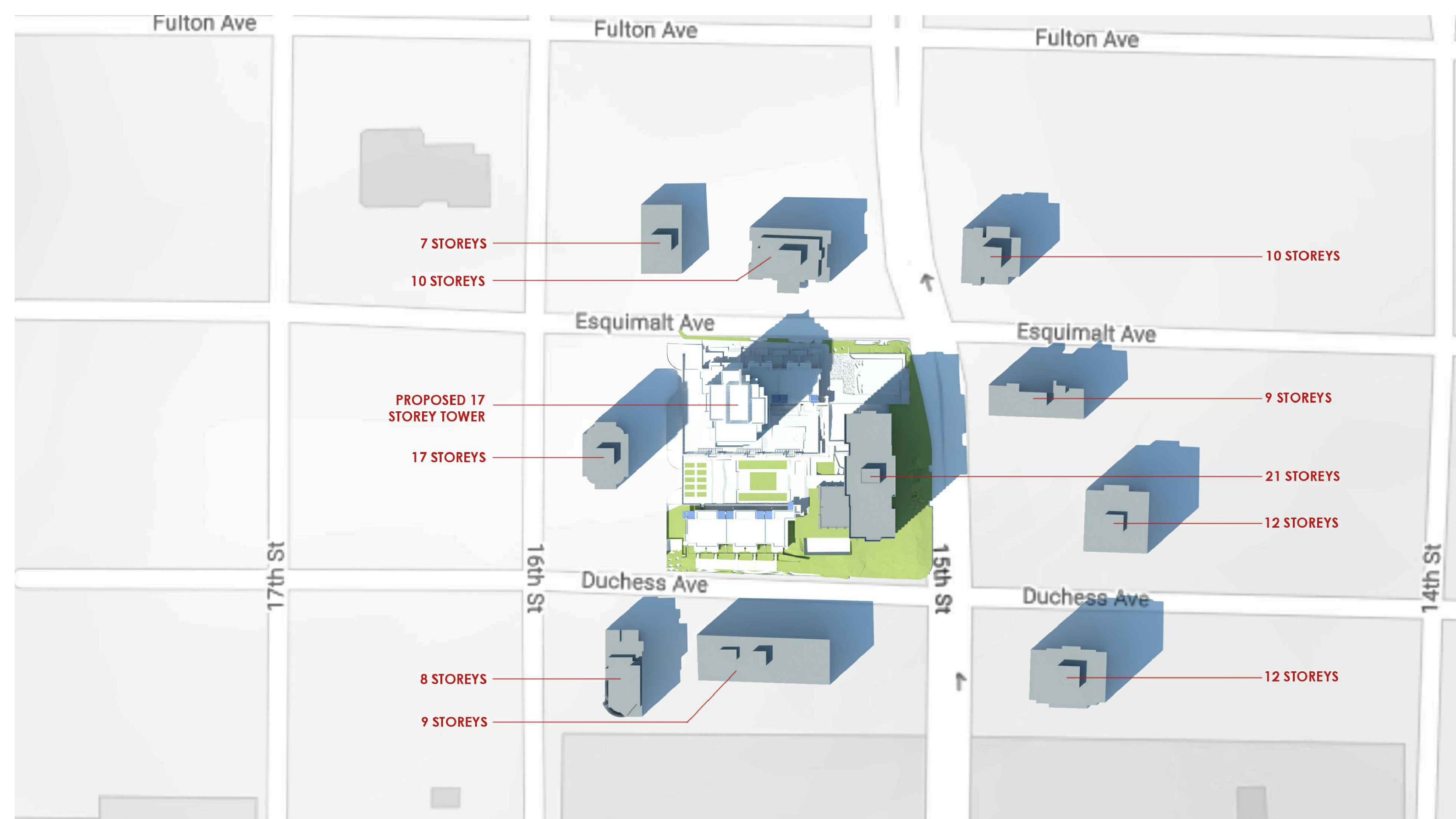
SHADOW ANALYSIS  
(March / September 21)



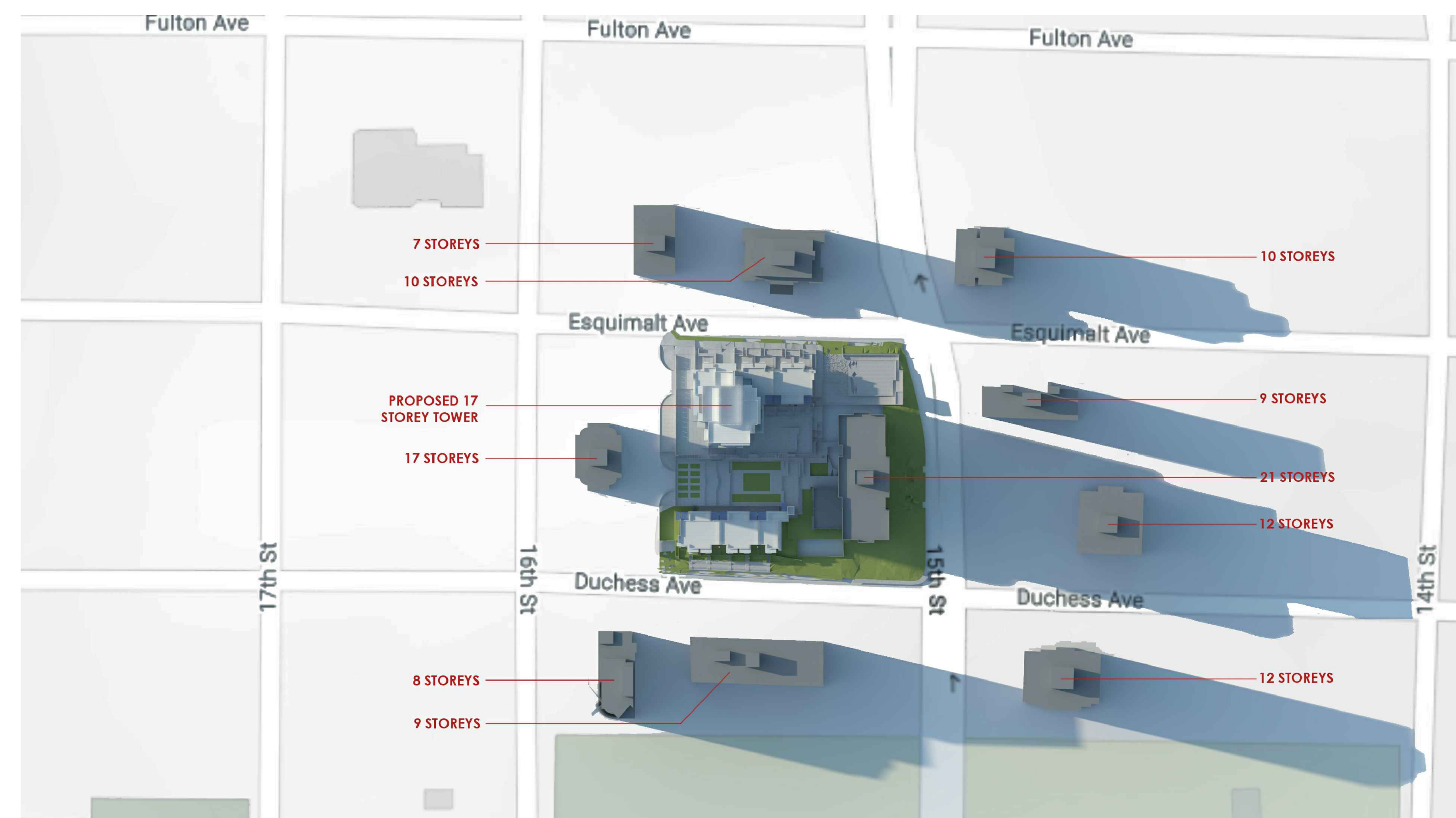
**1** Shadow Study on June 21 @ 10:00 am  
Scale:



**2** Shadow Study on June 21 @ 12:00 noon  
Scale:

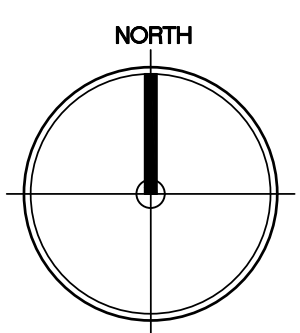


**3** Shadow Study on June 21 @ 2:00 pm  
Scale:



**4** Shadow Study on June 21 @ 6:00 pm  
Scale:

NO	DATE	REVISION
2	2019-06-07	ISSUED FOR DRC
1	2019-05-02	ISSUED FOR DP APPLICATION



SCALE:

**Buttjes Architecture Inc.**

Telephone: (604) 298 3700  
Facsimile: (604) 298 6081  
www.buttjesarchitecture.com  
3707 First Avenue Burnaby, BC  
Canada V5C 2V6

This material is an instrument of service and remains the exclusive property of Buttjes Architecture Incorporated. Reproduction or use in any form without written consent and return of this page is prohibited.

**AMBLESIDE TOWER**  
1552 ESQUIMALT AVENUE, WEST VANCOUVER B.C.



Wall Financial Corporation  
1010 Burrard Street  
Vancouver, British Columbia V6Z 2R9

PROJECT No. : 1502  
SCALE : AS NOTED  
PLOT DATE : 2019-07-12  
DRAWN BY :  
CHECKED BY :

DRAWING #:

**DPa6.12**

SHADOW ANALYSIS  
(June 21)



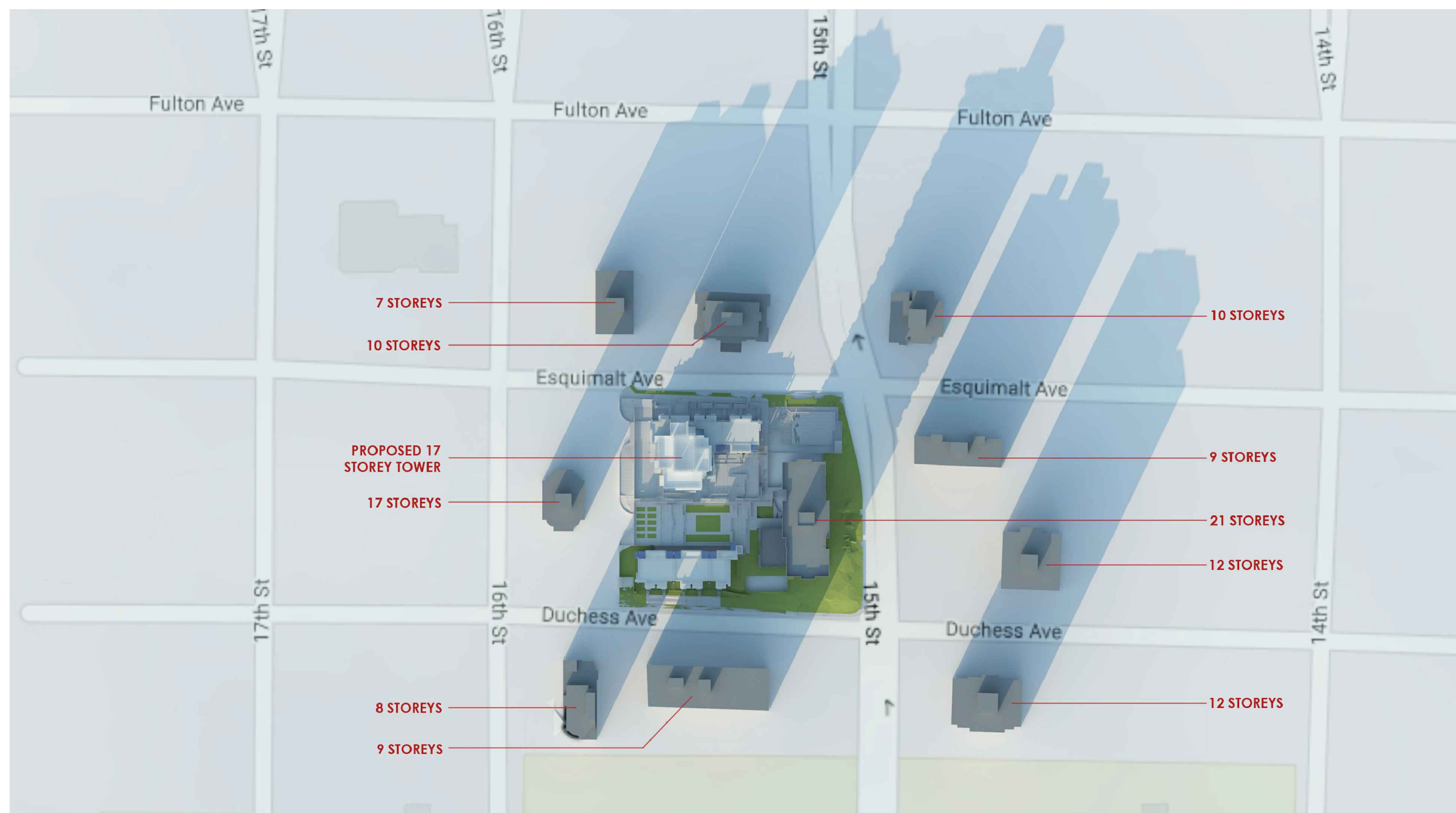
**1** Shadow Study on December 21 @ 10:00 am

Scale:



**2** Shadow Study on December 21 @ 12:00 noon

Scale:



**3** Shadow Study on December 21 @ 2:00 pm

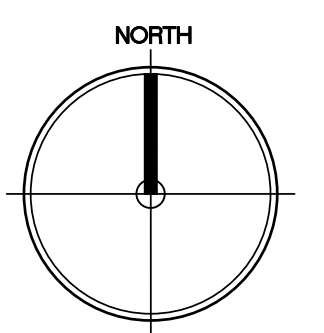
Scale:



**4** Shadow Study on December 21 @ 6:00 pm

Scale:

NO	DATE	REVISION
2	2019-06-07	ISSUED FOR DRC
1	2019-05-02	ISSUED FOR DP APPLICATION
NO	17-11-02	REVISION



SCALE:

**Butjes Architecture Inc.**

Telephone: (604) 288 3700  
 Facsimile: (604) 288 6081  
 www.butjesarchitecture.com  
 3707 First Avenue Burnaby, BC  
 Canada V5C 2V6

This material is an instrument of service and remains the exclusive property of Butjes Architecture Incorporated. Reproduction or use in any form without written consent and name of Butjes Architecture Incorporated.

**AMBLESIDE TOWER**  
 1552 ESQUIMALT AVENUE, WEST VANCOUVER B.C.



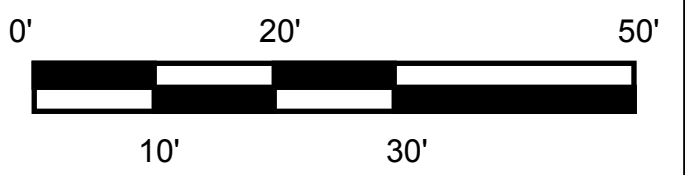
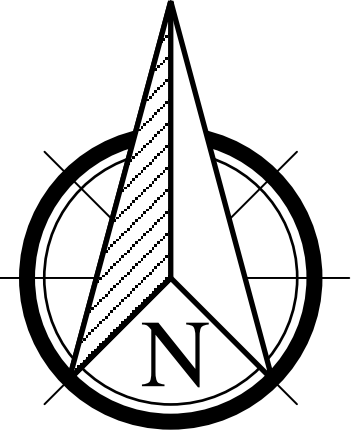
Wall Financial Corporation  
 1010 Burrard Street  
 Vancouver, British Columbia V6Z 2R6

PROJECT No. : 1502  
 SCALE : AS NOTED  
 PLOT DATE : 2019-07-12  
 DRAWN BY :  
 CHECKED BY :

DRAWING #:  
**DPa6.13**

SHADOW ANALYSIS  
 (December 21)

Reference: D:\Projects\1502 - Ambleside Tower\1502\_Proposal\_Images.dwg - DPa6.13  
 Last Saved: Jul 09/19 3:36pm - Plotted: Jul 12/19 - 1:40pm



DATE	ISSUED
2019-06-07	Issued for DRC

REV.	DATE	DESCRIPTION
------	------	-------------

**AMBLESIDE INFILL**

**ESQUIMALT AVENUE,  
WEST VANCOUVER  
WALL FINANCIAL CORPORATION**

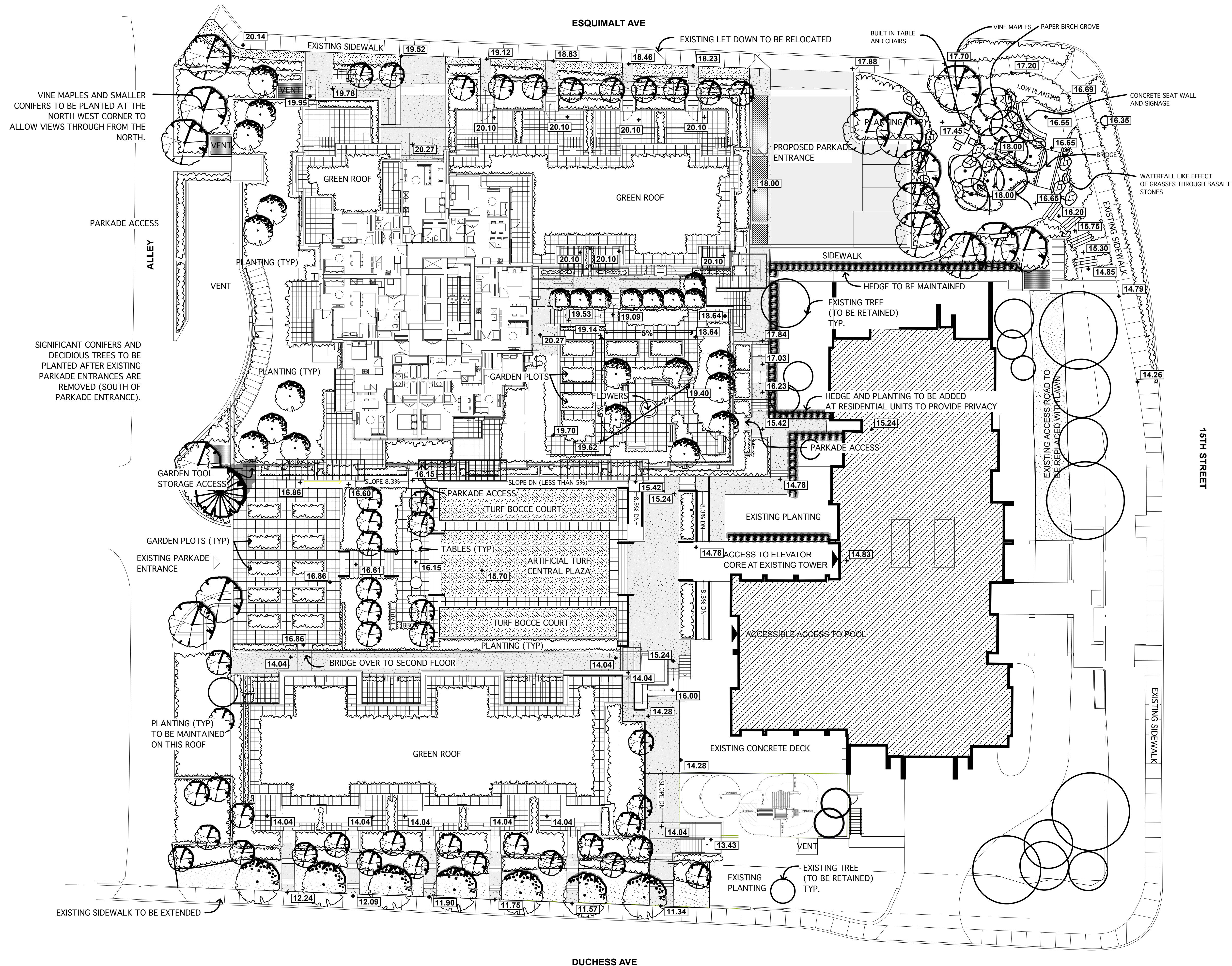
**Vaughan**  
Landscape Planning  
and Design  
1406 Clyde Ave.,  
West Vancouver, B.C.  
Canada V7T 1G1  
PH: 922-1885  
FAX: 922-5485  
office@vaughanplanning.com

DESIGNED	MCV
SCALE	1/16" = 1'-0"
DATE	July 14, 2016

TITLE  
**LANDSCAPE PLAN**

DRAWING NO.	REV
<b>L7.01</b>	

THIS REVISION SUPERCEDES DRAWINGS  
BEARING PREVIOUS REVISION NUMBER



VINE MAPLES AND SMALLER CONIFERS TO BE PLANTED AT THE NORTH WEST CORNER TO ALLOW VIEWS THROUGH FROM THE NORTH.

SIGNIFICANT CONIFERS AND DECIDUOUS TREES TO BE PLANTED AFTER EXISTING PARKADE ENTRANCES ARE REMOVED (SOUTH OF PARKADE ENTRANCE).

PLANTING (TYP) TO BE MAINTAINED ON THIS ROOF

EXISTING SIDEWALK TO BE EXTENDED

15TH STREET

ESQUIMALT AVE

DUCHESS AVE