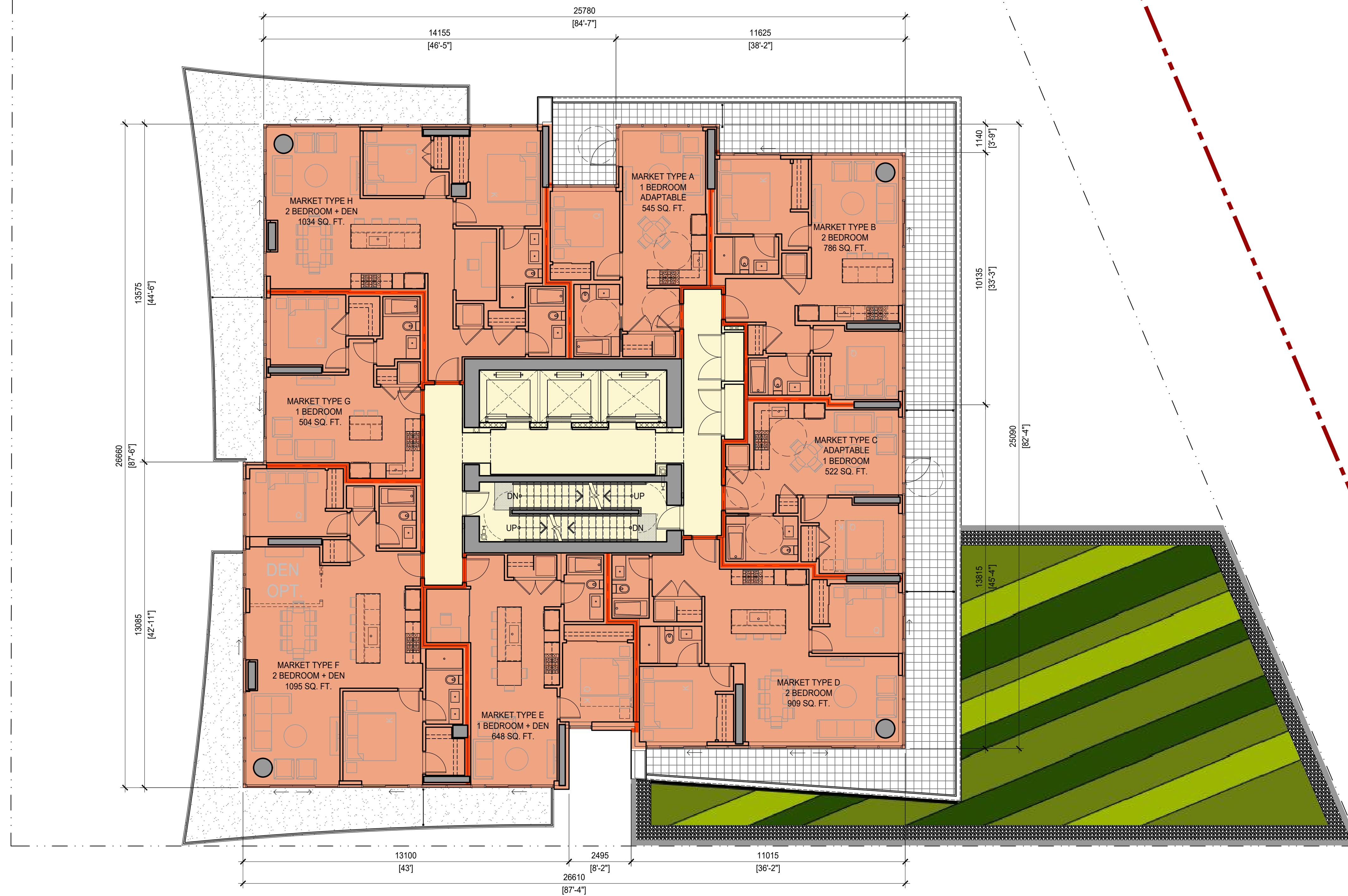


- LEGEND**
- COMMON
  - RESIDENTIAL
  - AMENITY

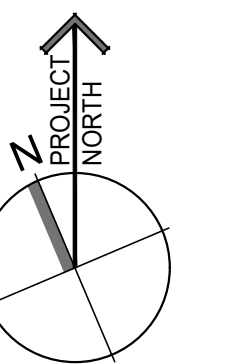
**OVERALL L3 FLOOR PLAN - A206**  
**303 MARINE DRIVE - WEST VANCOUVER**  
 1"=20'-0" / 1:240 2020.02.20





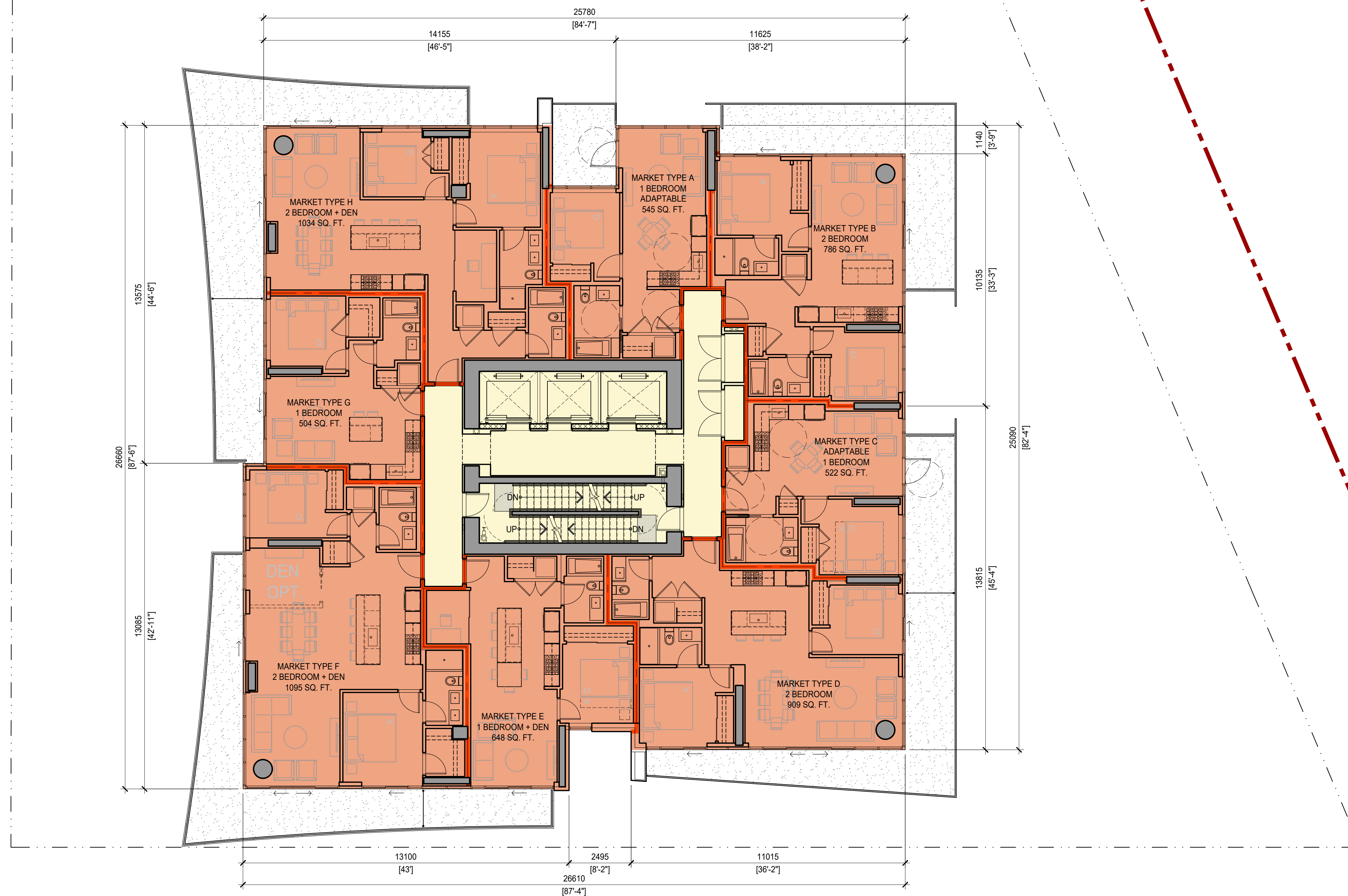
FLOOR PLATE  
AREA: 7081 SQ. FT.

LEGEND  
 COMMON  
 RENTAL



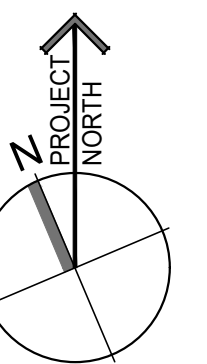
**LEVEL 3 RENTAL FLOOR PLAN - A207**  
**303 MARINE DRIVE - WEST VANCOUVER**

1/8"=1'-0" / 1:96 2020.02.20



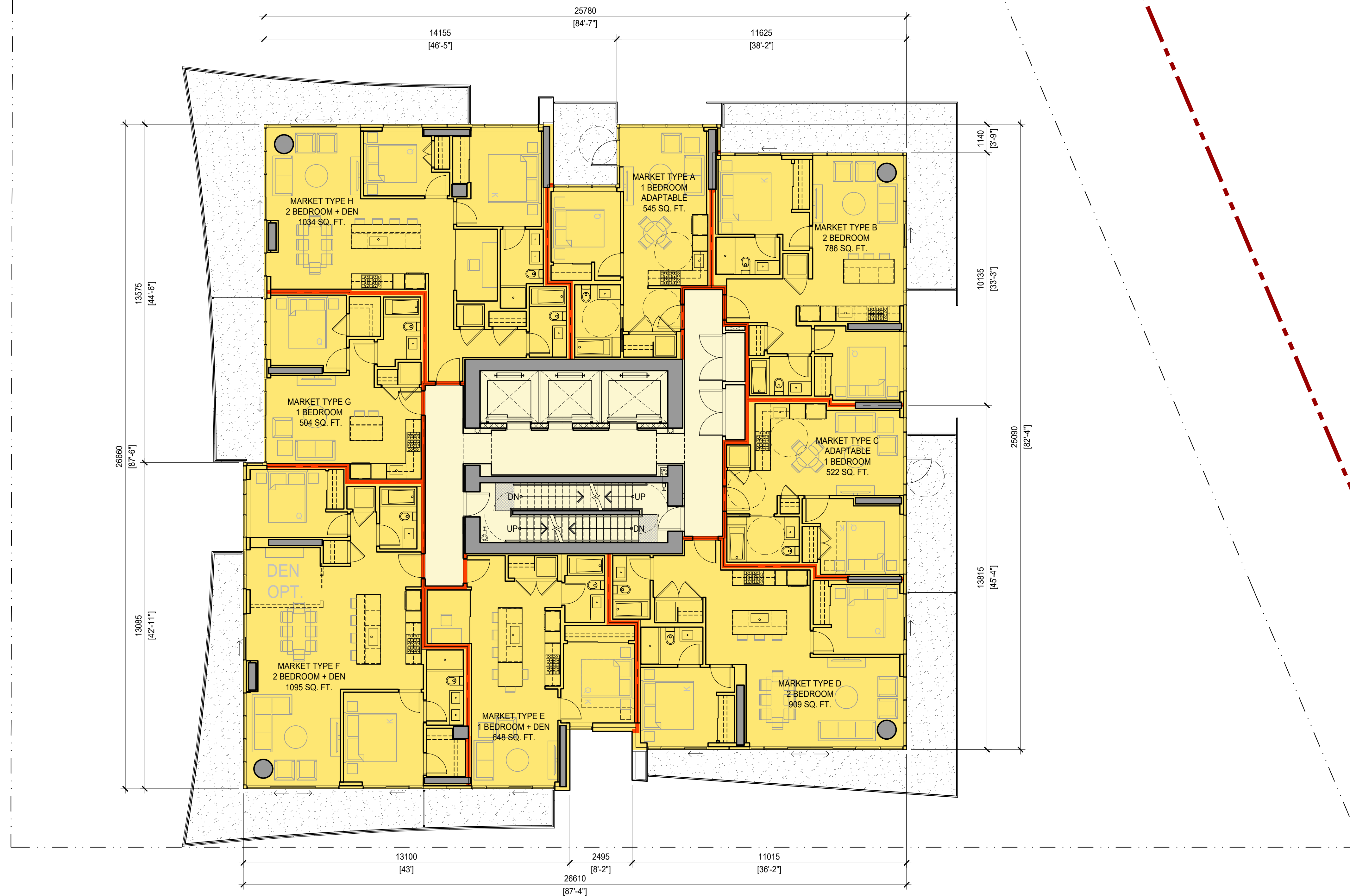
FLOOR PLATE  
AREA: 7081 SQ. FT.

LEGEND  
 COMMON  
 RENTAL



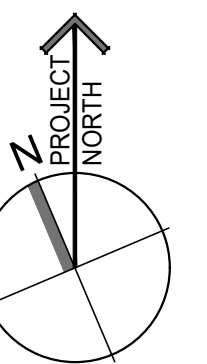
**LEVEL 4-8 RENTAL FLOOR PLAN - A208**  
**303 MARINE DRIVE - WEST VANCOUVER**

1/8"=1'-0" / 1:96 2020.02.20



FLOOR PLATE  
AREA: 7081 SQ. FT.

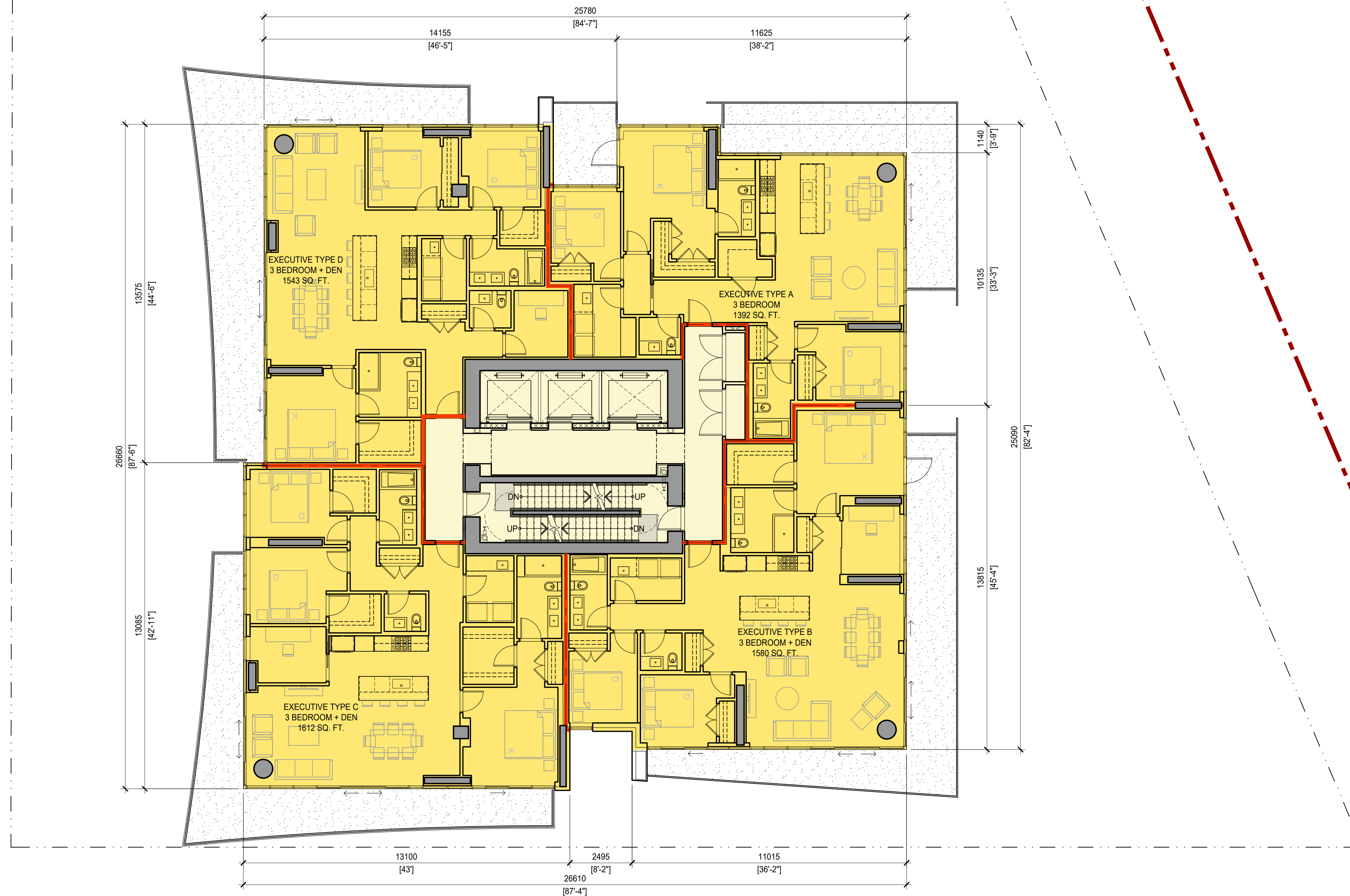
- LEGEND
- COMMON
  - RESIDENTIAL



LEVEL 9-22 TYPICAL MARKET FLOOR PLAN - A209

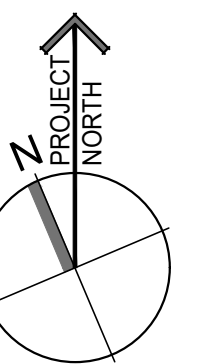
303 MARINE DRIVE - WEST VANCOUVER

1/8"=1'-0" / 1:96 2020.02.20



FLOOR PLATE  
AREA: 7081 SQ. FT.

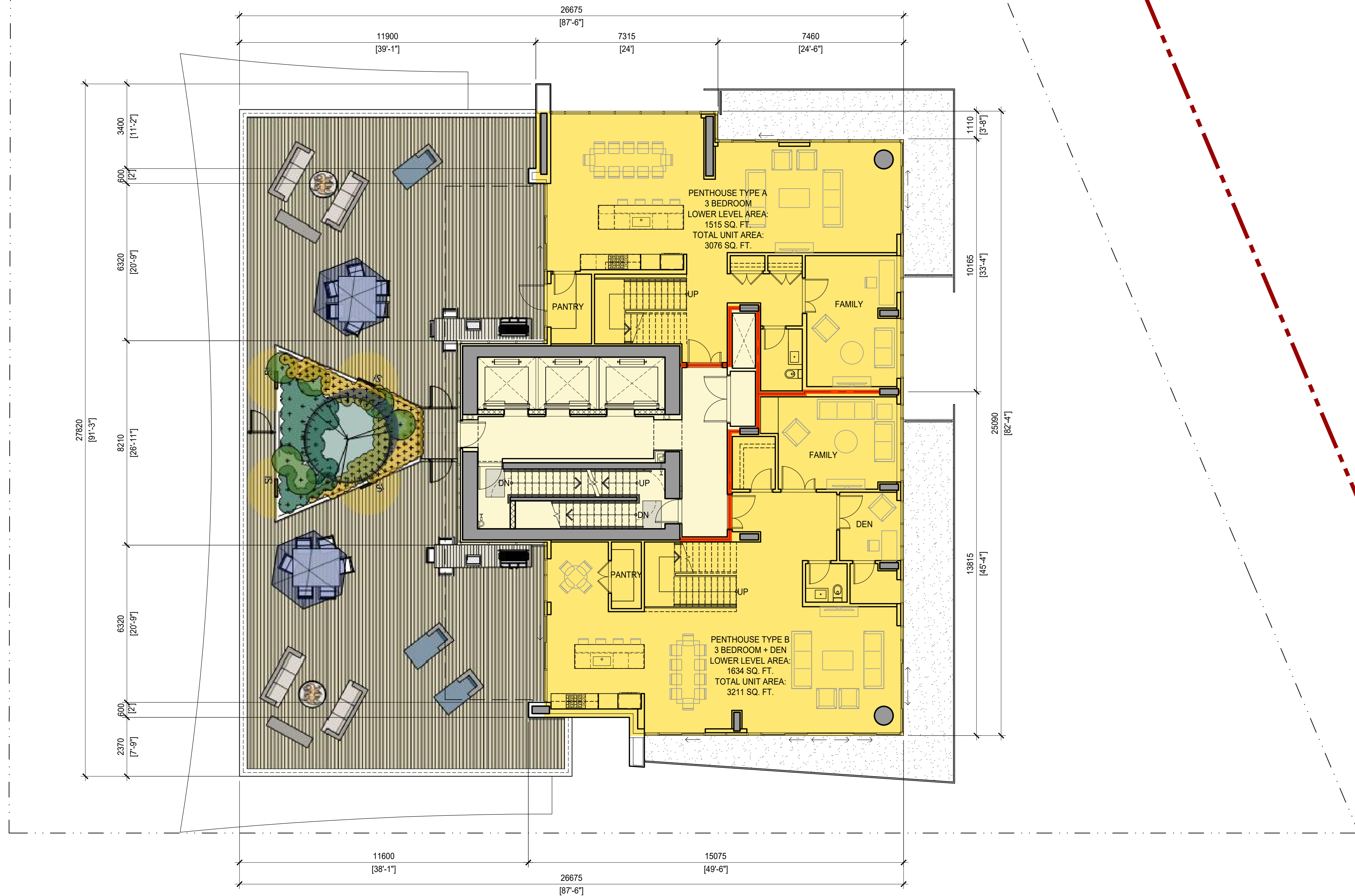
LEGEND  
 COMMON  
 RESIDENTIAL



LEVEL 23-24 EXECUTIVE FLOOR PLAN - A210

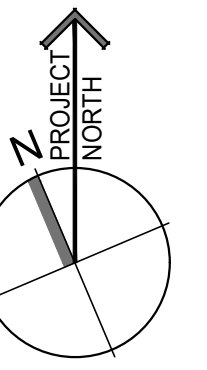
303 MARINE DRIVE - WEST VANCOUVER

1/8"=1'-0" / 1:96 2020.02.20



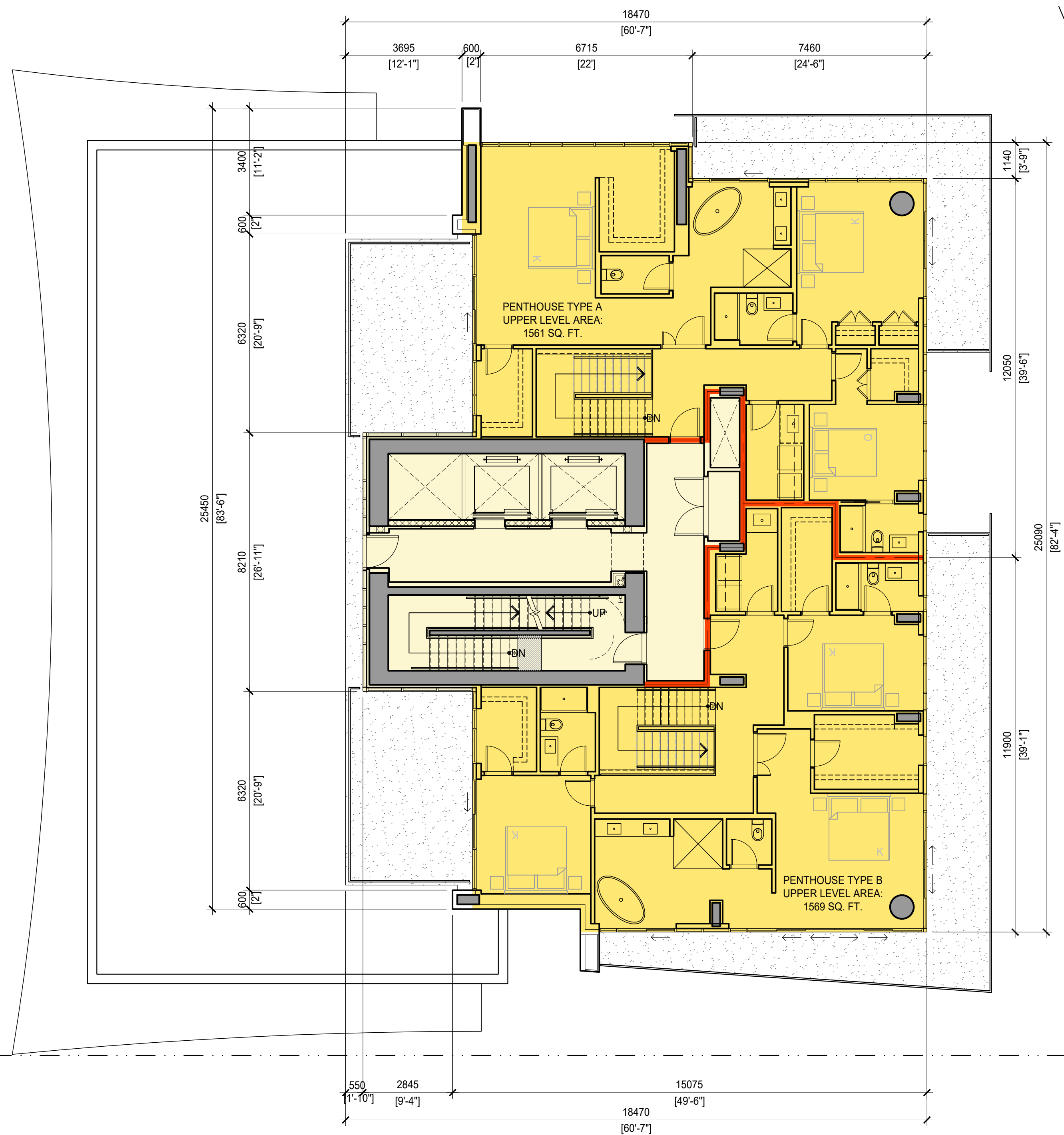
FLOOR PLATE  
AREA: 4079 SQ. FT.

LEGEND  
 COMMON  
 RESIDENTIAL



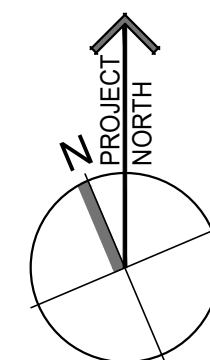
**LEVEL 25 PENTHOUSE FLOOR PLAN - A211**  
**303 MARINE DRIVE - WEST VANCOUVER**

1/8"=1'-0" / 1:96 2020.03.11



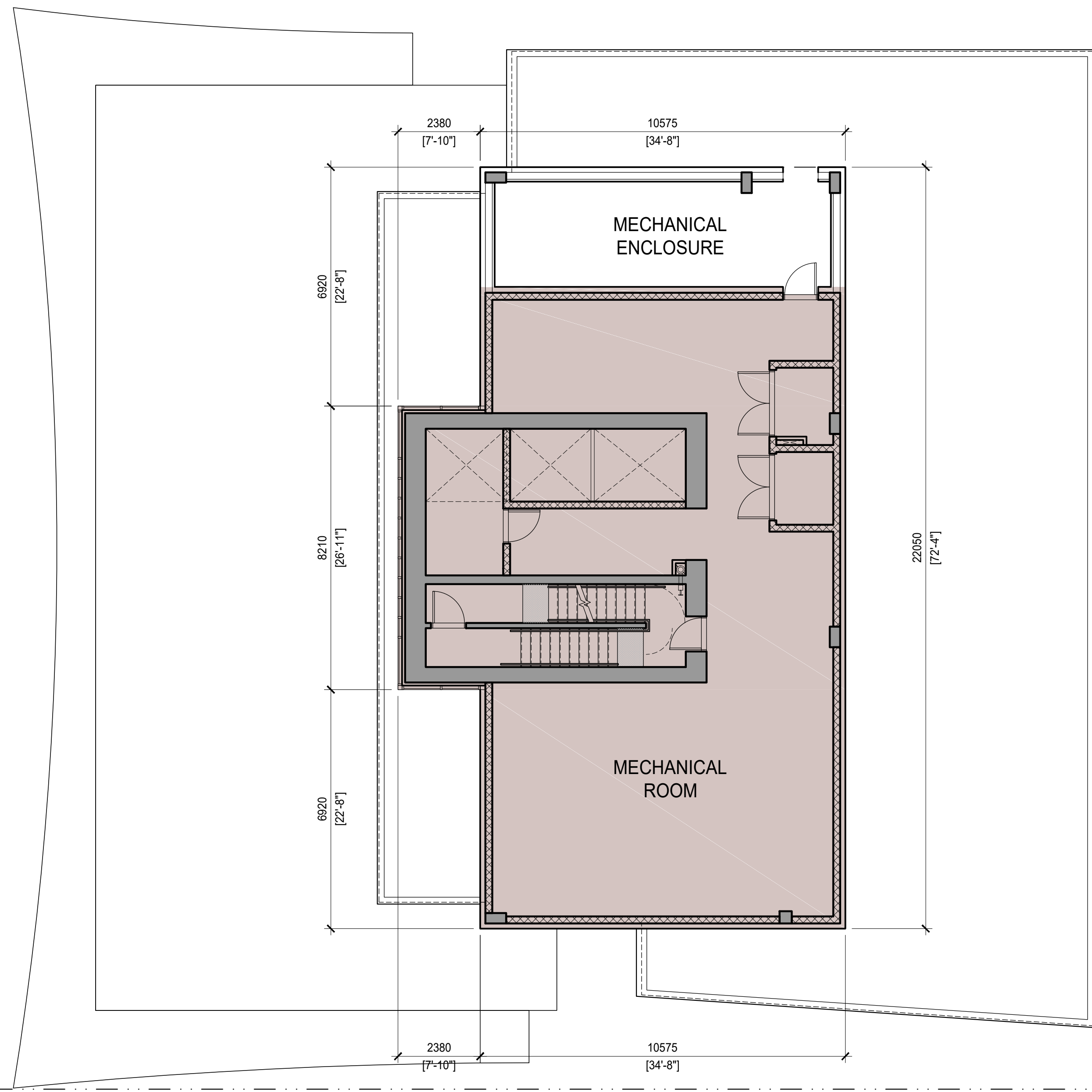
**FLOOR PLATE  
AREA: 4079 SQ. FT.**

- LEGEND**
- COMMON
  - RESIDENTIAL

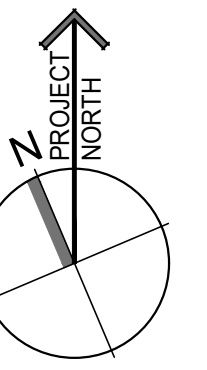


**LEVEL 26 PENTHOUSE FLOOR PLAN - A212  
303 MARINE DRIVE - WEST VANCOUVER**

1/8"=1'-0" / 1:96 2020.03.11



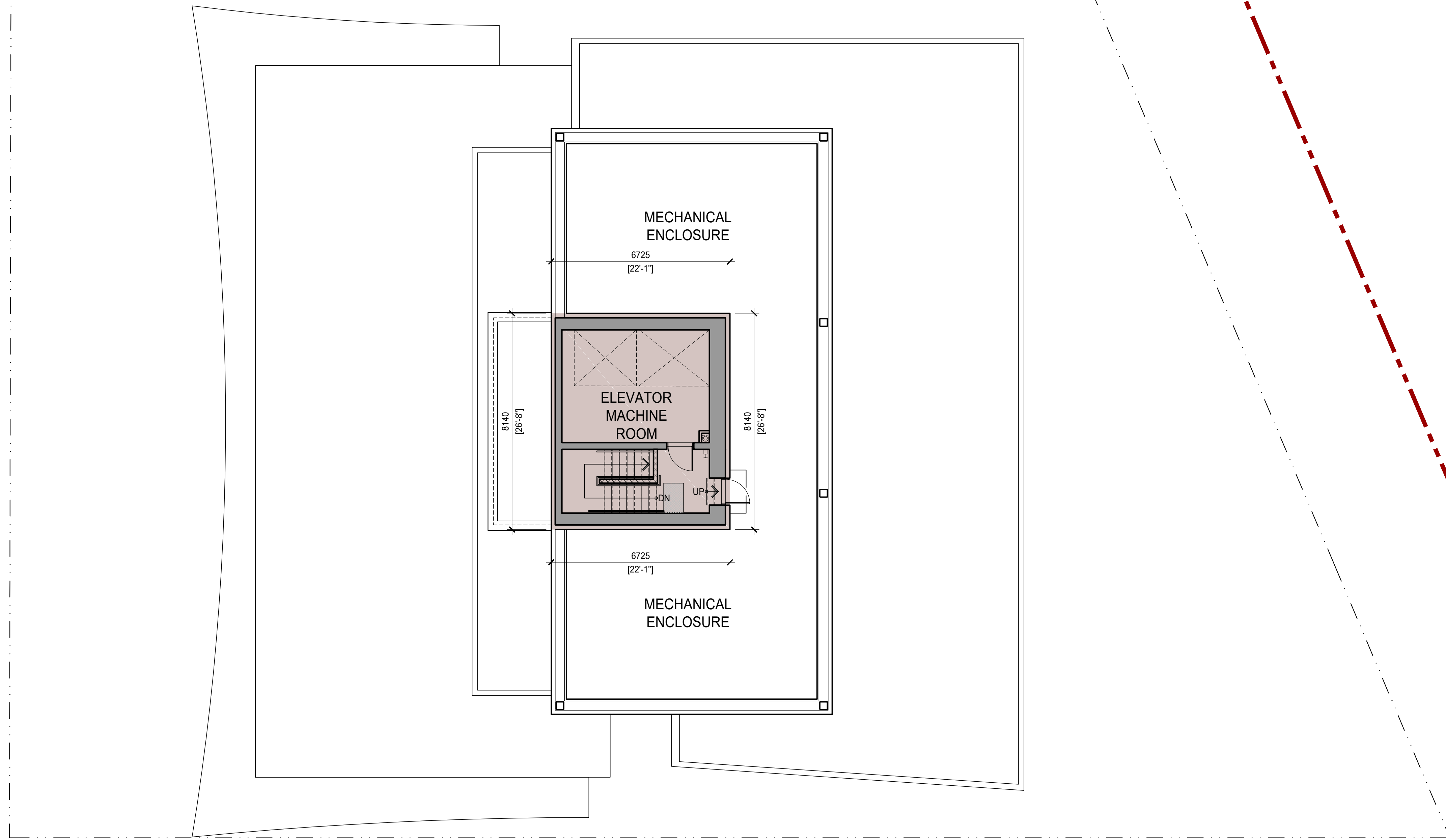
FLOOR PLATE  
 AREA: 2325 SQ. FT.



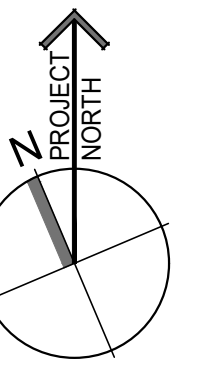
**MECHANICAL ROOM FLOOR PLAN - A213**  
**303 MARINE DRIVE - WEST VANCOUVER**

1/8"=1'-0" / 1:96 2020.02.20





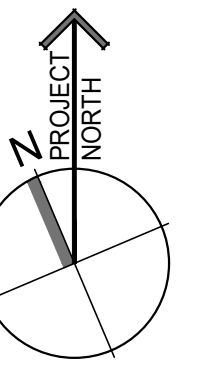
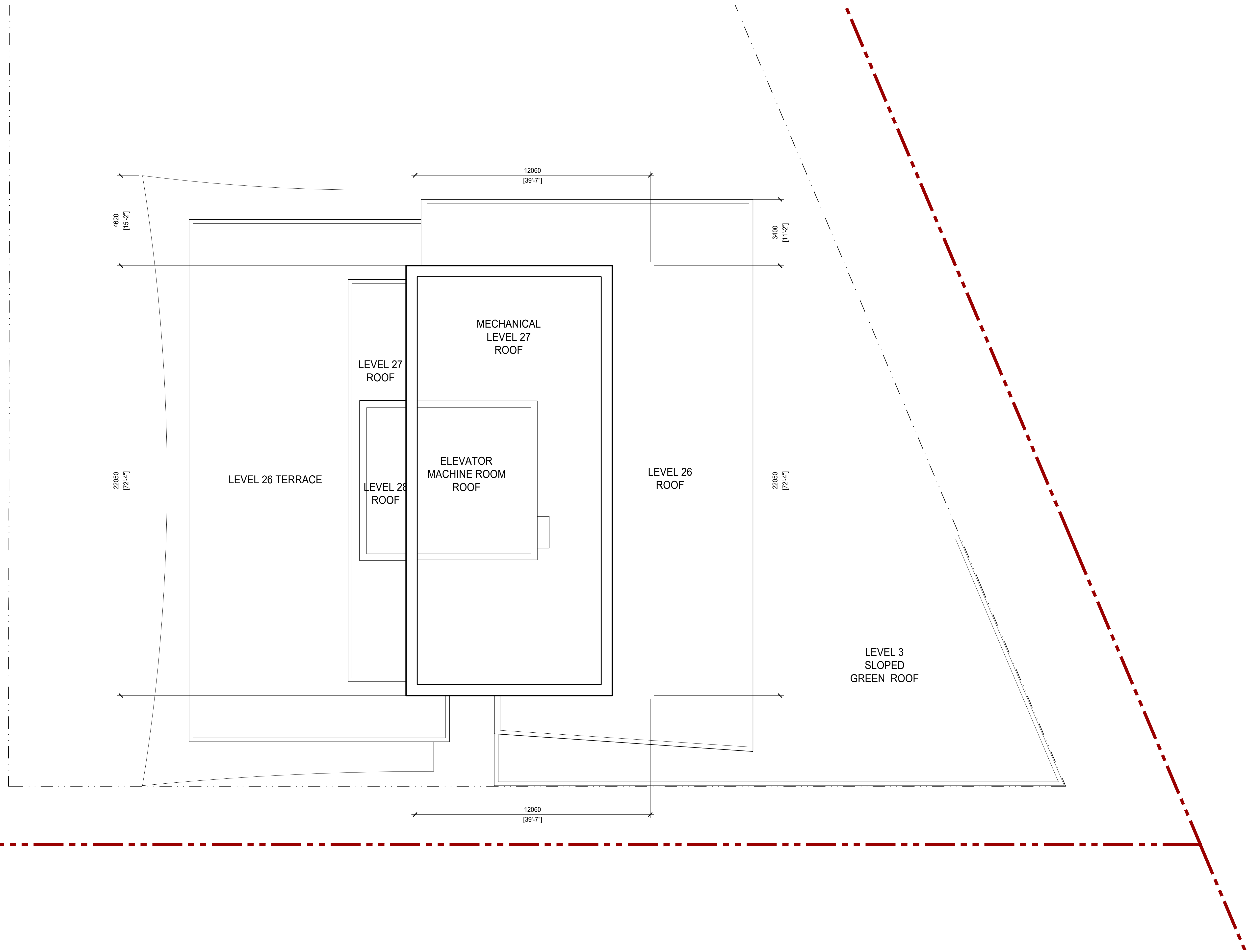
FLOOR PLATE  
 AREA: 586 SQ. FT.



**ELEVATOR MACHINE ROOM FLOOR PLAN - A214**

**303 MARINE DRIVE - WEST VANCOUVER**

1/8"=1'-0" / 1:96 2020.02.20



**ROOF PLAN - A215**

**303 MARINE DRIVE - WEST VANCOUVER**

1/8"=1'-0" / 1:96 2020.02.20



**TOWNHOUSES L1 FLOOR PLAN - A21**  
**303 MARINE DRIVE - WEST VANCOUVER**  
 1/8"=1'-0" / 1:96 2020.02.20



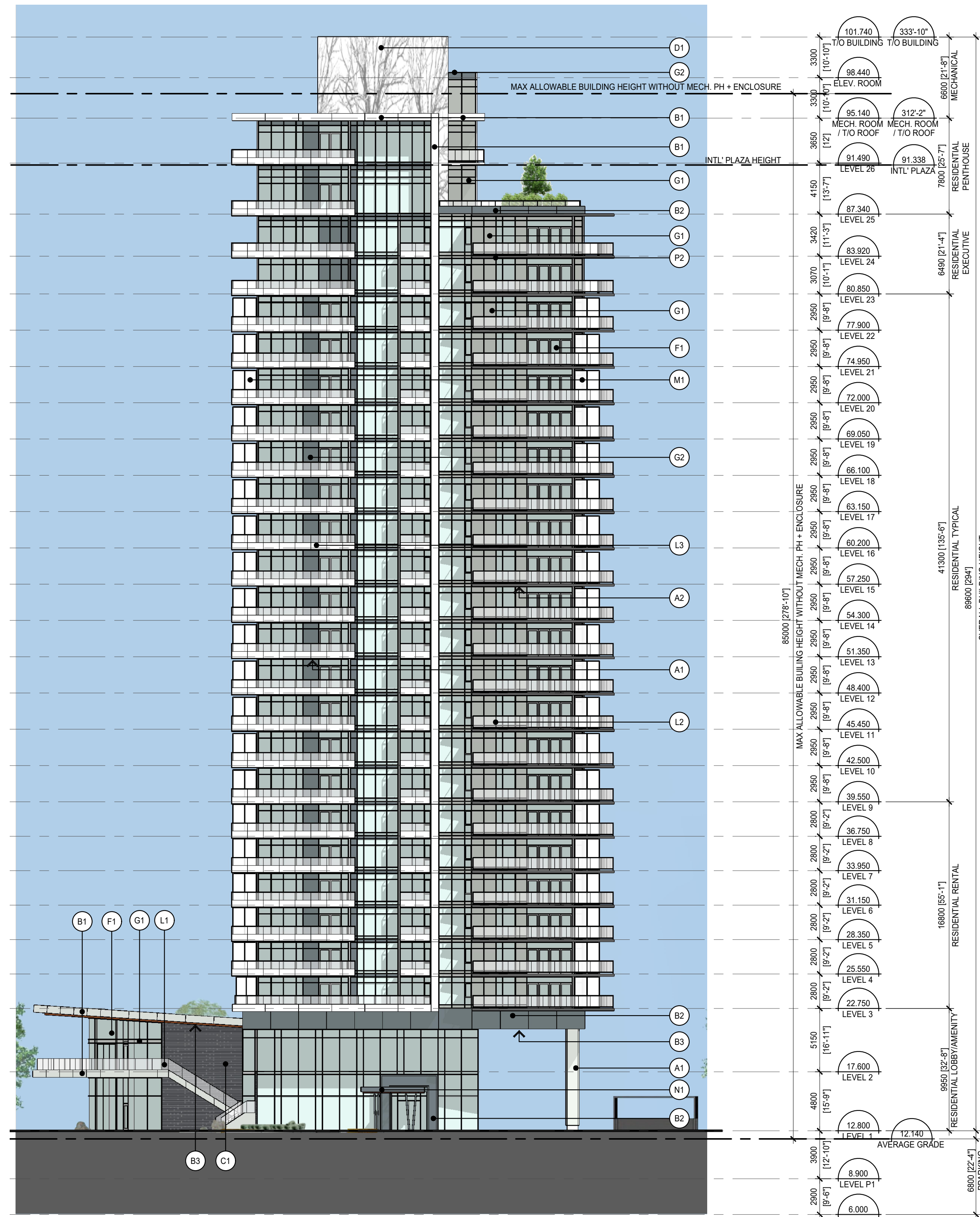
- LEGEND**
- COMMON
  - RESIDENTIAL
  - AMENITY

**TOWNHOUSES L2 FLOOR PLAN - A21**  
**303 MARINE DRIVE - WEST VANCOUVER**  
 1/8"=1'-0" / 1:96 2020.02.20

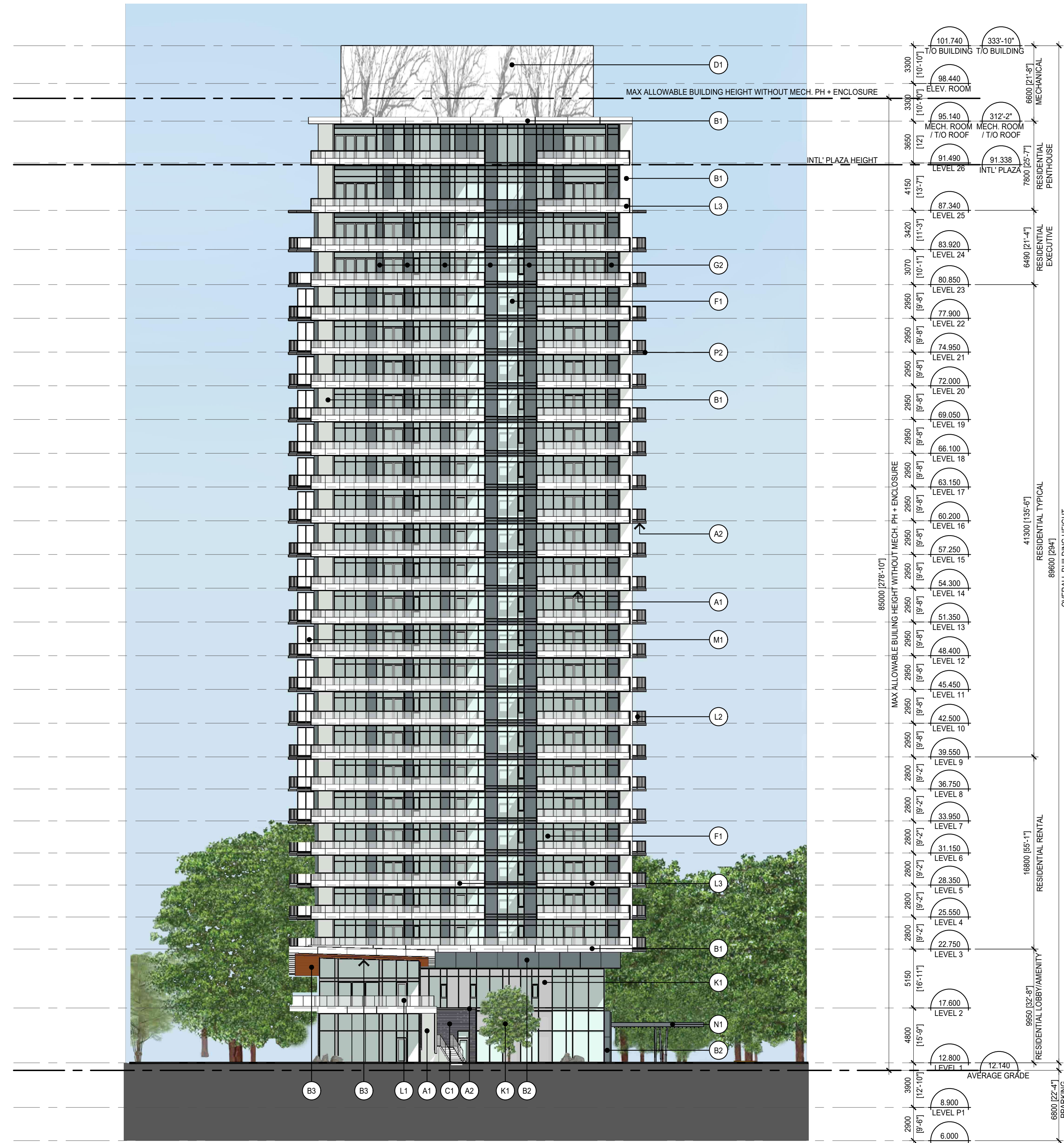


- LEGEND
- COMMON
  - RESIDENTIAL
  - AMENITY

**TOWNHOUSES ROOF PLAN - A218**  
**303 MARINE DRIVE - WEST VANCOUVER**  
 1/8"=1'-0" / 1:96 2020.02.20



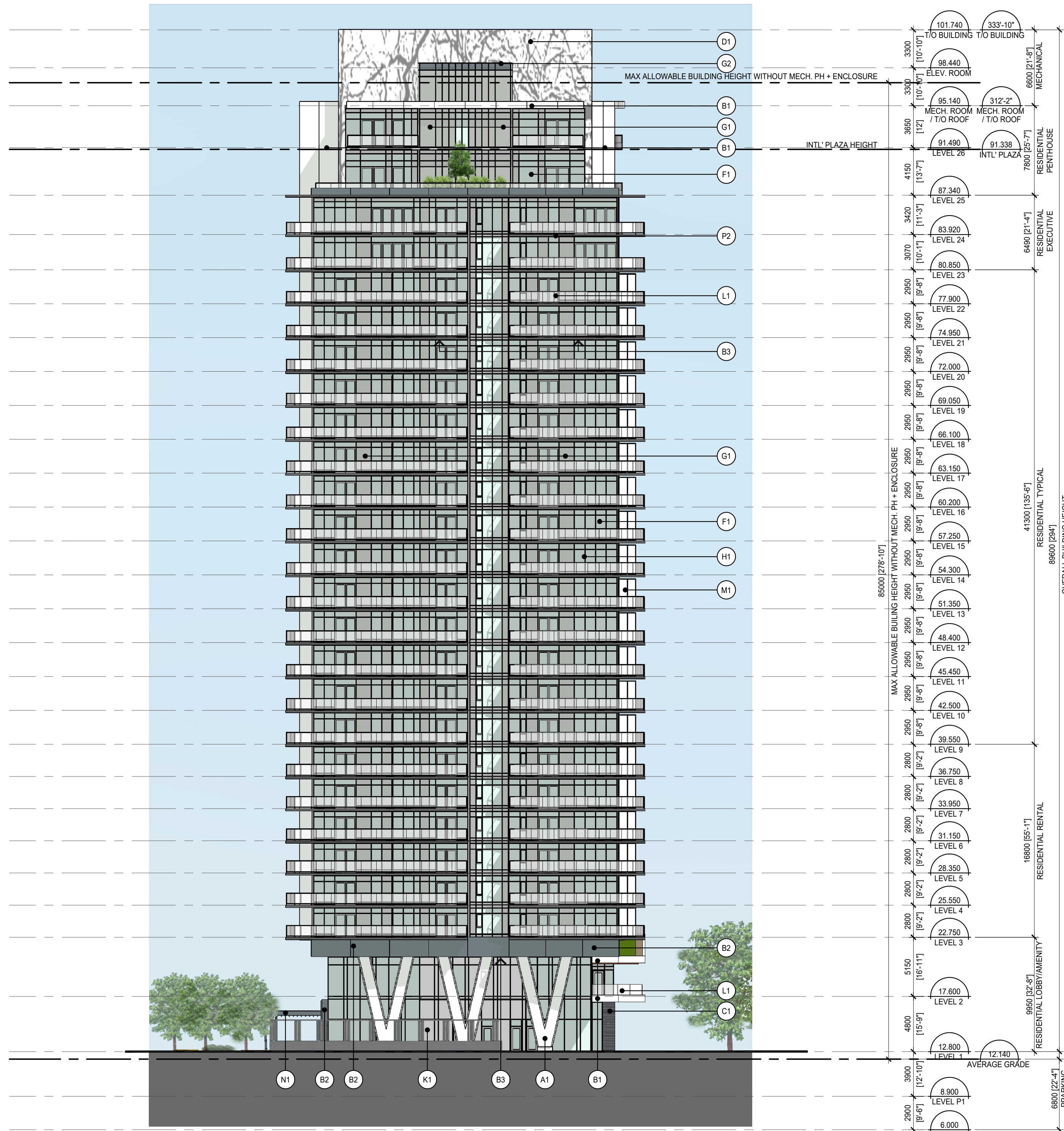
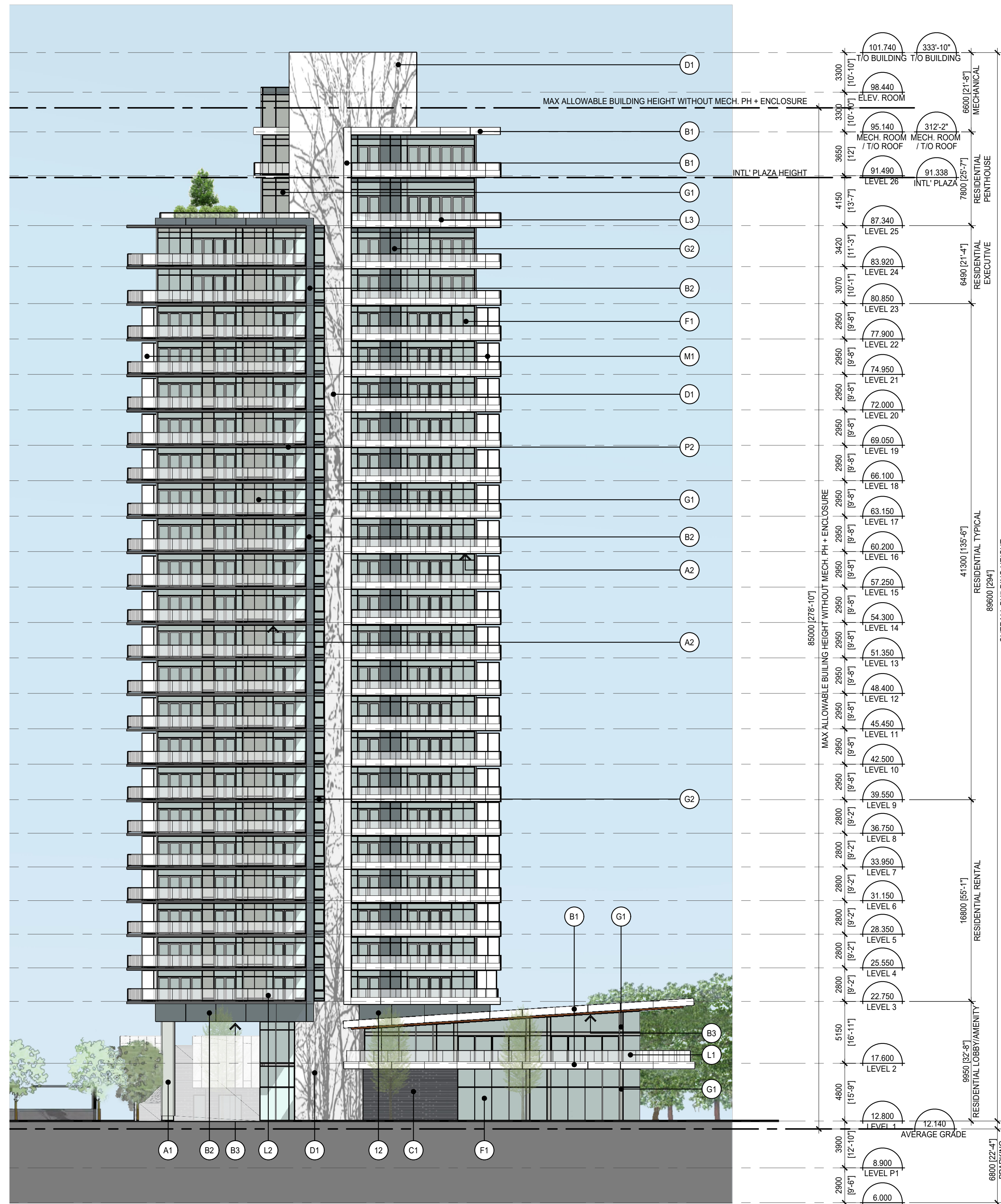
1 NORTH ELEVATION



2 EAST ELEVATION

**MATERIAL & FINISH SCHEDULE**

- (A) ARCHITECTURAL FINISHED CONCRETE**
  - A1: LIGHT - PAINTED TO MATCH BENJAMIN MOORE "2138-70 GRAY LAKE"
  - A2: DARK - PAINTED TO MATCH BENJAMIN MOORE "2127-50 PIKE'S PEAK"
- (B) METAL PANEL**
  - B1: LIGHT - COLOUR TO MATCH BENJAMIN MOORE "2138-70 GRAY LAKE"
  - B2: DARK - COLOUR TO MATCH BENJAMIN MOORE "2127-40 WOLF GRAY"
  - B3: WOODGRAIN SOFFIT - CASCADIA METALS "SADDLE"
- (C) STONE**
  - C1: PANGAEA "BLACK RUNDLE" LEDGESTONE
- (D) PERFORATED METAL PANEL**
  - D1: STAINLESS STEEL MATTE FINISH - CUSTOM IMAGE PATTERN
- (E) CORRUGATED METAL PANEL**
  - E1: DARK HORIZONTAL PATTERN - COLOUR TO MATCH BENJAMIN MOORE "2127-40 WOLF GRAY"
- (F) WINDOW GLAZING**
  - F1: CLEAR LOW-E
- (G) SPANDREL GLASS**
  - G1: LIGHT - COLOUR TO MATCH BENJAMIN MOORE "HC-169 COVENTRY GRAY"
  - G2: DARK - COLOUR TO MATCH BENJAMIN MOORE "2127-40 WOLF GRAY"
- (H) WINDOW WALL FRAME**
  - H1: POWDER COATED TO MATCH BENJAMIN MOORE "HC-169 COVENTRY GRAY"
- (J) CURTAIN WALL FRAME**
  - J1: POWDER COATED TO MATCH BENJAMIN MOORE "HC-169 COVENTRY GRAY"
- (K) CURTAIN WALL SHADOW BOX**
  - K1: "OFF-WHITE" TO MATCH COLOUR OF WINDOW BLINDS - REFER TO INTERIOR DESIGN DRAWINGS.
- (L) GUARDRAIL**
  - L1: FRAMELESS CLEAR STRUCTURAL GLASS WITH POWDER COATED ALUMINUM CAP & RAIL TO MATCH BENJAMIN MOORE "HC-169 COVENTRY GRAY"
  - L2: TOP-MOUNTED POWDER COATED ALUMINUM FRAME & RAIL TO MATCH BENJAMIN MOORE "HC-169 COVENTRY GRAY" WITH CLEAR GLASS
  - L3: SIDE-MOUNTED POWDER COATED ALUMINUM FRAME & RAIL TO MATCH BENJAMIN MOORE "HC-169 COVENTRY GRAY" WITH BACK-PAINTED WHITE GLASS (BOTTOM) AND CLEAR GLASS (TOP)
  - L4: SIDE-MOUNTED POWDER COATED ALUMINUM FRAME & RAIL TO MATCH BENJAMIN MOORE "HC-169 COVENTRY GRAY" WITH FROSTED GLASS
- (M) PRIVACY SCREEN**
  - M1: FROSTED GLASS WITH POWDER COATED ALUMINUM FRAME TO MATCH BENJAMIN MOORE "HC-169 COVENTRY GRAY"
  - M2: PERFORATED METAL PANELS WITH POWDER COATED ALUMINUM FRAME TO MATCH BENJAMIN MOORE "HC-169 COVENTRY GRAY"
- (N) GLASS CANOPY**
  - N1: CLEAR GLASS IN POWDER COATED GALVANIZED STEEL TO MATCH BENJAMIN MOORE "2127-40 WOLF GRAY"
- (P) TRAFFIC COATING**
  - P1: LIGHT - NEOGARD "LIGHT GRAY"
  - P2: DARK - NEOGARD "CHARCOAL"
- (Q) ARCHITECTURAL LOUVER**
  - Q1: COLOUR TO MATCH BENJAMIN MOORE "HC-169 COVENTRY GRAY"
- (R) TOWNHOUSE WOODGRAIN DOORS**
  - R1: COLOUR TO MATCH CASCADIA METALS "SADDLE" WOOD SOFFIT
- (S) STEEL DOORS**
  - S1: COLOUR TO MATCH BENJAMIN MOORE "2127-40 WOLF GRAY"



**MATERIAL & FINISH SCHEDULE**

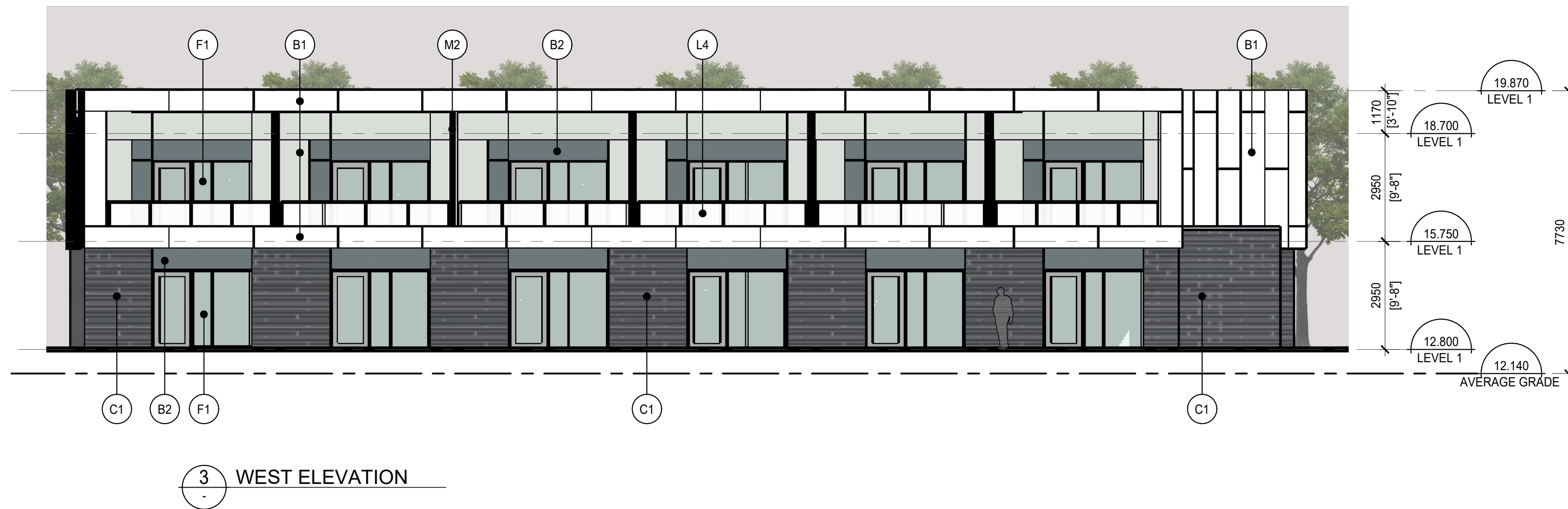
- (A) ARCHITECTURAL FINISHED CONCRETE**
  - A1: LIGHT - PAINTED TO MATCH BENJAMIN MOORE "2138-70 GRAY LAKE"
  - A2: DARK - PAINTED TO MATCH BENJAMIN MOORE "2127-40 PIKE'S PEAK"
- (B) METAL PANEL**
  - B1: LIGHT - COLOUR TO MATCH BENJAMIN MOORE "2138-70 GRAY LAKE"
  - B2: DARK - COLOUR TO MATCH BENJAMIN MOORE "2127-40 WOLF GRAY"
  - B3: WOODGRAIN SOFFIT - CASCADIA METALS "SADDLE"
- (C) STONE**
  - C1: PANGAEA "BLACK RUNDLE" LEDGESTONE
- (D) PERFORATED METAL PANEL**
  - D1: STAINLESS STEEL MATTE FINISH - CUSTOM IMAGE PATTERN
- (E) CORRUGATED METAL PANEL**
  - E1: DARK HORIZONTAL PATTERN - COLOUR TO MATCH BENJAMIN MOORE "2127-40 WOLF GRAY"
- (F) WINDOW GLAZING**
  - F1: CLEAR LOW-E
- (G) SPANDREL GLASS**
  - G1: LIGHT - COLOUR TO MATCH BENJAMIN MOORE "HC-169 COVENTRY GRAY"
  - G2: DARK - COLOUR TO MATCH BENJAMIN MOORE "2127-40 WOLF GRAY"
- (H) WINDOW WALL FRAME**
  - H1: POWDER COATED TO MATCH BENJAMIN MOORE "HC-169 COVENTRY GRAY"
- (J) CURTAIN WALL FRAME**
  - J1: POWDER COATED TO MATCH BENJAMIN MOORE "HC-169 COVENTRY GRAY"
- (K) CURTAIN WALL SHADOW BOX**
  - K1: "OFF-WHITE" TO MATCH COLOUR OF WINDOW BLINDS - REFER TO INTERIOR DESIGN DRAWINGS.
- (L) GUARDRAIL**
  - L1: FRAMELESS CLEAR STRUCTURAL GLASS WITH POWDER COATED ALUMINUM CAP & RAIL TO MATCH BENJAMIN MOORE "HC-169 COVENTRY GRAY"
  - L2: TOP-MOUNTED POWDER COATED ALUMINUM FRAME & RAIL TO MATCH BENJAMIN MOORE "HC-169 COVENTRY GRAY" WITH CLEAR GLASS
  - L3: SIDE-MOUNTED POWDER COATED ALUMINUM FRAME & RAIL TO MATCH BENJAMIN MOORE "HC-169 COVENTRY GRAY" WITH BACK-PAINTED WHITE GLASS (BOTTOM) AND CLEAR GLASS (TOP)
  - L4: SIDE-MOUNTED POWDER COATED ALUMINUM FRAME & RAIL TO MATCH BENJAMIN MOORE "HC-169 COVENTRY GRAY" WITH FROSTED GLASS
- (M) PRIVACY SCREEN**
  - M1: FROSTED GLASS WITH POWDER COATED ALUMINUM FRAME TO MATCH BENJAMIN MOORE "HC-169 COVENTRY GRAY"
  - M2: PERFORATED METAL PANELS WITH POWDER COATED ALUMINUM FRAME TO MATCH BENJAMIN MOORE "HC-169 COVENTRY GRAY"
- (N) GLASS CANOPY**
  - N1: CLEAR GLASS IN POWDER COATED GALVANIZED STEEL TO MATCH BENJAMIN MOORE "2127-40 WOLF GRAY"
- (P) TRAFFIC COATING**
  - P1: LIGHT - NEOGARD "LIGHT GRAY"
  - P2: DARK - NEOGARD "CHARCOAL"
- (Q) ARCHITECTURAL LOUVER**
  - Q1: COLOUR TO MATCH BENJAMIN MOORE "HC-169 COVENTRY GRAY"
- (R) TOWNHOUSE WOODGRAIN DOORS**
  - R1: COLOUR TO MATCH CASCADIA METALS "SADDLE" WOOD SOFFIT
- (S) STEEL DOORS**
  - S1: COLOUR TO MATCH BENJAMIN MOORE "2127-40 WOLF GRAY"

1 SOUTH ELEVATION

2 WEST ELEVATION

**ELEVATIONS SOUTH | WEST - A301**  
**303 MARINE DRIVE - WEST VANCOUVER**  
 1"=20'-0" / 1:240 2020.02.20

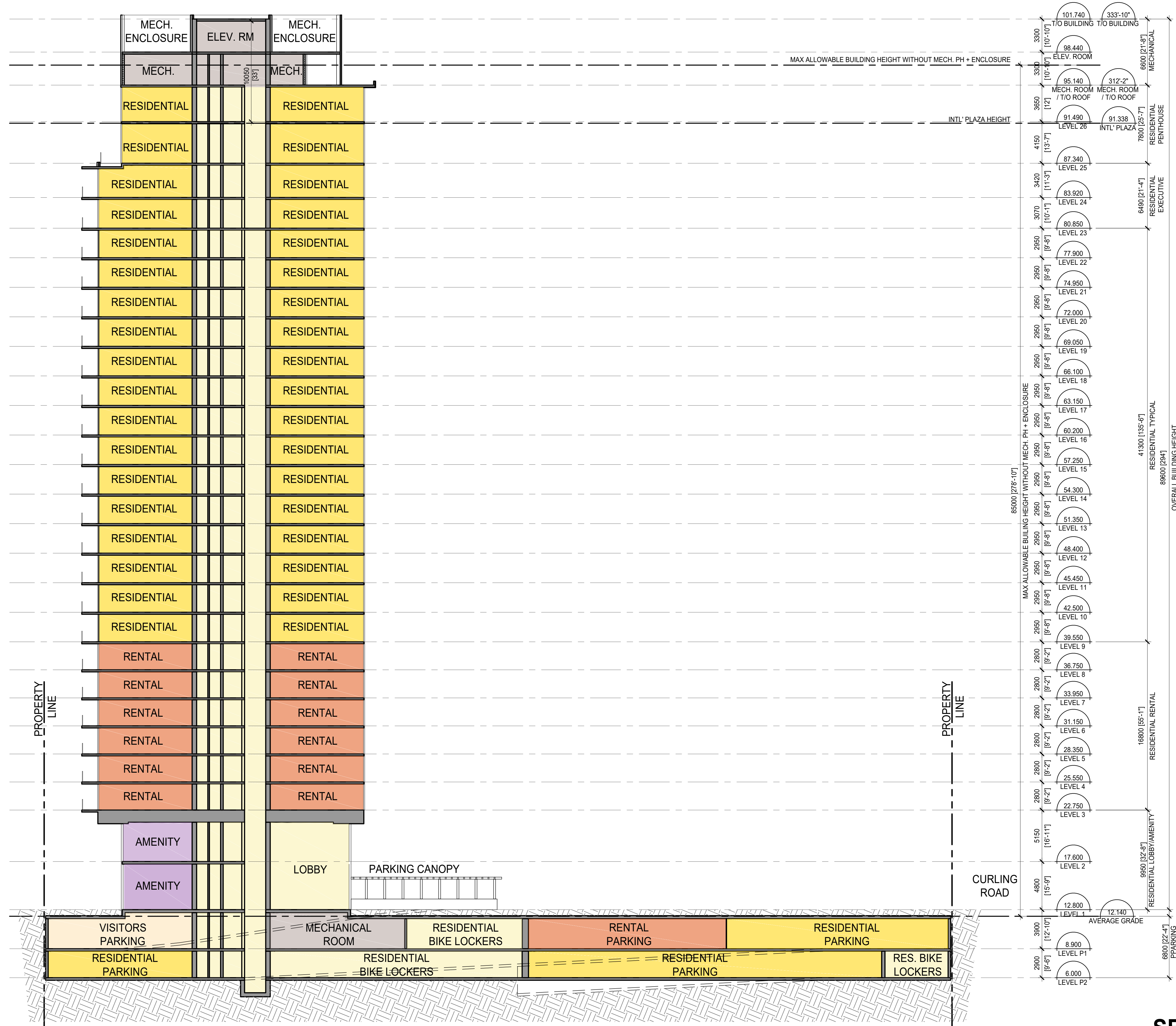




**MATERIAL & FINISH SCHEDULE**

- (A) ARCHITECTURAL FINISHED CONCRETE**  
A1: LIGHT - PAINTED TO MATCH BENJAMIN MOORE "2138-70 GRAY LAKE"  
A2: DARK - PAINTED TO MATCH BENJAMIN MOORE "2127-50 PIKE'S PEAK"
- (B) METAL PANEL**  
B1: LIGHT - COLOUR TO MATCH BENJAMIN MOORE "2138-70 GRAY LAKE"  
B2: DARK - COLOUR TO MATCH BENJAMIN MOORE "2127-40 WOLF GRAY"  
B3: WOODGRAIN SOFFIT - CASCADIA METALS "SADDLE"
- (C) STONE**  
C1: PANGAEA "BLACK RUNDLE" LEDGESTONE
- (D) PERFORATED METAL PANEL**  
D1: STAINLESS STEEL MATTE FINISH - CUSTOM IMAGE PATTERN
- (E) CORRUGATED METAL PANEL**  
E1: DARK HORIZONTAL PATTERN - COLOUR TO MATCH BENJAMIN MOORE "2127-40 WOLF GRAY"
- (F) WINDOW GLAZING**  
F1: CLEAR LOW-E
- (G) SPANDREL GLASS**  
G1: LIGHT - COLOUR TO MATCH BENJAMIN MOORE "HC-169 COVENTRY GRAY"  
G2: DARK - COLOUR TO MATCH BENJAMIN MOORE "2127-40 WOLF GRAY"
- (H) WINDOW WALL FRAME**  
H1: POWDER COATED TO MATCH BENJAMIN MOORE "HC-169 COVENTRY GRAY"
- (J) CURTAIN WALL FRAME**  
J1: POWDER COATED TO MATCH BENJAMIN MOORE "HC-169 COVENTRY GRAY"
- (K) CURTAIN WALL SHADOW BOX**  
K1: "OFF-WHITE" TO MATCH COLOUR OF WINDOW BLINDS - REFER TO INTERIOR DESIGN DRAWINGS.
- (L) GUARDRAIL**  
L1: FRAMELESS CLEAR STRUCTURAL GLASS WITH POWDER COATED ALUMINUM CAP & RAIL TO MATCH BENJAMIN MOORE "HC-169 COVENTRY GRAY"  
L2: TOP-MOUNTED POWDER COATED ALUMINUM FRAME & RAIL TO MATCH BENJAMIN MOORE "HC-169 COVENTRY GRAY" WITH CLEAR GLASS  
L3: SIDE-MOUNTED POWDER COATED ALUMINUM FRAME & RAIL TO MATCH BENJAMIN MOORE "HC-169 COVENTRY GRAY" WITH BACK-PAINTED WHITE GLASS (BOTTOM) AND CLEAR GLASS (TOP)  
L4: SIDE-MOUNTED POWDER COATED ALUMINUM FRAME & RAIL TO MATCH BENJAMIN MOORE "HC-169 COVENTRY GRAY" WITH FROSTED GLASS
- (M) PRIVACY SCREEN**  
M1: FROSTED GLASS WITH POWDER COATED ALUMINUM FRAME TO MATCH BENJAMIN MOORE "HC-169 COVENTRY GRAY"  
M2: PERFORATED METAL PANELS WITH POWDER COATED ALUMINUM FRAME TO MATCH BENJAMIN MOORE "HC-169 COVENTRY GRAY"
- (N) GLASS CANOPY**  
N1: CLEAR GLASS IN POWDER COATED GALVANIZED STEEL TO MATCH BENJAMIN MOORE "2127-40 WOLF GRAY"
- (P) TRAFFIC COATING**  
P1: LIGHT - NEOGARD "LIGHT GRAY"  
P2: DARK - NEOGARD "CHARCOAL"
- (Q) ARCHITECTURAL LOUVER**  
Q1: COLOUR TO MATCH BENJAMIN MOORE "HC-169 COVENTRY GRAY"
- (R) TOWNHOUSE WOODGRAIN DOORS**  
R1: COLOUR TO MATCH CASCADIA METALS "SADDLE" WOOD SOFFIT
- (S) STEEL DOORS**  
S1: COLOUR TO MATCH BENJAMIN MOORE "2127-40 WOLF GRAY"





- LEGEND**
- AMENITY
  - RESIDENTIAL COMMON
  - RENTAL
  - RENTAL PARKING
  - RESIDENTIAL PARKING
  - RESIDENTIAL PARKING
  - RESIDENTIAL VISITOR PARKING
  - SERVICE

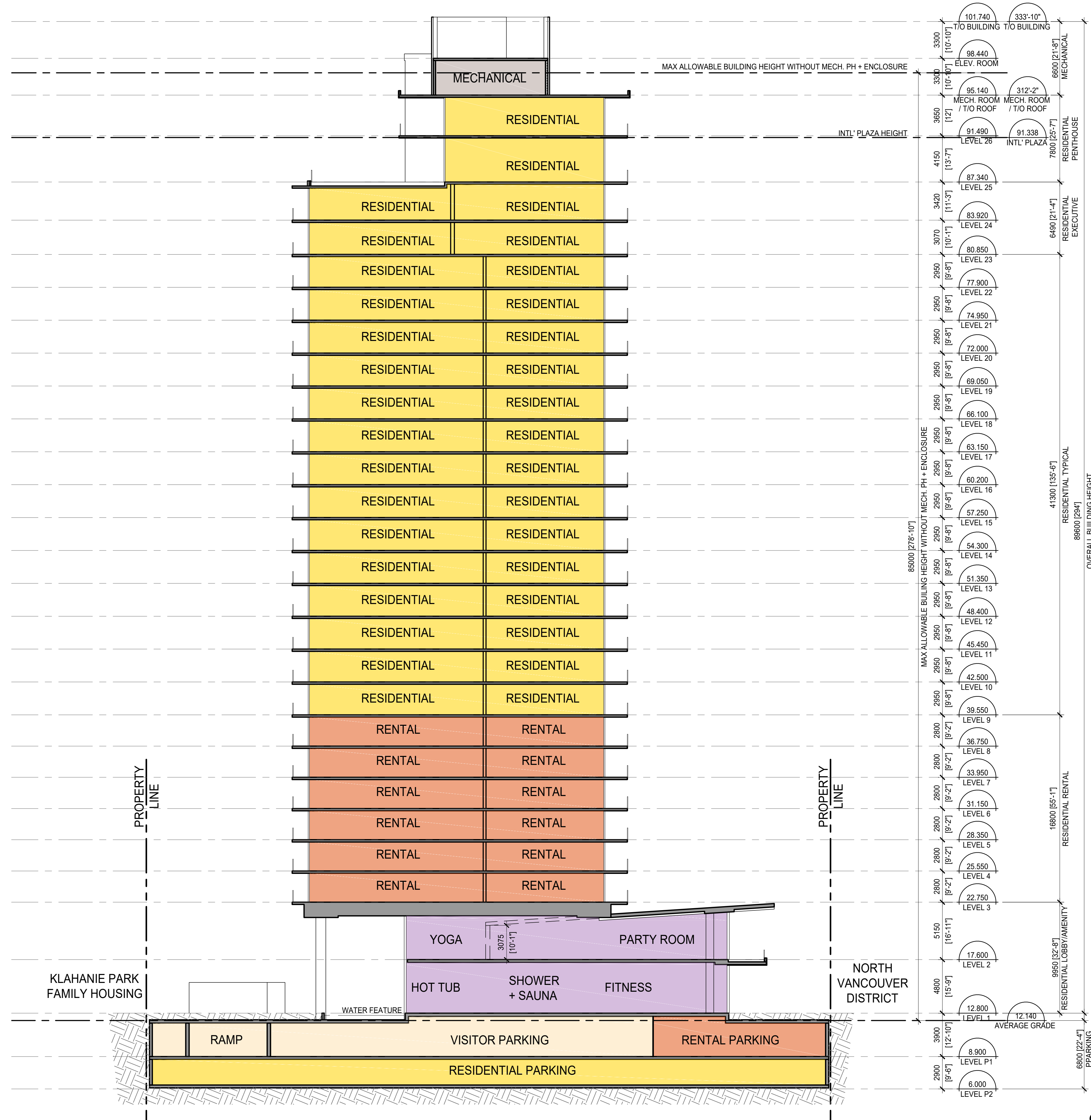
**SECTION A-A - A400**

**303 MARINE DRIVE - WEST VANCOUVER**

1/16"=1'-0" / 1:192 2020.02.20

**LEGEND**

- AMENITY
- RESIDENTIAL COMMON
- RENTAL
- RENTAL PARKING
- RESIDENTIAL
- RESIDENTIAL PARKING
- RESIDENTIAL VISITOR PARKING
- SERVICE



**SECTION B-B - A401**

**303 MARINE DRIVE - WEST VANCOUVER**

1/16"=1'-0" / 1:192 2020.02.20