

# BRITISH PACIFIC PROPERTIES LTD

## WEST VANCOUVER HILLSIDE LANDS

### RODGERS CREEK DEVELOPMENT

#### AREA 6 SUBDIVISION

#### ROAD CLEARING AND PRELIMINARY EARTHWORKS DP

#### DRAWING LIST

C-1	CLEARING PLAN
C-2 AND C-3	CLEARING SECTIONS
C-4 TO C-6	PROFILE - ROAD H
C-7 TO C-9	PROFILE - ROAD G
C-10 TO C-12	CULVERT CROSSING
LI.01 AND LI.02	ILLUSTRATIVE CONCEPT PLAN
LI.03	ROAD CLEARING AND EARTHWORKS PLAN
L5.01 to L5.03	SITE SECTIONS

#### NOTE:

IN ADDITION TO THE ABOVE DRAWINGS, REFER TO APPLICABLE DISTRICT OF WEST VANCOUVER STANDARD DRAWINGS AND MASTER MUNICIPAL STANDARD DRAWINGS.

#### LEGAL DESCRIPTION

- 1) THAT PART OF GROUP 1 DISTRICT LOT 888 LYING TO THE EAST OF BLOCKS B AND C PLAN 2056, EXCEPT: PLANS 21009, 21528 AND BCP386
- 2) LOT 9 BLOCK B DISTRICT LOT 888 PLAN 2056
- 3) LOT 16 BLOCK C DISTRICT LOT 888 PLAN 2056
- 4) LOT 10 BLOCK B DISTRICT LOT 888 PLAN 2056

#### DEVELOPER

British Pacific Properties Ltd.  
Suite 1001, Kapilano 100  
100 Park Royal  
West Vancouver, B.C.  
V7T 1A2

Phone: 604-925-9000  
Fax: 604-922-4364

Contact: Bryce Tupper, P.Eng

#### LANDSCAPE ARCHITECT

PWL Partnership Landscape Architects Inc.  
500-1201 West Pender Street  
Vancouver, B.C.  
V6E 2V2

Phone: 604-688-6111  
Fax: 604-688-6112

Contact: Jason Wegman

#### CONSULTANT

InterCAD Services Ltd.  
1111 West 8th Avenue  
Vancouver, B.C.  
V6H 1C5

Phone: 604-739-7707  
Fax: 604-739-7727

Contact: Iain Lowe, P.Eng

#### LAND SURVEYOR

Chapman Land Surveying Ltd.  
107 - 100 Park Royal South  
West Vancouver, B.C.  
V7T 1A2

Phone: 604-926-7311  
Fax: 604-926-6923

Contact: Bill Chapman, BCLS

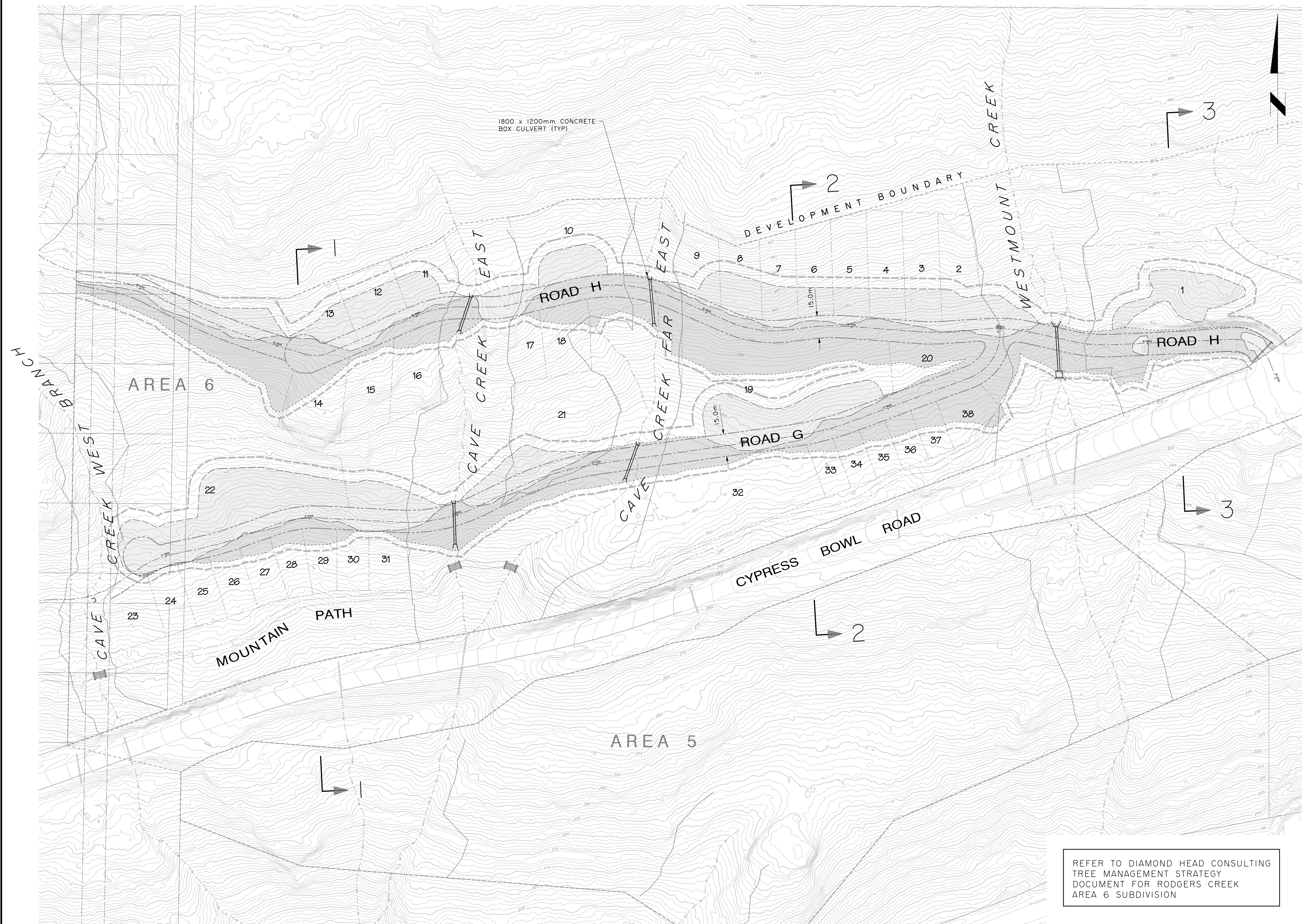


**SITE LOCATION PLAN**  
SCALE 1:5000



**InterCAD**  
CONSULTING ENGINEERS





**LEGEND**

- CLEARING AND GRUBBING LIMIT
- APPROXIMATE CUT ZONE
- APPROXIMATE FILL ZONE

DESIGNED	IL	DRAWN	JM
SCALE	1:1250	DATE	MAY 2016
NO.	REVISION	DATE	BY
1	ROAD CLEARING DP SUBMISSION	16-05-20	JM

REFER TO DIAMOND HEAD CONSULTING TREE MANAGEMENT STRATEGY DOCUMENT FOR RODGERS CREEK AREA 6 SUBDIVISION

BRITISH PACIFIC PROPERTIES LTD

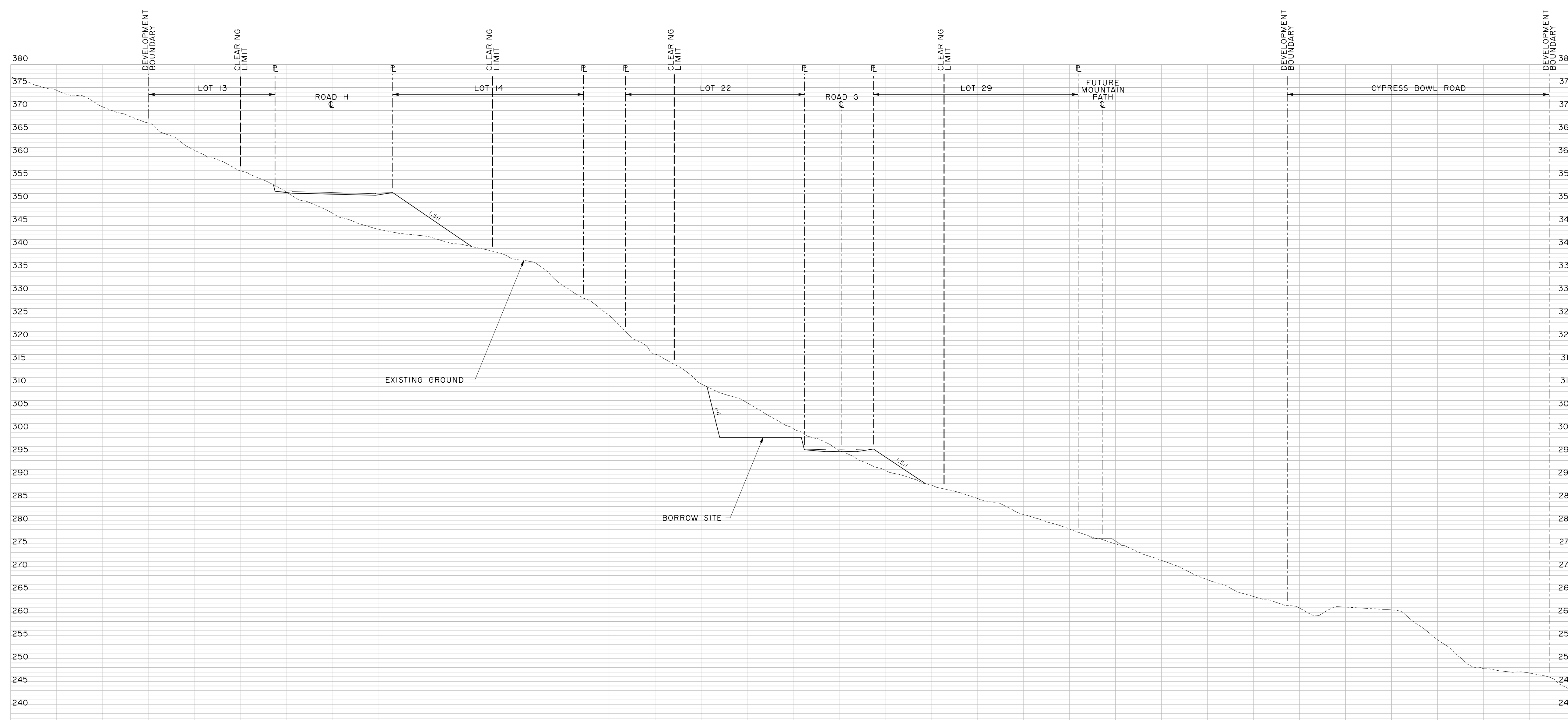
RODGERS CREEK DEVELOPMENT

AREA 6

CLEARING AND ROAD EARTHWORKS PLAN

DRAWING NO.	REV.
C-1	1





SECTION 1

NO.	REVISION	DATE	BY
I	ROAD CLEARING DP SUBMISSION	16-05-20	JM

DESIGNED: IL      DRAWN: JM  
SCALE: 1:500      DATE: MAY 2016

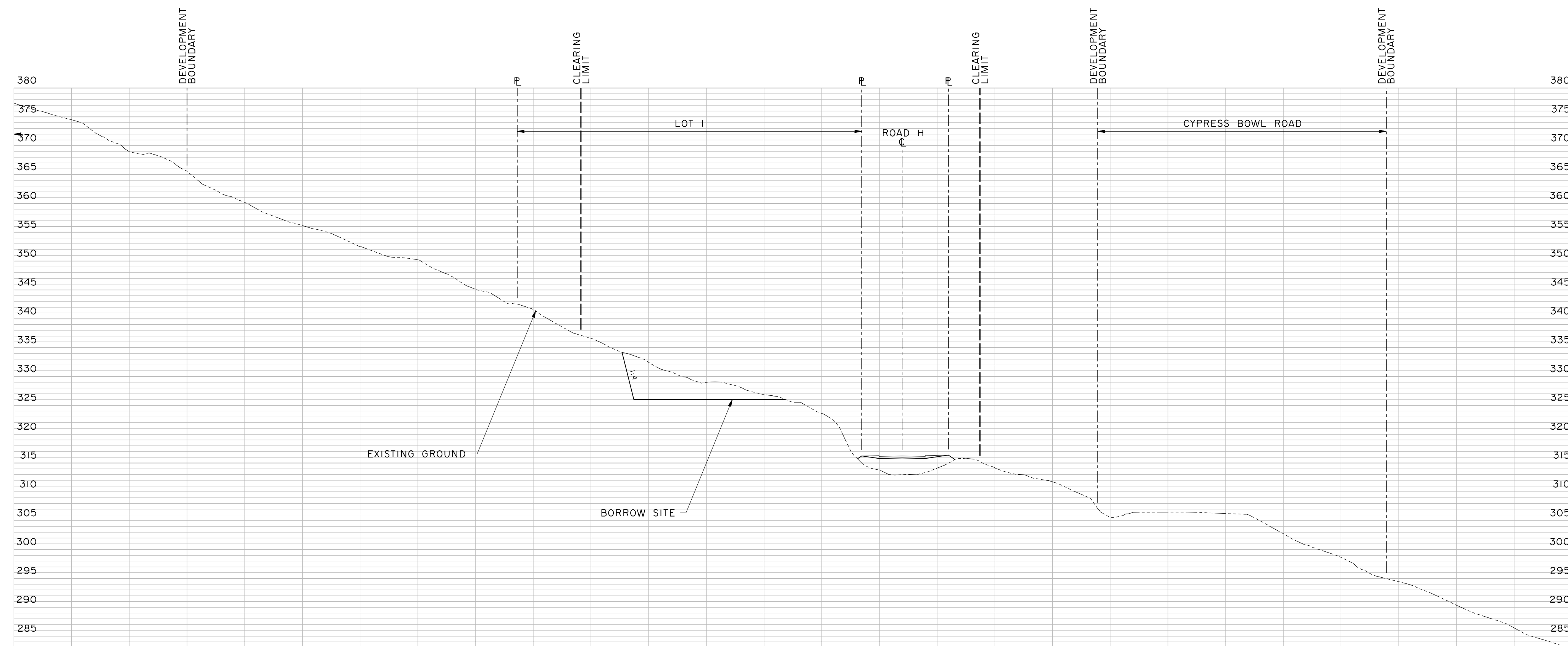
BRITISH PACIFIC PROPERTIES LTD

RODGERS CREEK DEVELOPMENT

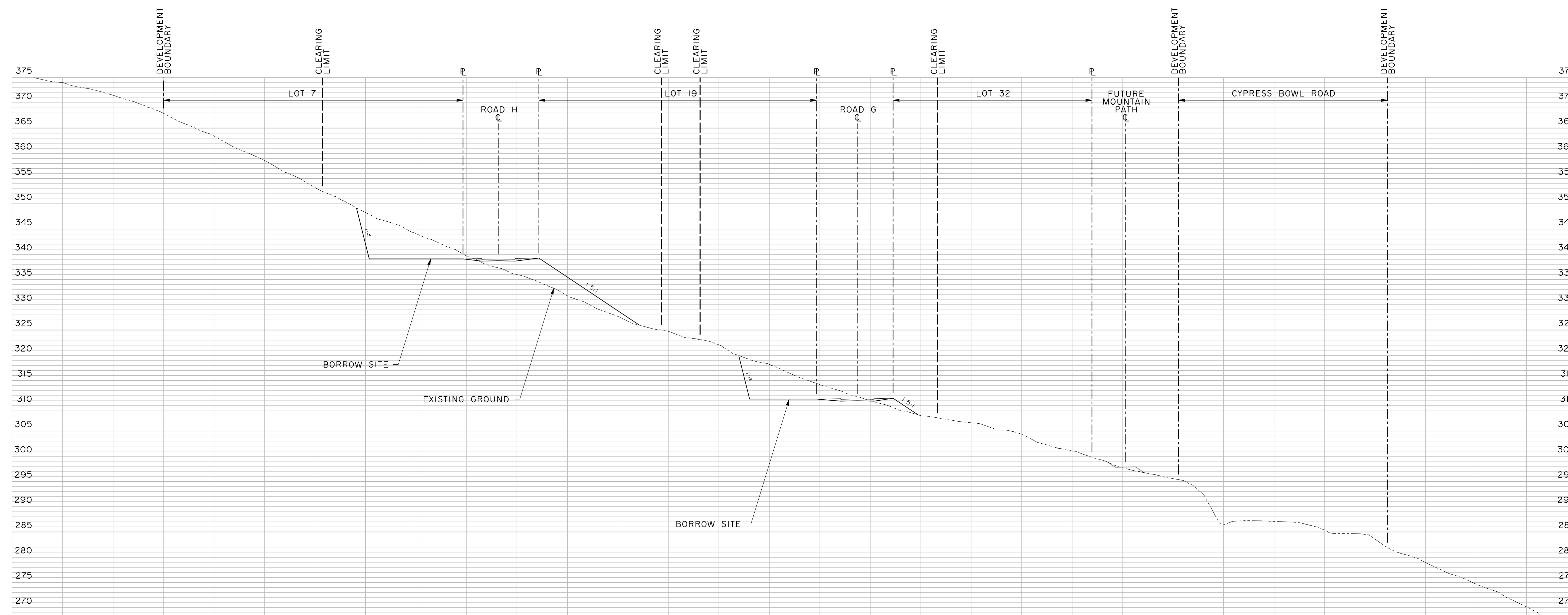
AREA 6

SECTION 1

DRAWING NO.	REV.
C-2	1



SECTION 3



SECTION 2

1	ROAD CLEARING DP SUBMISSION	16-05-20	JM
NO.	REVISION	DATE	BY
DESIGNED	IL	DRAWN	JM
SCALE	1:500	DATE	MAY 2016

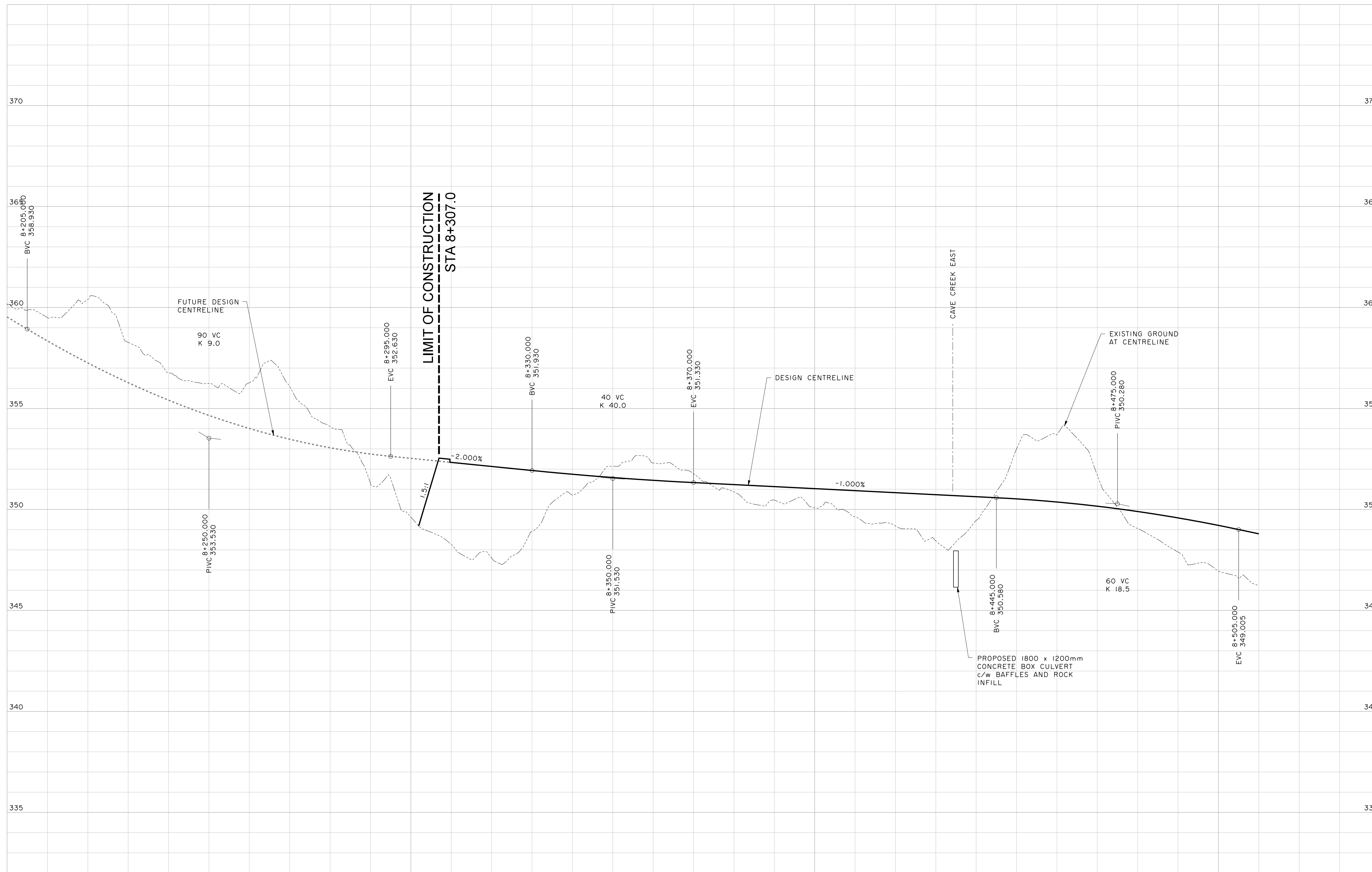
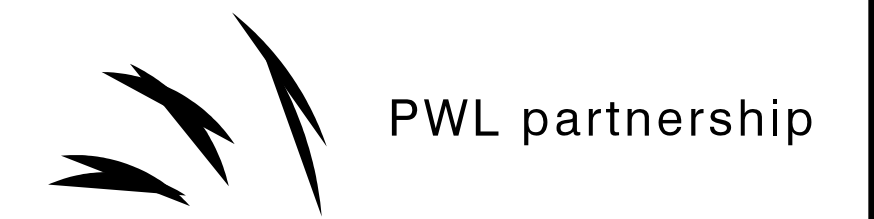
BRITISH PACIFIC  
PROPERTIES LTD

RODGERS CREEK  
DEVELOPMENT

AREA 6

SECTIONS 2 AND 3

DRAWING NO.	REV.
C-3	1



DESIGNED	IL	DRAWN	JM
NO.	REVISION	DATE	BY
1	ROAD CLEARING DP SUBMISSION	16-05-20	JM
SCALE: 1:500H/1:100V		DATE: MAY 2016	

BRITISH PACIFIC PROPERTIES LTD

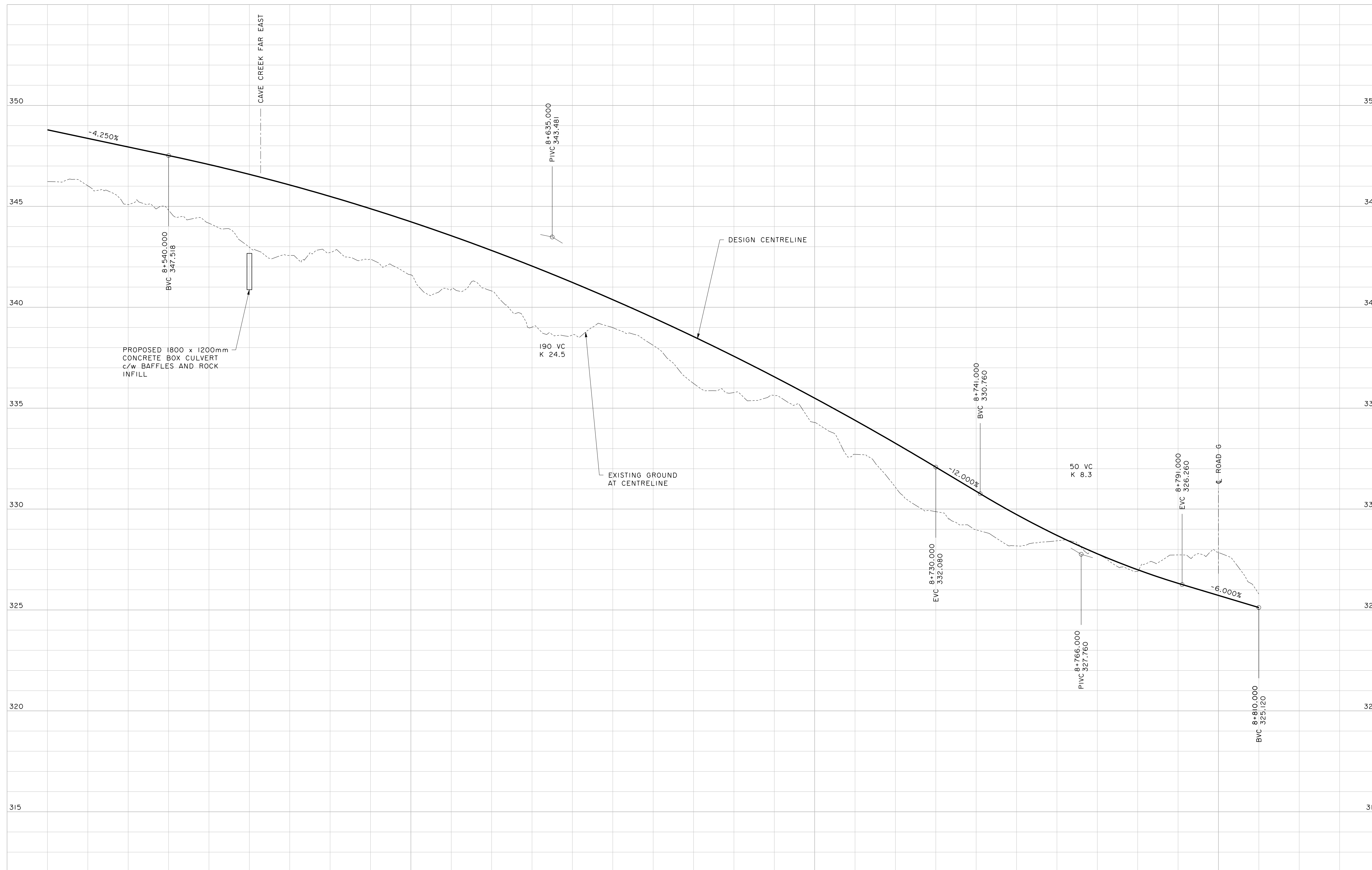
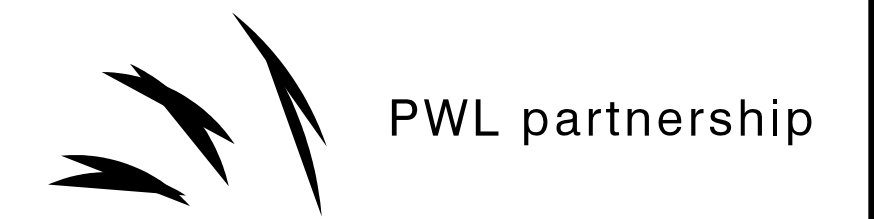
RODGERS CREEK DEVELOPMENT

AREA 6

PROFILE 1 OF 3

ROAD H

8+300	8+310	8+320	8+330	8+340	8+350	8+360	8+370	8+380	8+390	8+400	8+410	8+420	8+430	8+440	8+450	8+460	8+470	8+480	8+490	8+500	8+510	⊕ STATION
	352.33	352.13	351.93	351.74	351.58	351.44	351.33	351.23	351.13	351.03	350.93	350.83	350.73	350.63	350.52	350.37	350.16	349.90	349.68	349.21	348.79	⊕ ELEVATION



346.79	8+510	€ STATION
346.37	8+520	€ ELEVATION
347.94	8+530	
347.52	8+540	
347.07	8+550	
346.59	8+560	
346.06	8+570	
345.49	8+580	
344.88	8+590	
344.23	8+600	
343.54	8+610	
342.81	8+620	
342.04	8+630	
341.23	8+640	
340.38	8+650	
339.48	8+660	
338.55	8+670	
337.57	8+680	
336.55	8+690	
335.50	8+700	
334.40	8+710	
333.26	8+720	
332.08	8+730	
330.88	8+740	
329.73	8+750	
328.70	8+760	
327.78	8+770	
326.99	8+780	
326.32	8+790	
325.72	8+800	
325.12	8+810	

DESIGNED	IL	DRAWN	JM
SCALE	1:500H/1:100V	DATE	MAY 2016
NO.	REVISION	DATE	BY
1	ROAD CLEARING DP SUBMISSION	16-05-20	JM

BRITISH PACIFIC PROPERTIES LTD

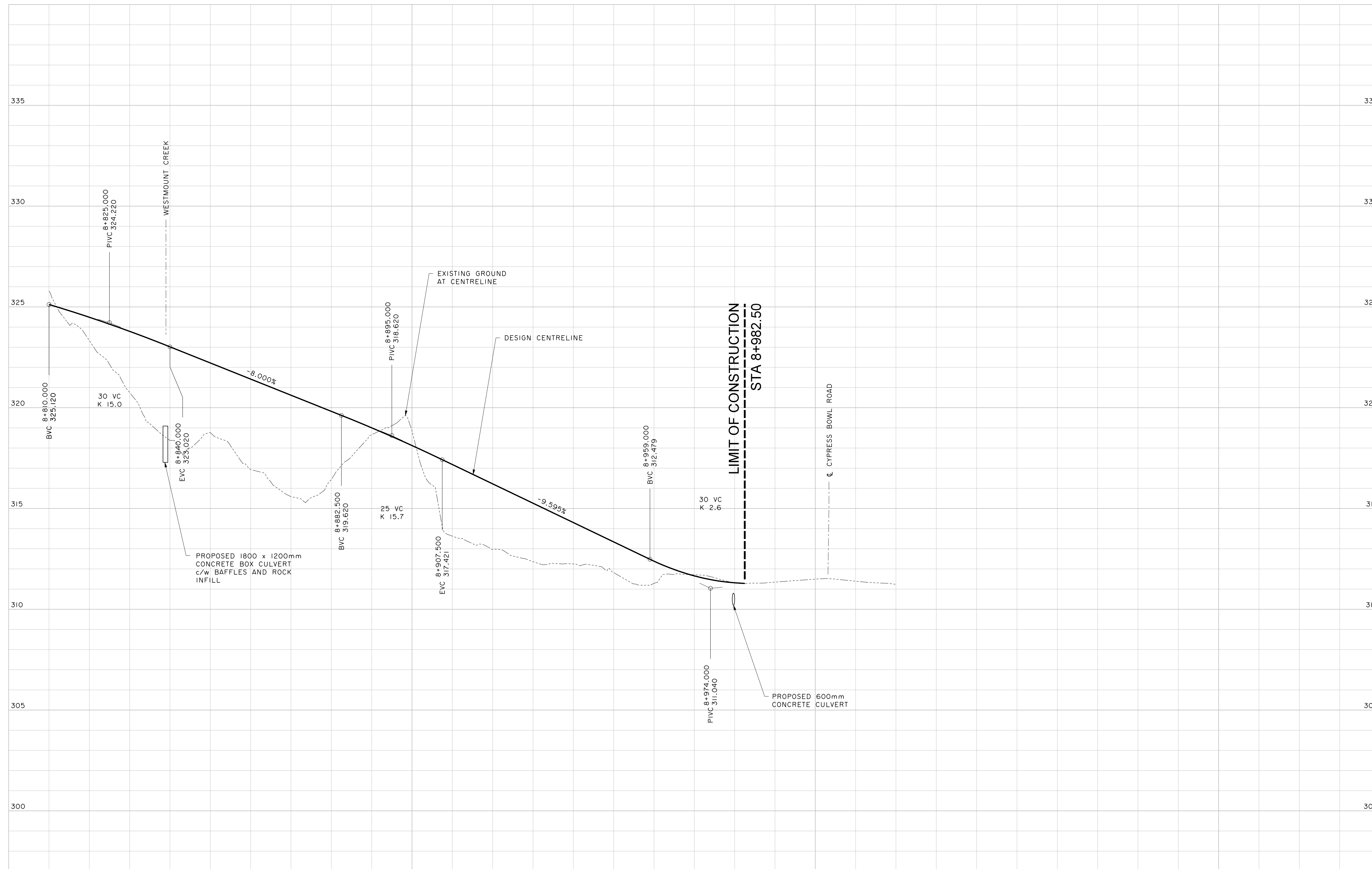
RODGERS CREEK DEVELOPMENT

AREA 6

PROFILE 2 OF 3

ROAD H

DRAWING NO.	REV.
C-5	1



8+810	325.12	⊕ STATION
8+820	324.49	⊕ ELEVATION
8+830	323.79	
8+840	323.02	
8+850	322.22	
8+860	321.42	
8+870	320.62	
8+880	319.82	
8+890	319.00	
8+900	318.12	
8+910	317.18	
8+920	316.22	
8+930	315.26	
8+940	314.30	
8+950	313.34	
8+960	312.38	
8+970	311.66	
8+980	311.31	
8+990	311.36	
9+000	311.56	

NO.	REVISION	DATE	BY
1	ROAD CLEARING DP SUBMISSION	16-05-20	JM

DESIGNED	DRAWN
IL	JM
SCALE	DATE
1:500H/1:100V	MAY 2016

BRITISH PACIFIC  
PROPERTIES LTD

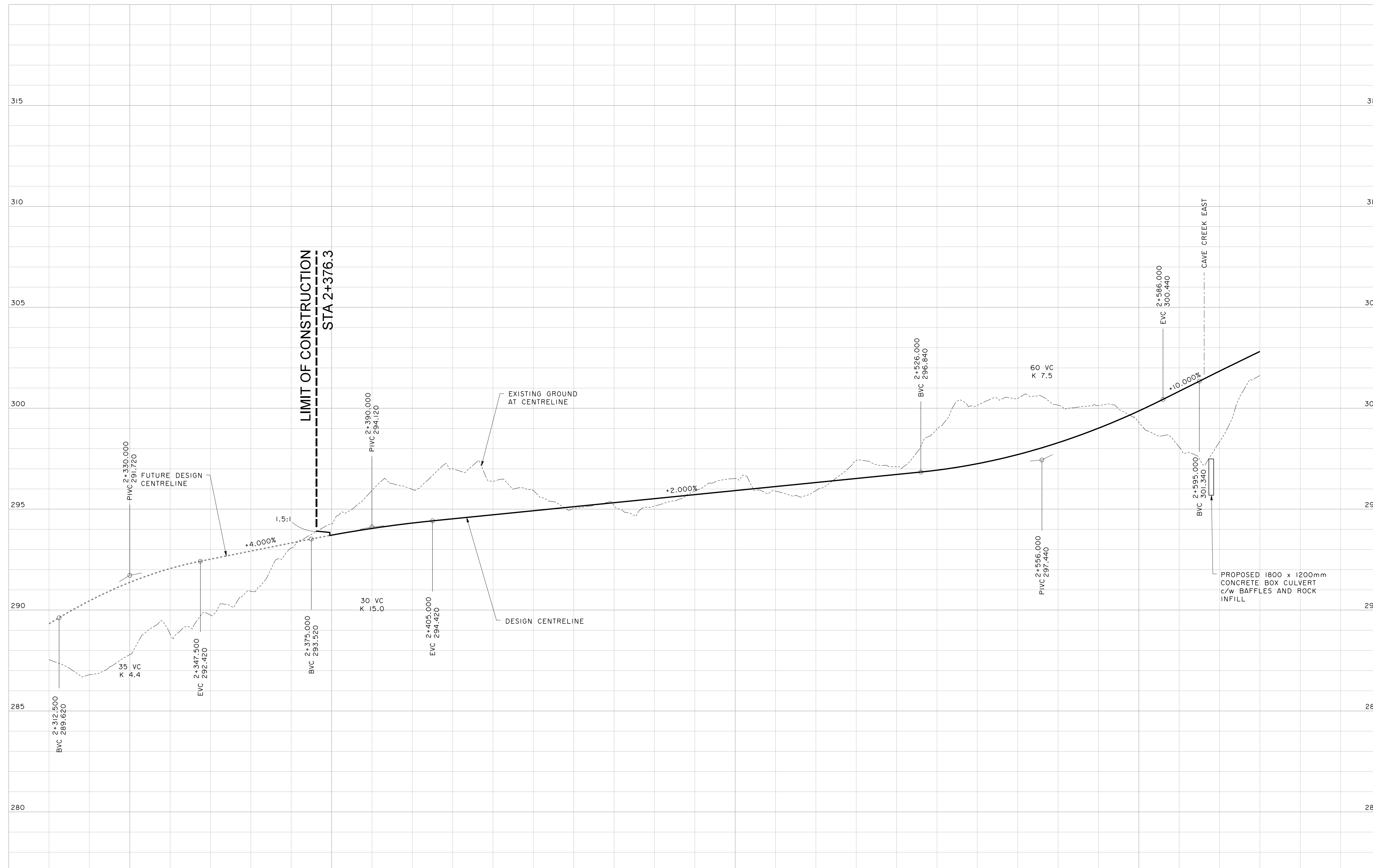
RODGERS CREEK  
DEVELOPMENT

AREA 6

PROFILE 3 OF 3

ROAD H

DRAWING NO.	REV.
C-6	1



2+310	293.71	€ STATION
2+320	294.04	€ ELEVATION
2+330	294.31	
2+340	294.52	
2+350	294.72	
2+360	294.92	
2+370	295.12	
2+380	295.32	
2+390	295.52	
2+400	295.72	
2+410	295.92	
2+420	296.12	
2+430	296.32	
2+440	296.52	
2+450	296.72	
2+460	296.92	
2+470	297.25	
2+480	297.70	
2+490	298.29	
2+500	299.01	
2+510	299.86	
2+520	300.84	
2+530	301.84	
2+540	302.81	

NO.	REVISION	DATE	BY
1	ROAD CLEARING DP SUBMISSION	16-05-20	JM
DESIGNED	IL	DRAWN	JM
SCALE	1:500H/1:100V	DATE	MAY 2016

BRITISH PACIFIC PROPERTIES LTD

RODGERS CREEK DEVELOPMENT

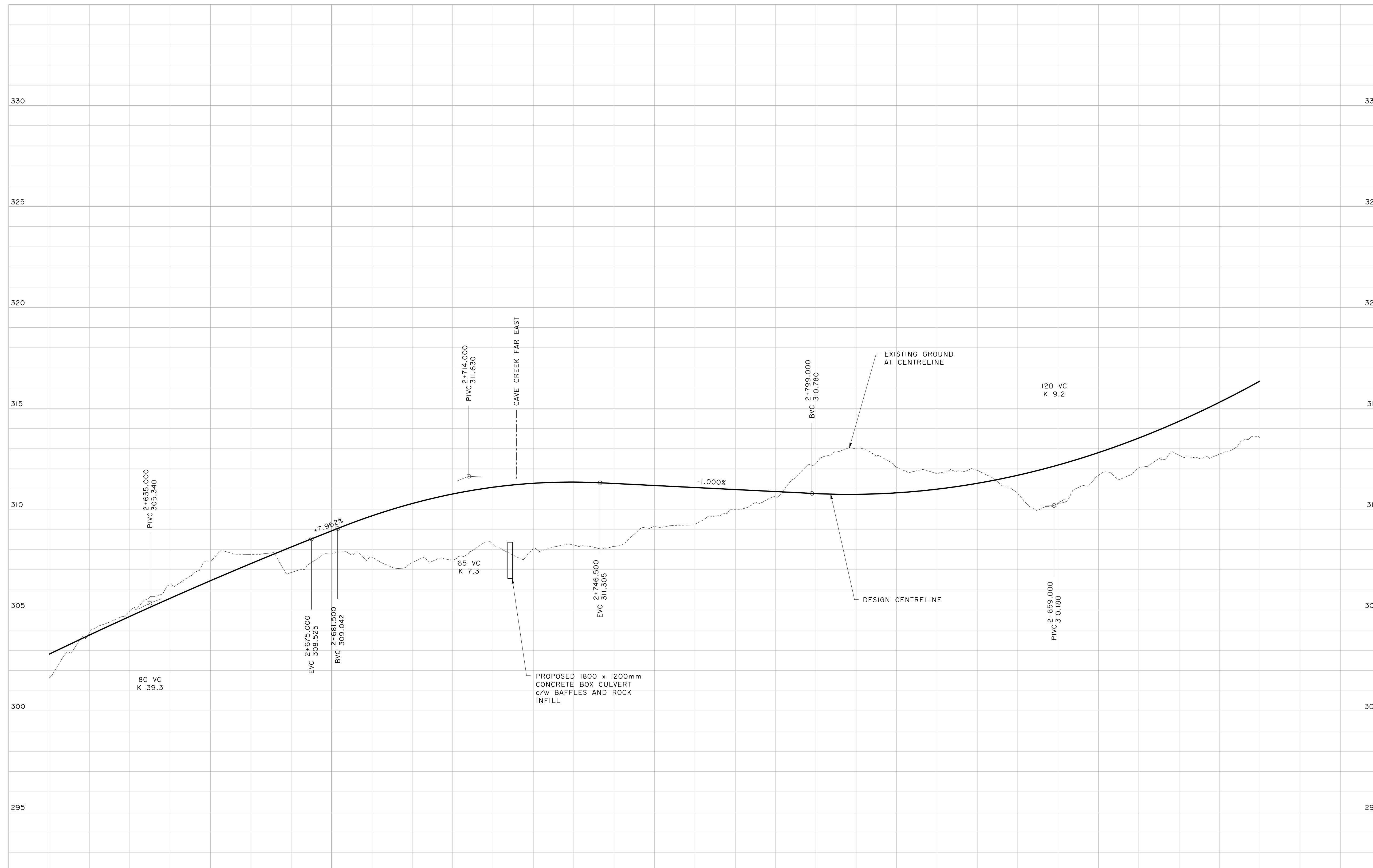
AREA 6

PROFILE 1 OF 3

ROAD G

DRAWING NO.	REV.
C-7	1





302.81	2+610	⊕ STATION
303.76	2+620	
304.68	2+630	
305.58	2+640	
306.45	2+650	
307.30	2+660	
308.12	2+670	
308.92	2+680	
309.67	2+690	
310.28	2+700	
310.75	2+710	
311.09	2+720	
311.28	2+730	
311.34	2+740	
311.27	2+750	
311.17	2+760	
311.07	2+770	
310.97	2+780	
310.87	2+790	
310.77	2+800	
310.74	2+810	
310.81	2+820	
310.99	2+830	
311.28	2+840	
311.68	2+850	
312.19	2+860	
312.60	2+870	
313.52	2+880	
314.36	2+890	
315.30	2+900	
316.34	2+910	
		⊕ ELEVATION

DESIGNED	IL	DRAWN	JM
NO.	REVISION	DATE	BY
1	ROAD CLEARING DP SUBMISSION	16-05-20	JM
SCALE: 1:500H/1:100V		DATE: MAY 2016	

BRITISH PACIFIC PROPERTIES LTD

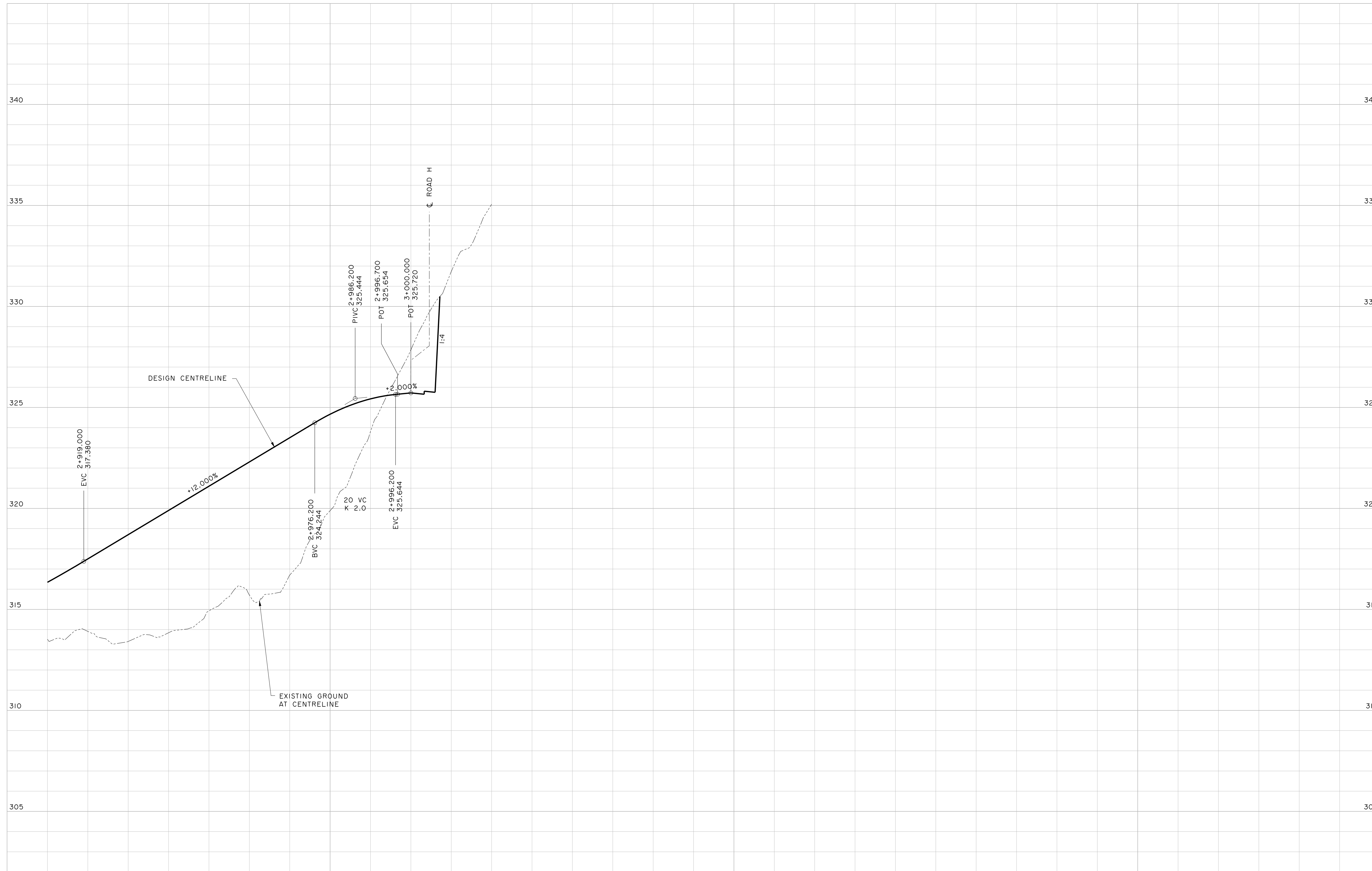
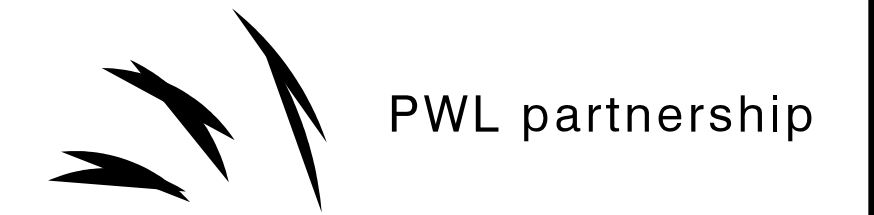
RODGERS CREEK DEVELOPMENT

AREA 6

PROFILE 2 OF 3

ROAD G

DRAWING NO.	REV.
C-8	1



STATION	ELEVATION
2+910	316.34
2+920	317.50
2+930	318.70
2+940	319.90
2+950	321.10
2+960	322.30
2+970	323.50
2+980	324.56
2+990	325.42
3+000	325.72
3+010	

NO.	REVISION	DATE	BY
1	ROAD CLEARING DP SUBMISSION	16-05-20	JM

DESIGNED: IL  
DRAWN: JM  
SCALE: 1:500H/1:100V  
DATE: MAY 2016

BRITISH PACIFIC PROPERTIES LTD

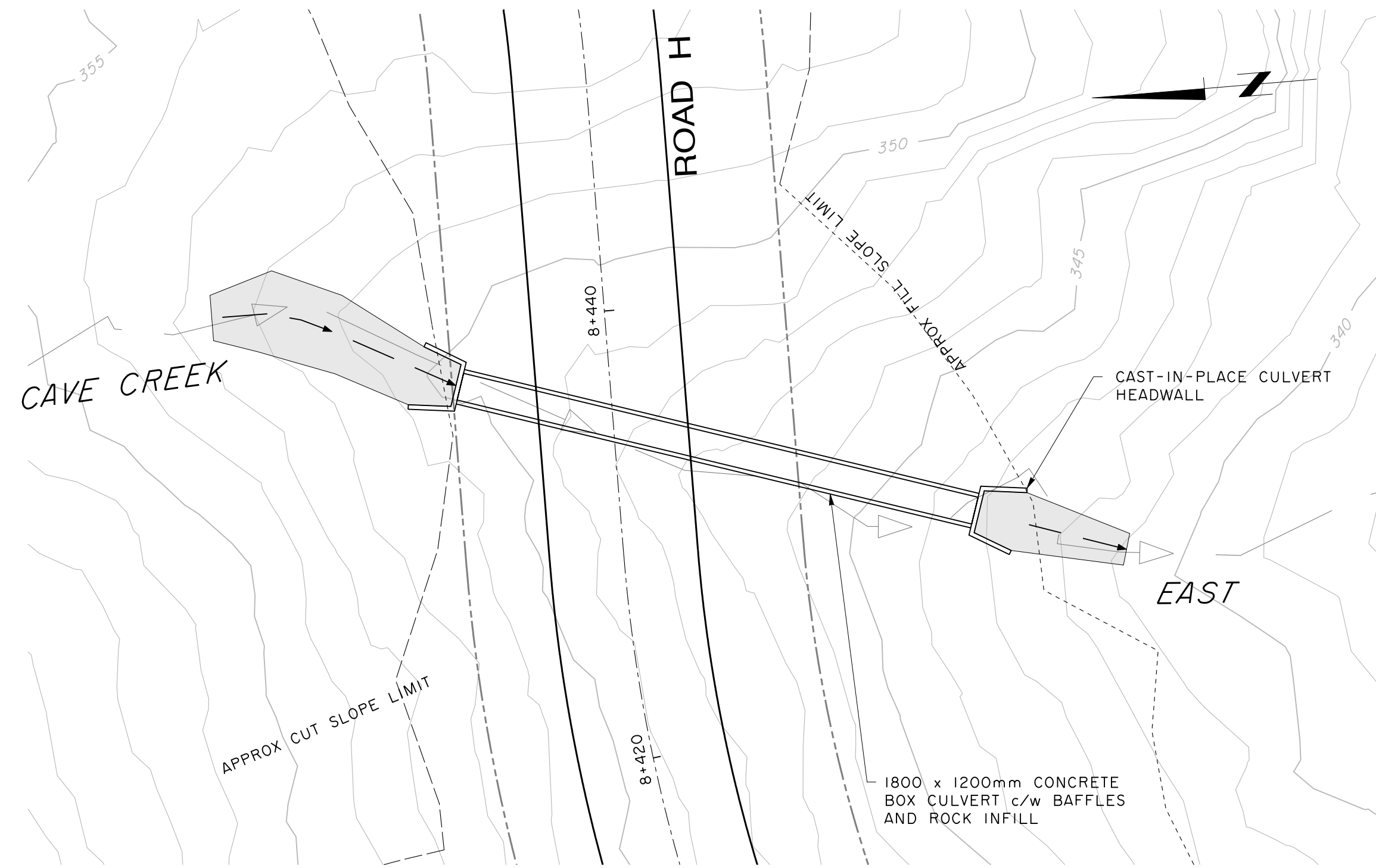
RODGERS CREEK DEVELOPMENT

AREA 6

PROFILE 3 OF 3

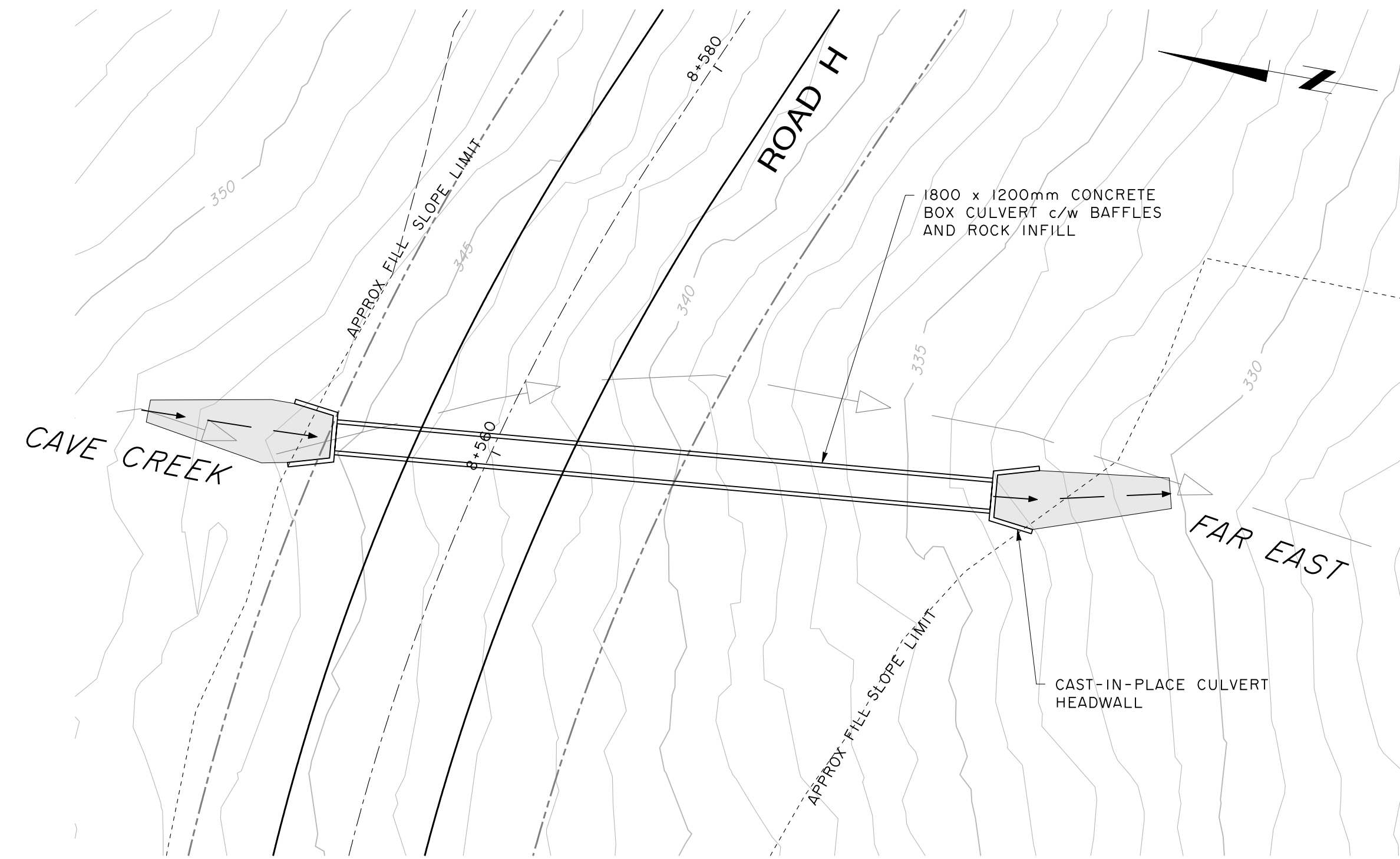
ROAD G

DRAWING NO.	REV.
C-9	1



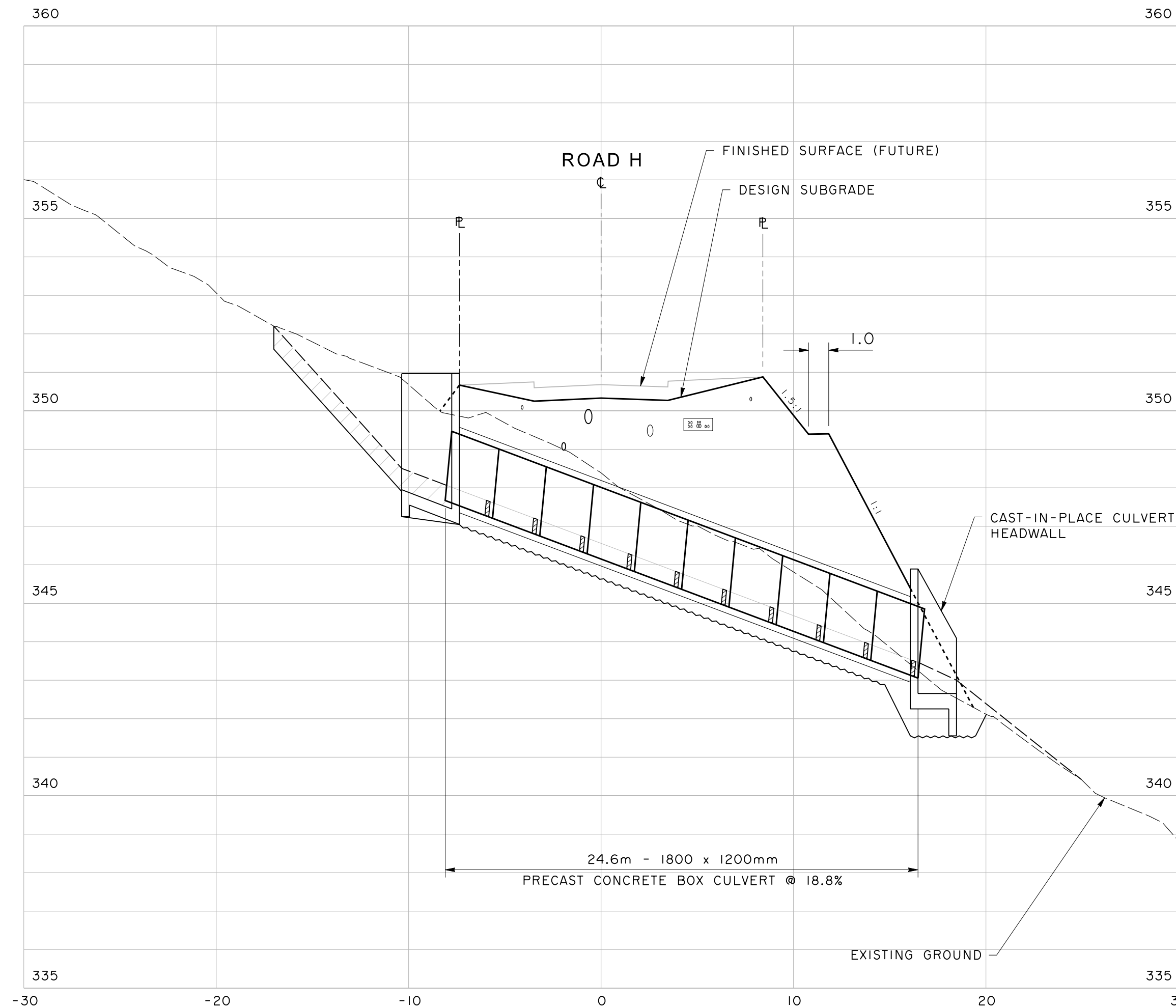
**PLAN - CAVE CREEK EAST**

SCALE 1:200



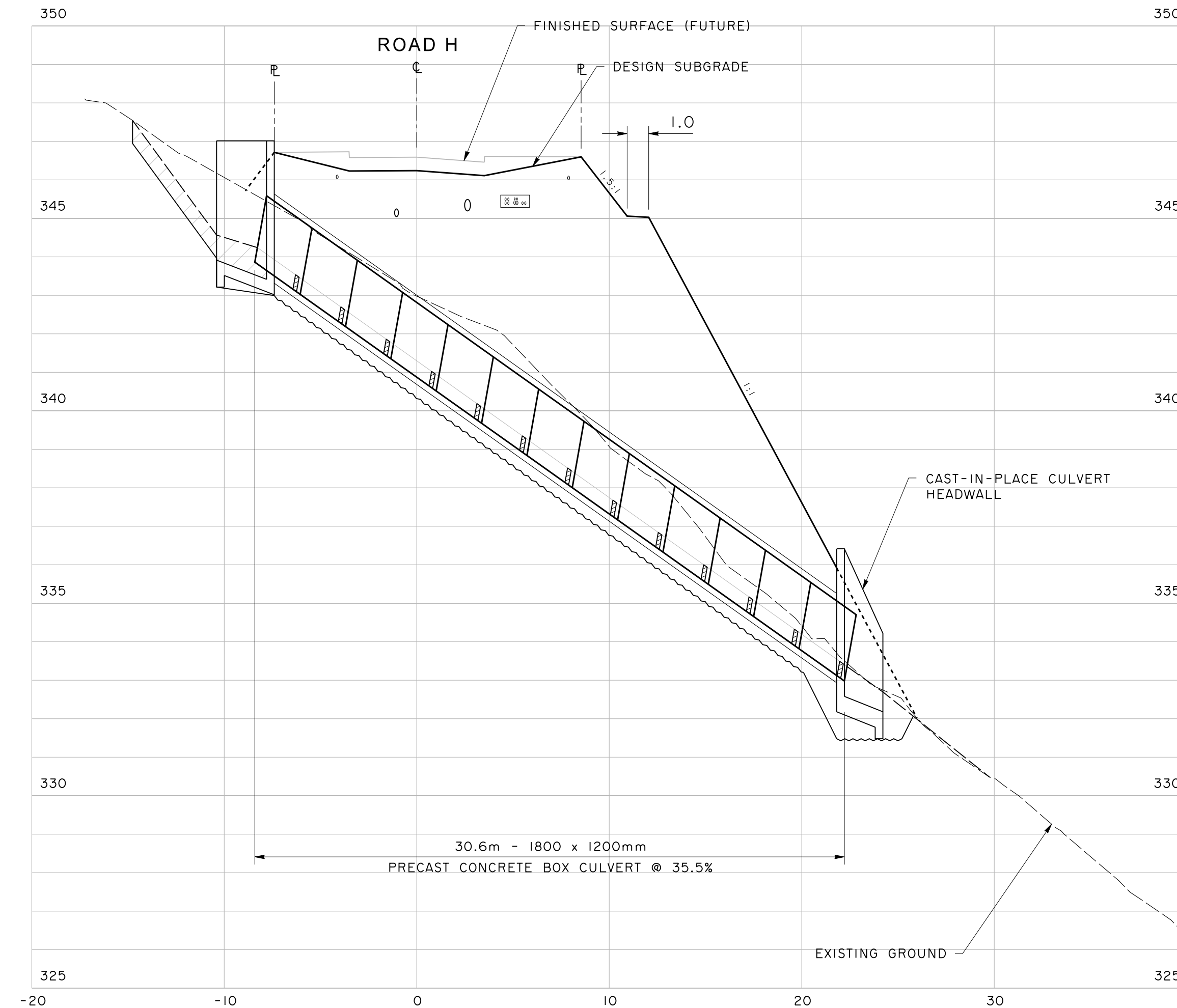
**PLAN - CAVE CREEK FAR EAST**

SCALE 1:200



**PROFILE - CAVE CREEK EAST**

SCALE 1:200H/1:100V



**PROFILE - CAVE CREEK FAR EAST**

SCALE 1:200H/1:100V

DESIGNED	JK	DRAWN	JM
SCALE	AS SHOWN	DATE	MAY 2016

BRITISH PACIFIC  
PROPERTIES LTD

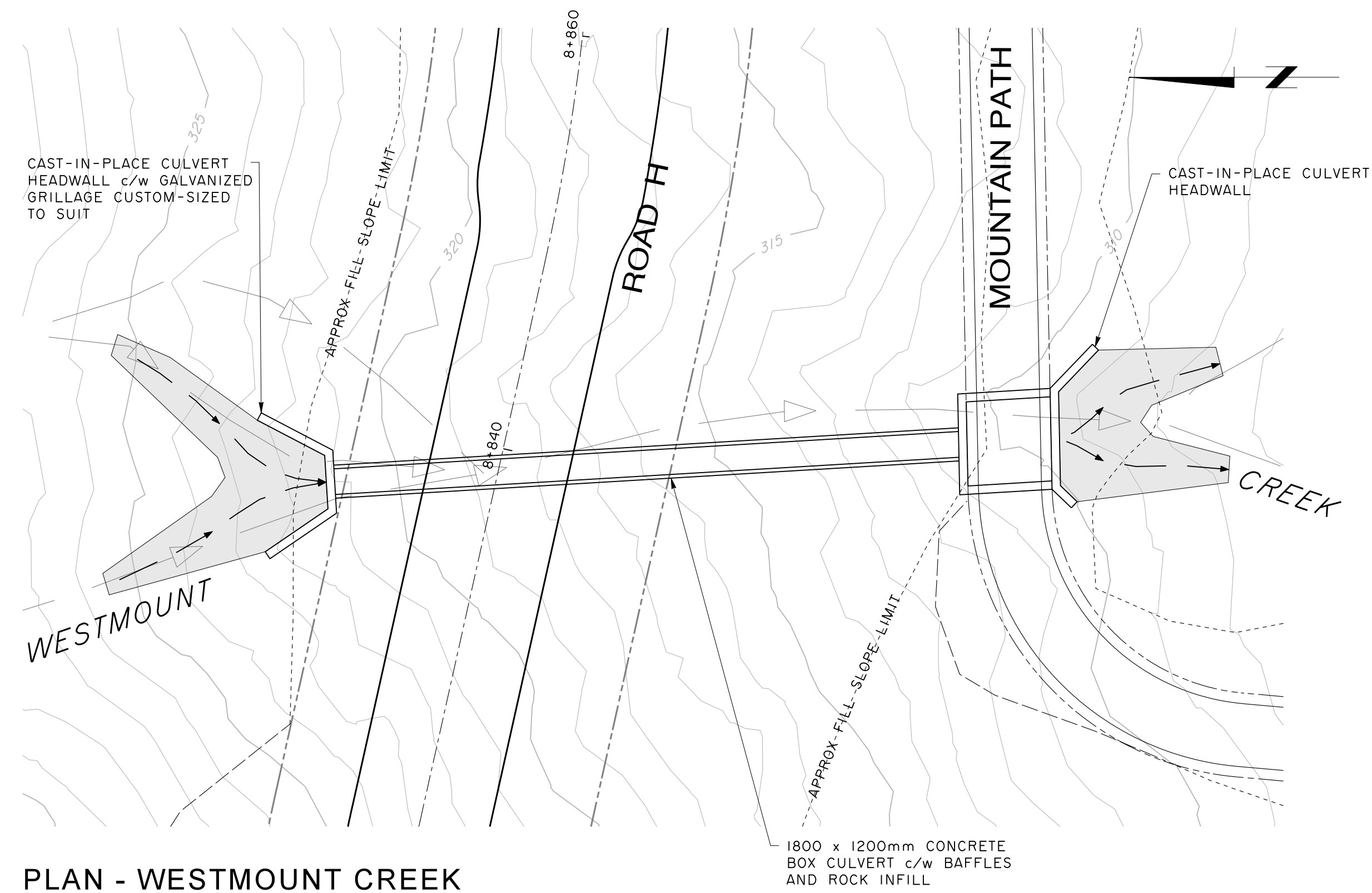
RODGERS CREEK  
DEVELOPMENT

AREA 6

CULVERT CROSSING

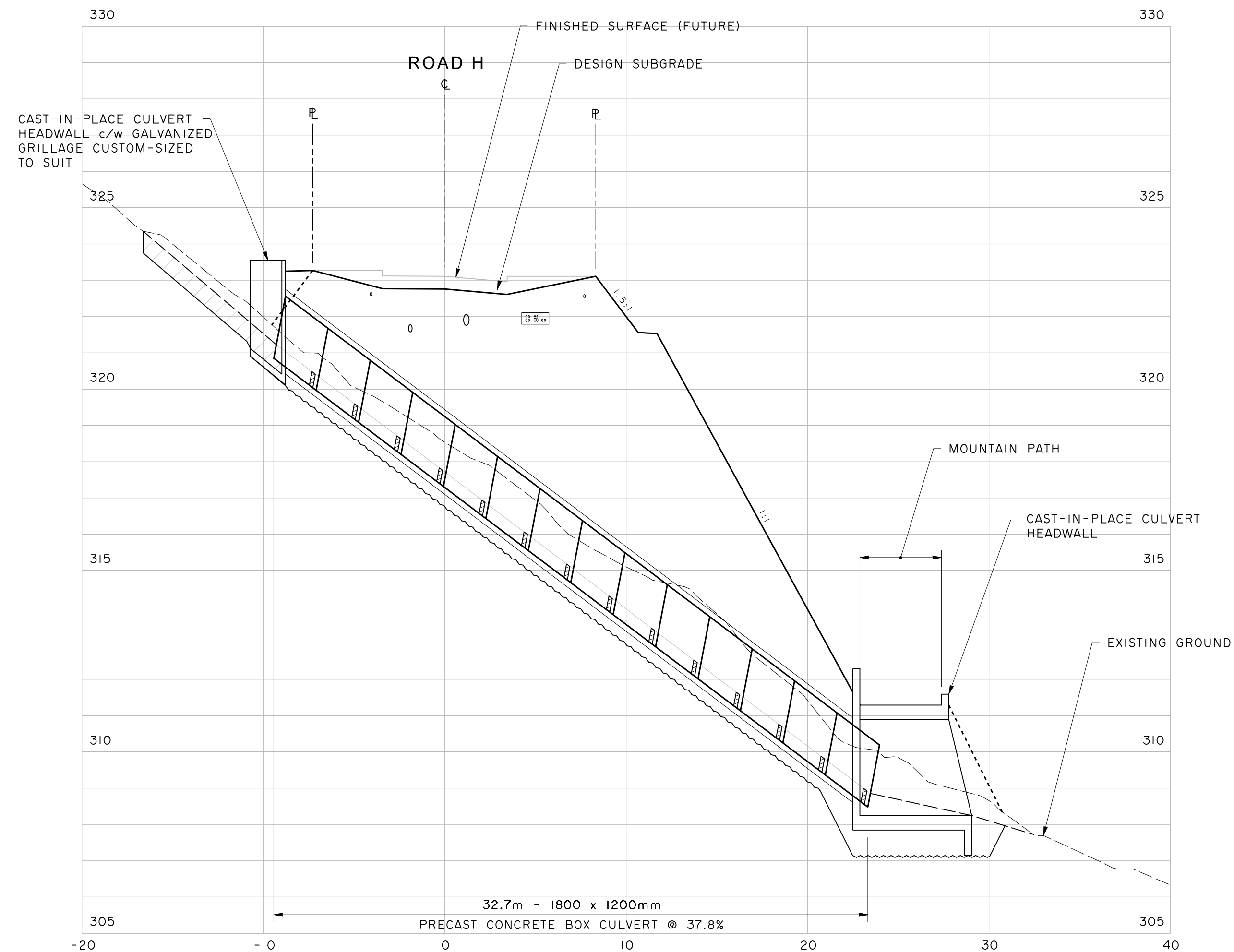
CAVE CREEKS  
ROAD H

DRAWING NO.	REV.
C-10	1



**PLAN - WESTMOUNT CREEK**

SCALE 1:200



**PROFILE - WESTMOUNT CREEK**

SCALE 1:200H/1:100V

NO.	REVISION	DATE	BY
I	ROAD CLEARING DP SUBMISSION	16-05-20	JM
DESIGNED	JK	DRAWN	JM
SCALE	AS SHOWN	DATE	MAY 2016

BRITISH PACIFIC  
PROPERTIES LTD

RODGERS CREEK  
DEVELOPMENT

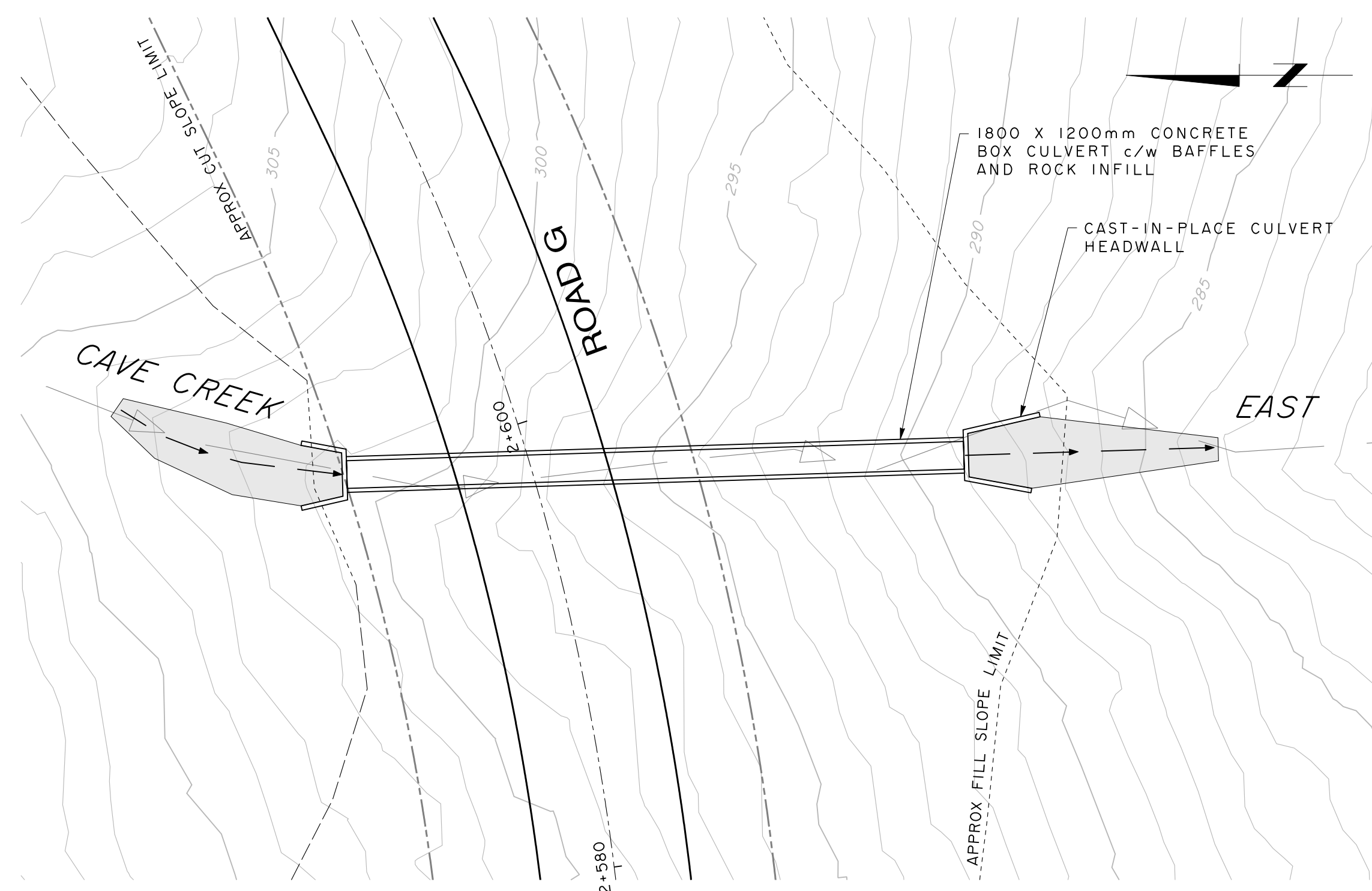
AREA 6

CULVERT CROSSING

WESTMOUNT CREEK  
ROAD H

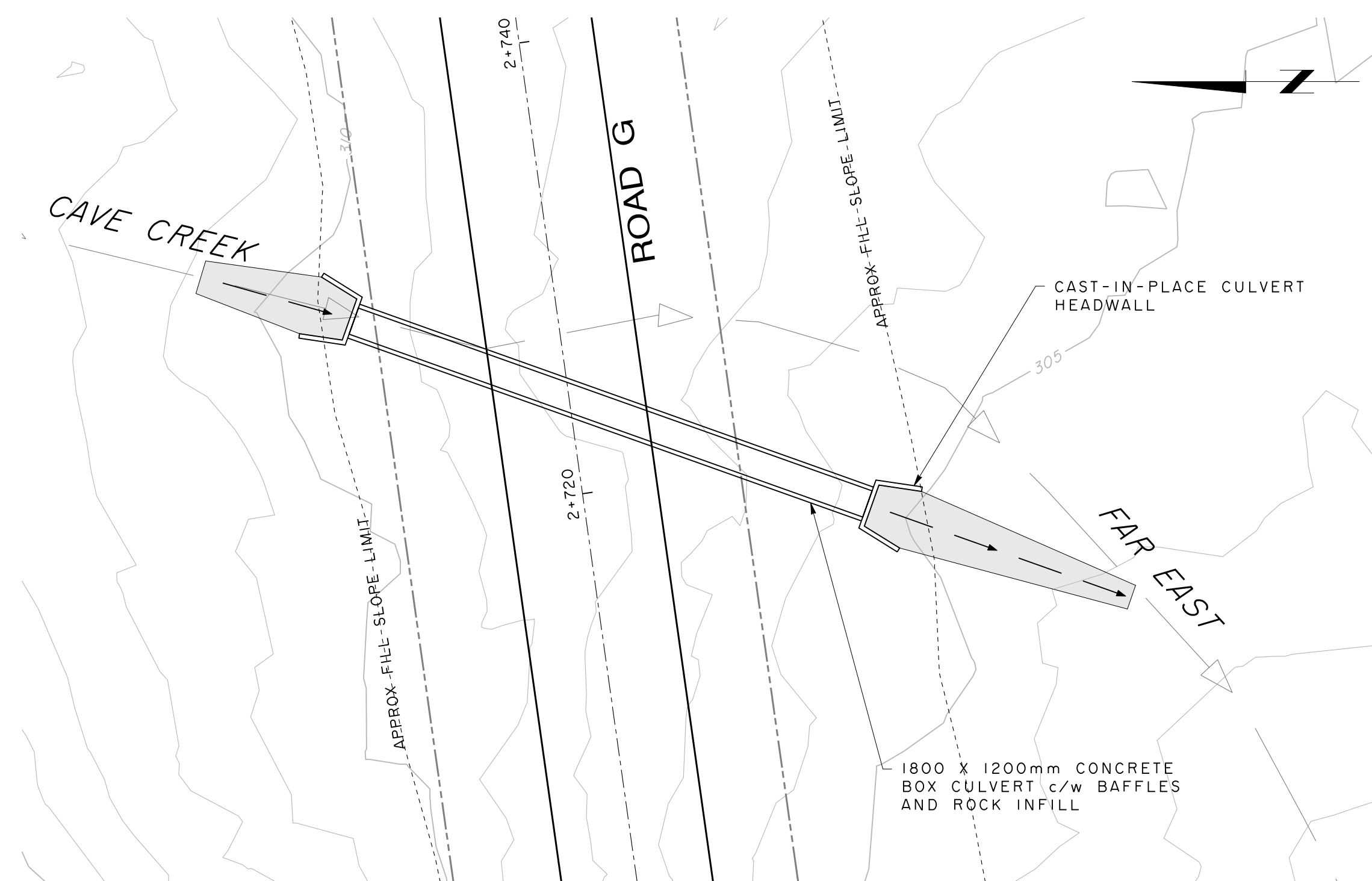
DRAWING NO.	REV.
C-II	I





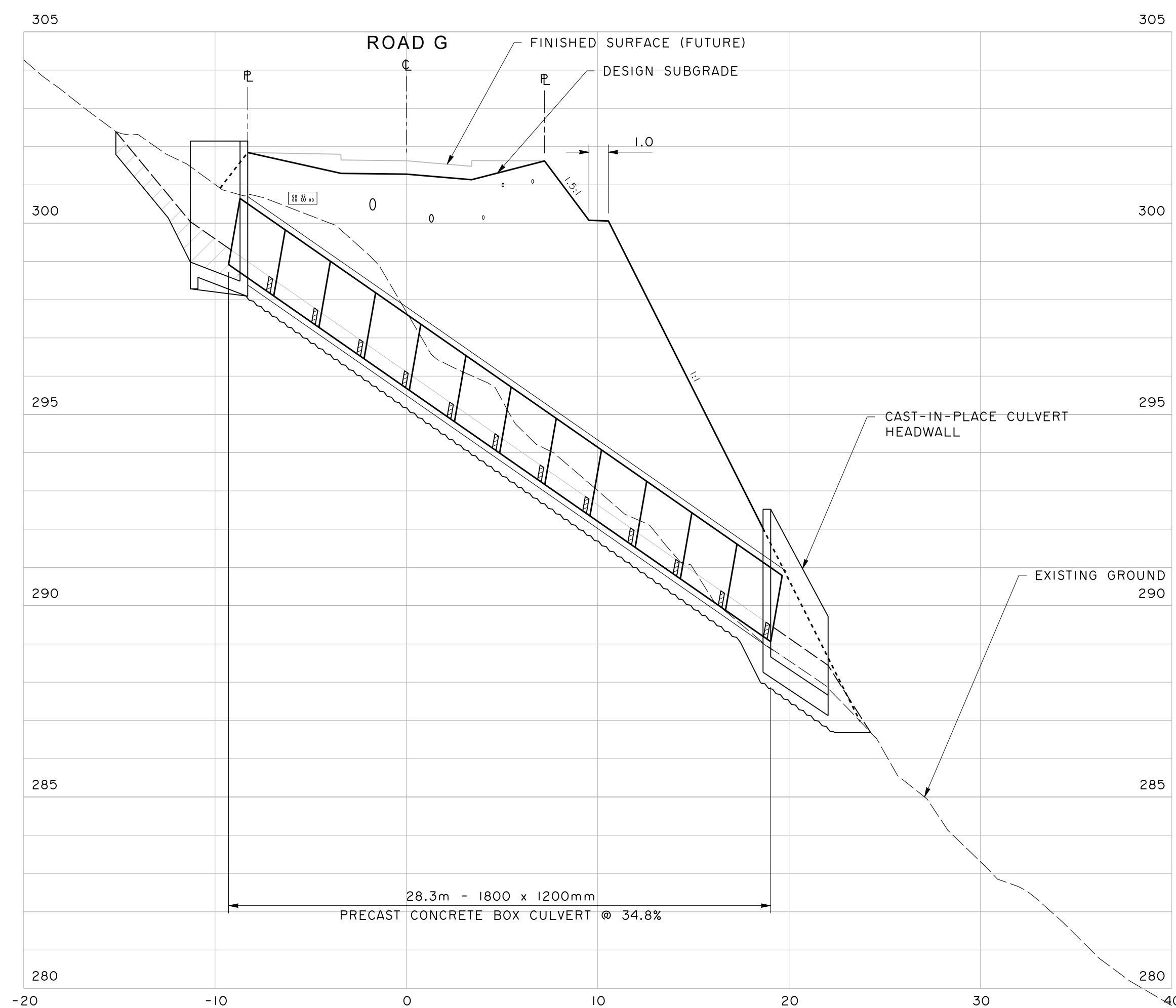
PLAN - CAVE CREEK EAST

SCALE 1:200



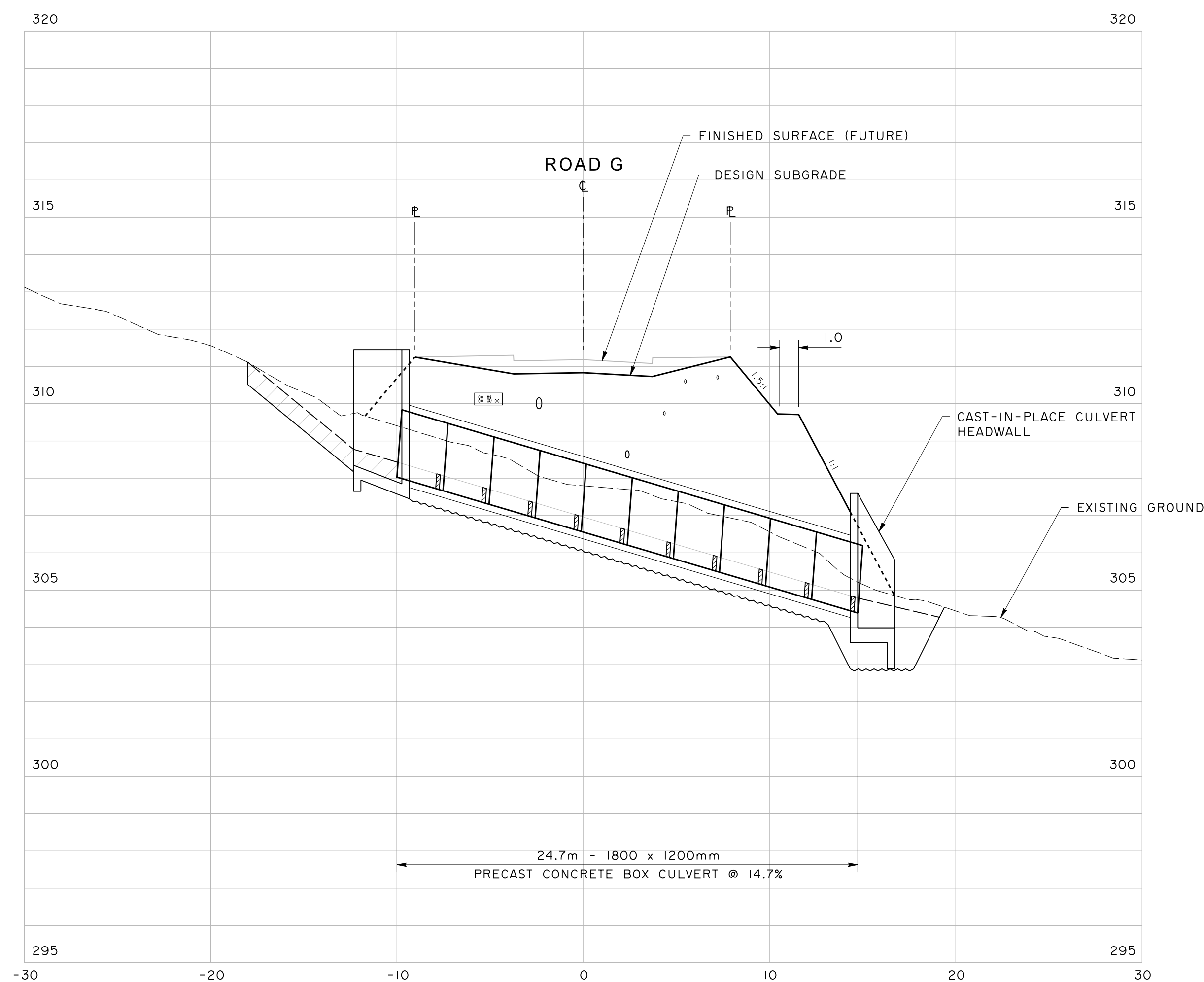
PLAN - CAVE CREEK FAR EAST

SCALE 1:200



PROFILE - CAVE CREEK EAST

SCALE 1:200H/1:100V



PROFILE - CAVE CREEK FAR EAST

SCALE 1:200H/1:100V

NO.	REVISION	DATE	BY
1	ROAD CLEARING DP SUBMISSION	16-05-20	JM
DESIGNED	JK	DRAWN	JM
SCALE	AS SHOWN	DATE	MAY 2016

BRITISH PACIFIC  
PROPERTIES LTD

RODGERS CREEK  
DEVELOPMENT

AREA 6

CULVERT CROSSING

CAVE CREEKS  
ROAD G

DRAWING NO.	REV.
C-12	1