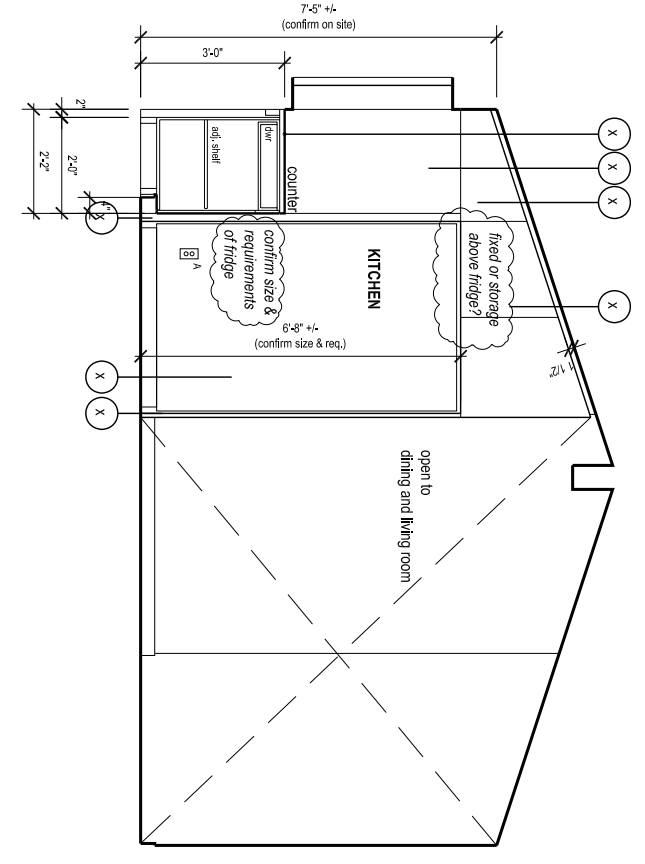
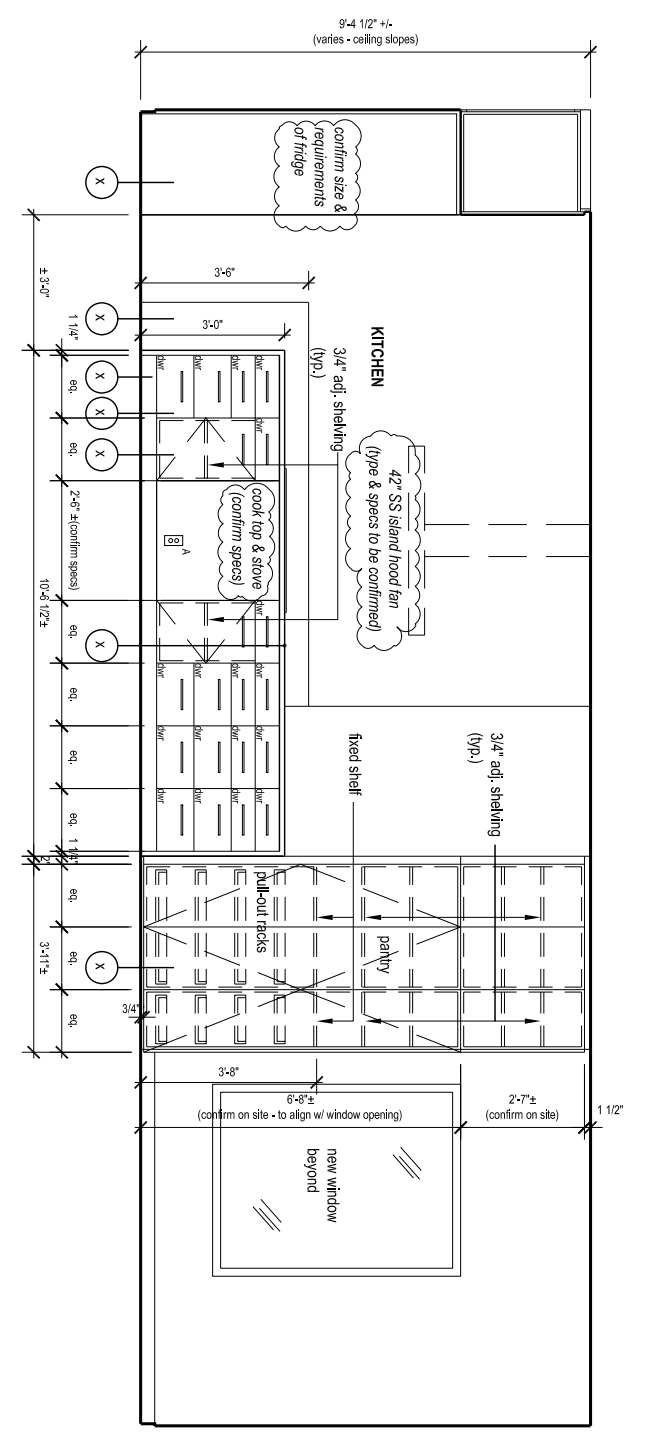


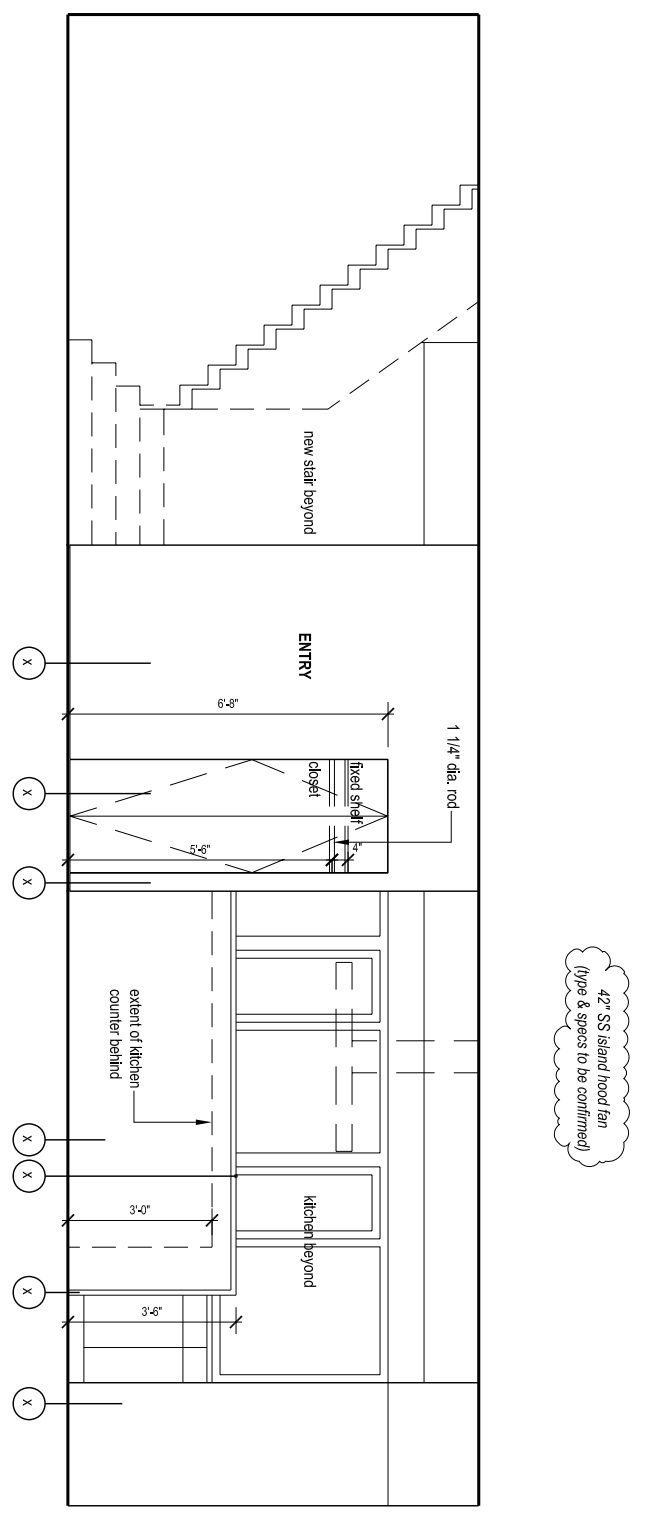
1 KITCHEN/DINING/LIVING looking xx  
3/8" = 1'-0"



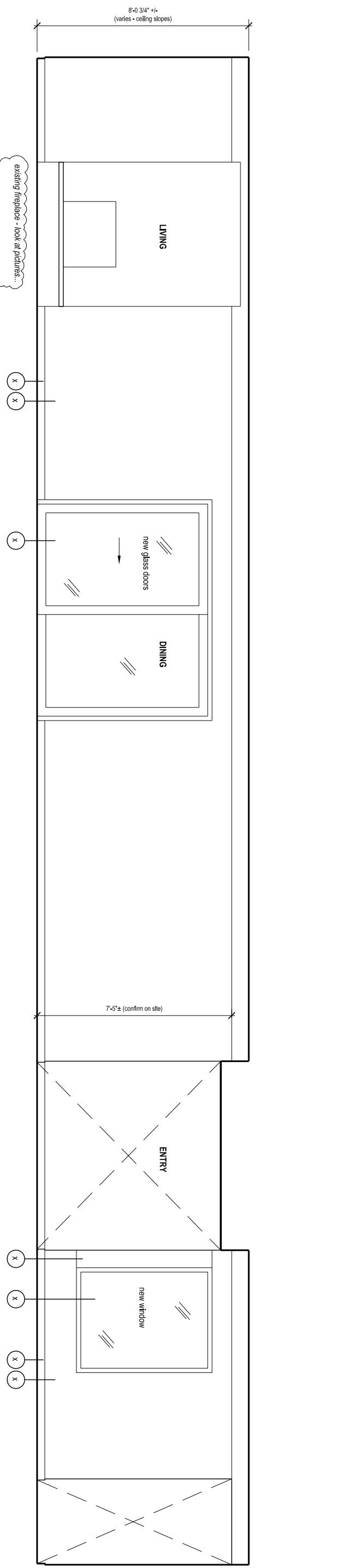
2 KITCHEN looking xx  
3/8" = 1'-0"



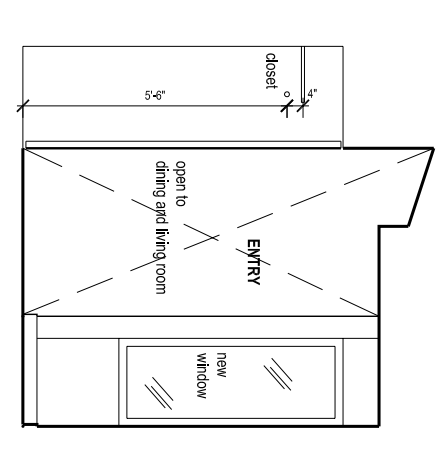
3 KITCHEN looking xx  
3/8" = 1'-0"



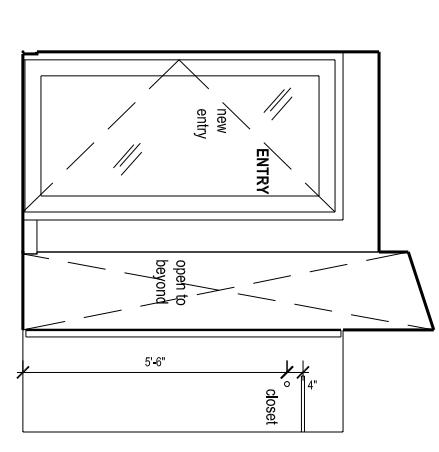
4 ENTRY looking xx  
3/8" = 1'-0"



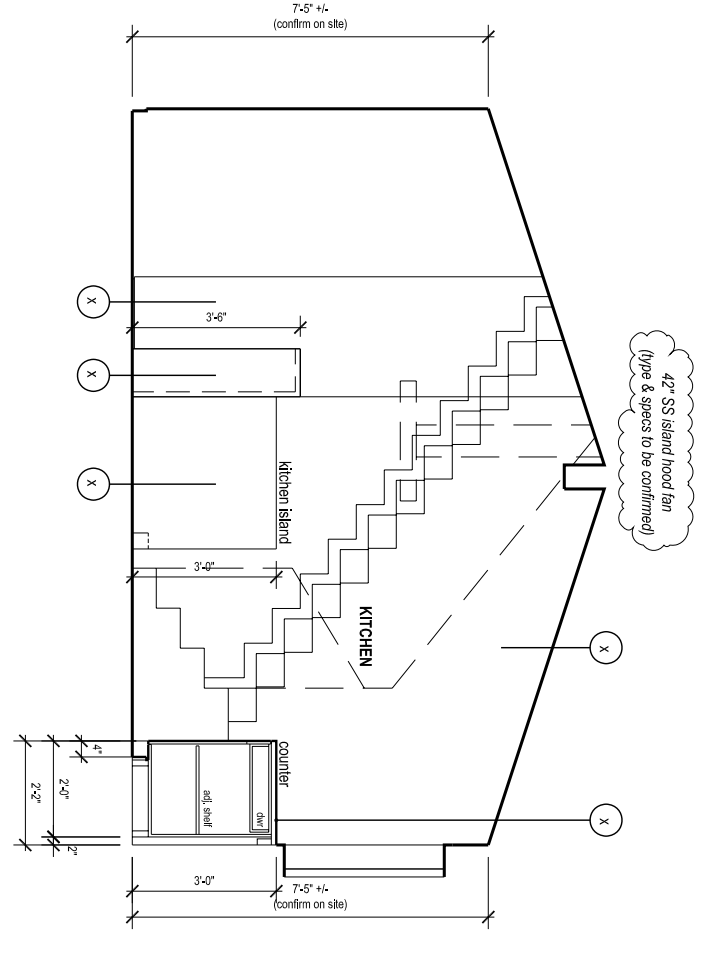
5 LIVING/DINING/ENTRY looking xx  
3/8" = 1'-0"



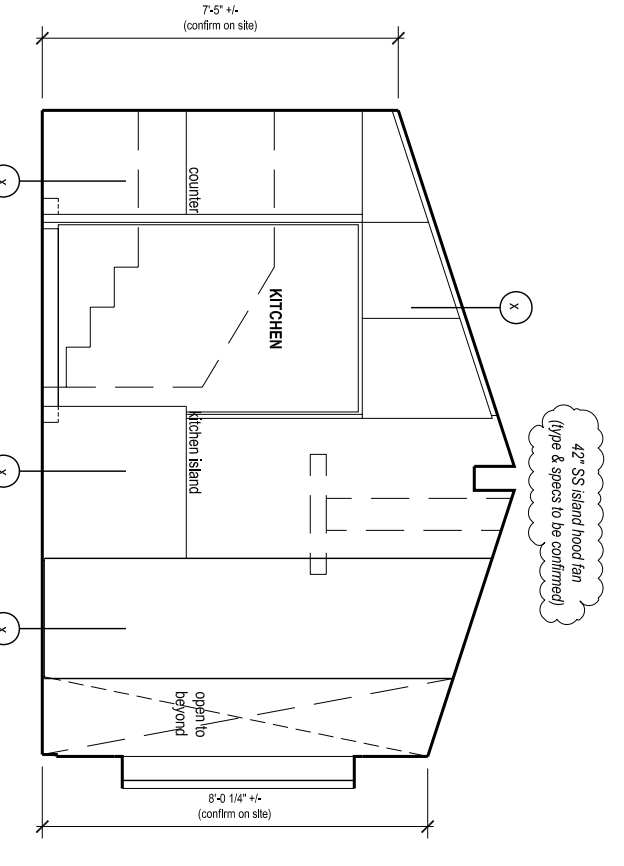
6 ENTRY looking xx  
3/8" = 1'-0"



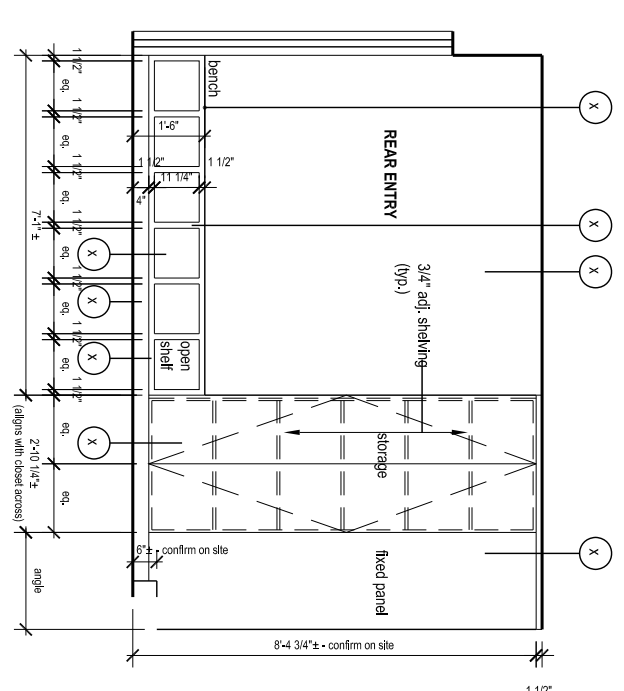
7 ENTRY looking xx  
3/8" = 1'-0"



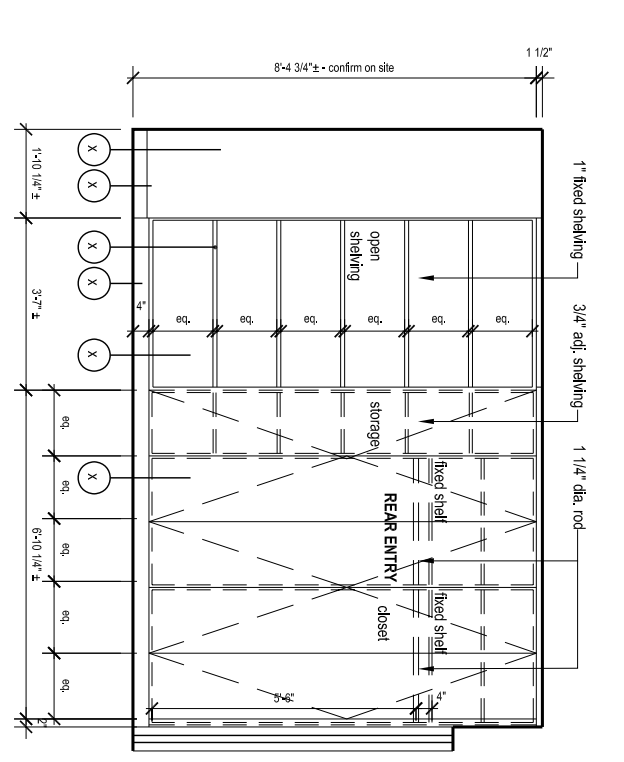
8 KITCHEN looking xx  
3/8" = 1'-0"



9 KITCHEN looking xx  
3/8" = 1'-0"



10 REAR ENTRY looking xx  
3/8" = 1'-0"



11 REAR ENTRY looking xx  
3/8" = 1'-0"

**NEEDS TO BE REVISED**

NOTE: see floor schedule and finish schedule & outline millwork specifications for further information

- 1 solid core paint grade door
- 2 hollow core paint grade door
- 3 plastic laminate cabinetry
- 4 wood veneer cabinetry
- 5 math lacquer finish cabinetry
- 6 plastic laminate countertop
- 7 stone countertop (varies - see finish spec.)
- 8 gypsum wallboard w/ primed finish
- 9 painted MDF trim or panel (see detail)
- 10 painted MDF flush baseboard w/ primed finish
- 11 glass mosaic tile
- 12 ceramic tile
- 13 mirror
- 14 stainless steel
- 15 concrete
- 16 steel
- 17 interior paneling
- 18 steel columns - (see details)
- 19 metal hand rail - (see details)

Issued for bp

march 5, 2012