



REVISIONS AND ISSUES

NO.	DATE	DESCRIPTION
1	17-12-20	ISSUED FOR DP
2	18-5-7	ISSUED FOR DP FOR SUBDIVISION
3	18-5-22	ISSUED FOR DP

FOREST PRESERVATION/ENHANCEMENT AREAS:
 -EXISTING VEGETATION TO BE RETAINED TO MAXIMUM POSSIBLE EXTENT
 -DISTURBED EDGES TO BE RE-VEGETATED AND ENHANCED WITH NATIVE SPECIES
 -DISTURBED EDGES TO BE MONITORED BY DEVELOPER FOR INVASIVE SPECIES FOR 2 YEARS AFTER COMPLETION OF LANDSCAPING

EXTENT OF CLEARING FOR WETLAND
 CONSTRUCTED WETLANDS TO BE DEVELOPED WITH THE DISTRICT ENVIRONMENTAL COORDINATOR AND SARTORI ENVIRONMENTAL SERVICES

CREEK PRESERVATION/ENHANCEMENT AREAS:
 PLANTING TO BE APPROVED BY DWV ENVIRONMENTAL PROTECTION OFFICER

ALL MOUNTAIN PATH AND SECONDARY TRAIL ALIGNMENTS TO BE FINALIZED WITH DISTRICT STAFF ON SITE

EXTENT OF REMEDIATION, 3m BEYOND CIVIL EXTENT OF DISTURBANCE.

EXTENT OF CUT/FILL, REFER TO CIVIL TYP.

PROJECT
RODGERS CREEK AREA 5

DRAWING TITLE
MATERIALS PLAN

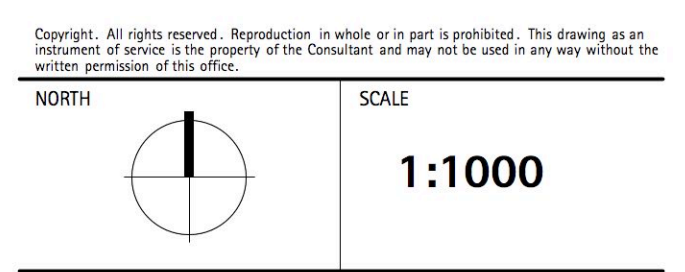


LEGEND

①	STREETSCAPE
②	LOT AREA
③	FOREST PROTECTED AREA
④	FOREST ENHANCEMENT AREA
⑤	RIPARIAN PROTECTED AREA
⑥	RIPARIAN ENHANCEMENT AREA
⑦	FOREST MANAGEMENT COVENANT
—	MOUNTAIN PATH
- - -	PROPERTY LINE

PAVING LEGEND

KEY	DESCRIPTION
P1	Lower Mountain Path per Rodgers Creek Standard Asphalt
P2	Mountain Path Bridge (L3.01) Timber
P3	Secondary Trail per Rodgers Creek Standard Granular with organic binder
P4	Play Area with Natural Timber Play Equipment



PROJECT NO.	17090
DATE	2018/05/02
FILE NAME	17090 BPP Area 5 PLAN.vwx
PLOTTED	18-5-22
DRAWN	MT
REVIEWED	JW

L1.05