



**FIRESMART:** Landscaping within 10m of buildings and structures to consist of a low density of fire-resistant plants and shrubs with limited woody debris & mulch, as per FireSmart Canada guidelines.



**COMMUNITY AMENITY:** labyrinth paving pattern for meditation & exercise.

**STREET TREES:** Nyssa sylvatica and Maples which have strong branches and taproot, are drought & wet tolerant.

**CONNECTION TO THE EXISTING TRAILS & PARK SYSTEM** that have easy-to-maintain native plantings.



**FRONT ENTRY** has mailbox kiosk with pullout parking area, and **STONE MONUMENT** for a welcoming entrance to this community.

**ECOSYSTEM MANAGEMENT** with native plant palettes, biofiltration swales, and terracing of the local soil/substrate materials.



**BUILDABLE AREA**

**FRONT YARDS** with large welcoming entries that have a zen-quality, with water feature or art feature.

**BACK YARDS** with private patios overlooking the native landscape, and flexible spaces for optional outdoor spa, food gardening, outdoor dining, and/or tree fort.



**SITE LIGHTING**

**CONNECTION TO THE EXISTING TRAILS & PARK SYSTEM** that have easy-to-maintain native plantings.



THESE DOCUMENTS, AND THE INFORMATION CONTAINED IN THESE DOCUMENTS, ARE THE SOLE PROPERTY OF ZALE DESIGN AND MAY NOT BE REPRODUCED OR SUBMITTED TO OUTSIDE PARTIES WITHOUT THE EXPRESSED WRITTEN CONSENT OF ZALE DESIGN. THE DOCUMENTS, AND THE INFORMATION CONTAINED IN THESE DOCUMENTS, SHALL NOT BE USED FOR ANY PURPOSE OTHER THAN FOR THE CONSTRUCTION OF THE REFERENCED PROJECT. ANY OTHER USE, REUSE OR MODIFICATION OF THE DOCUMENTS WITHOUT THE CONSULTANT'S PRIOR WRITTEN CONSENT WILL BE AT THE RECIPIENT'S SOLE RISK AND WITHOUT LIABILITY OR LEGAL EXPOSURE TO THE CONSULTANT.

Jan 14.22	For DP Resubmission
Dec 10.21	For Client Review
DATE	DESCRIPTION

REVISIONS	
NORTH	

WENTWORTH COLLINGWOOD  
WEST VANCOUVER, BC

PROJECT	
SCALE	1:500
DRAWN BY	KZ
PROJECT NO.	21-05

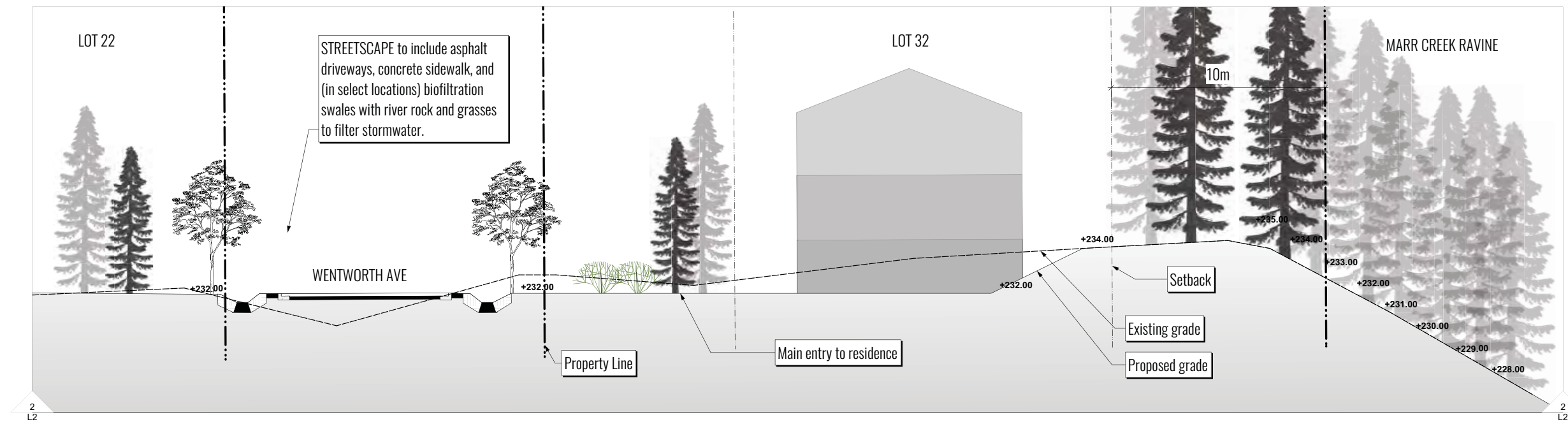
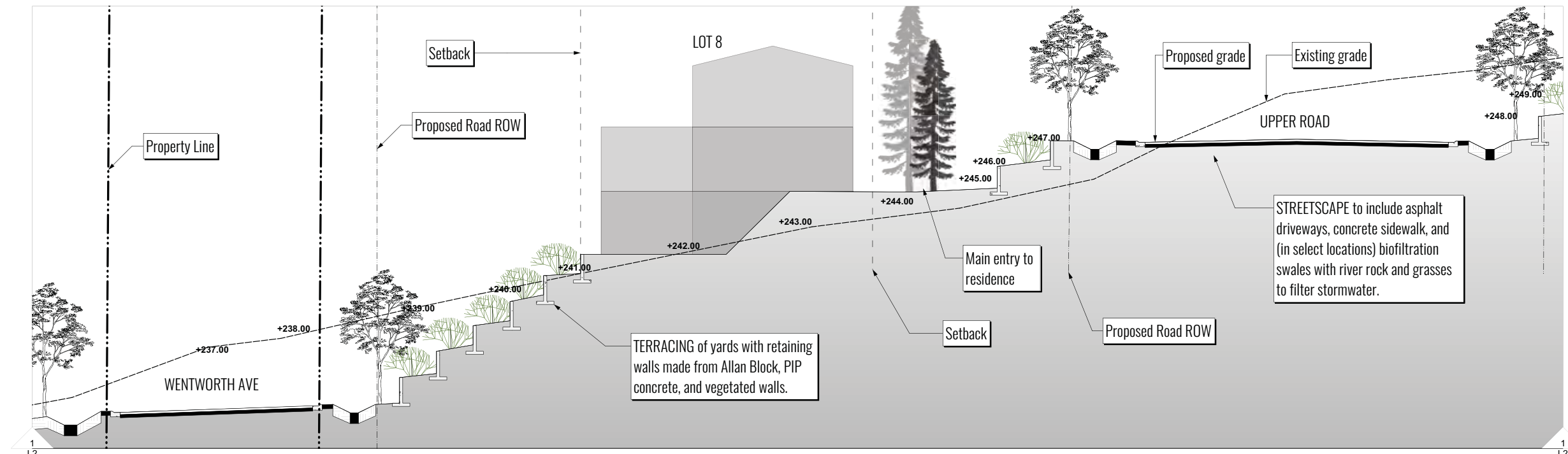
DRAWING  
**SCHEMATIC  
LANDSCAPE PLAN**

L1

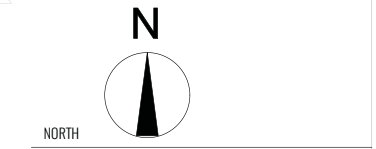


THESE DOCUMENTS, AND THE INFORMATION CONTAINED IN THESE DOCUMENTS, ARE THE SOLE PROPERTY OF ZALE DESIGN AND MAY NOT BE REPRODUCED OR SUBMITTED TO OUTSIDE PARTIES WITHOUT THE EXPRESSED WRITTEN CONSENT OF ZALE DESIGN. THE DOCUMENTS AND THE INFORMATION CONTAINED IN THESE DOCUMENTS SHALL NOT BE USED FOR ANY PURPOSE OTHER THAN FOR THE CONSTRUCTION OF THE REFERENCED PROJECT. ANY OTHER USE, REUSE, OR MODIFICATION OF THE DOCUMENTS WITHOUT THE CONSULTANT'S PRIOR WRITTEN CONSENT WILL BE AT THE RECIPIENT'S SOLE RISK AND WITHOUT LIABILITY OR LEGAL EXPOSURE TO THE CONSULTANT.

**A HOME IN THE FOREST**



DATE	DESCRIPTION
Jan 14.22	For DP Resubmission
Dec 10.21	For Client Review



WENTWORTH COLLINGWOOD  
WEST VANCOUVER, BC

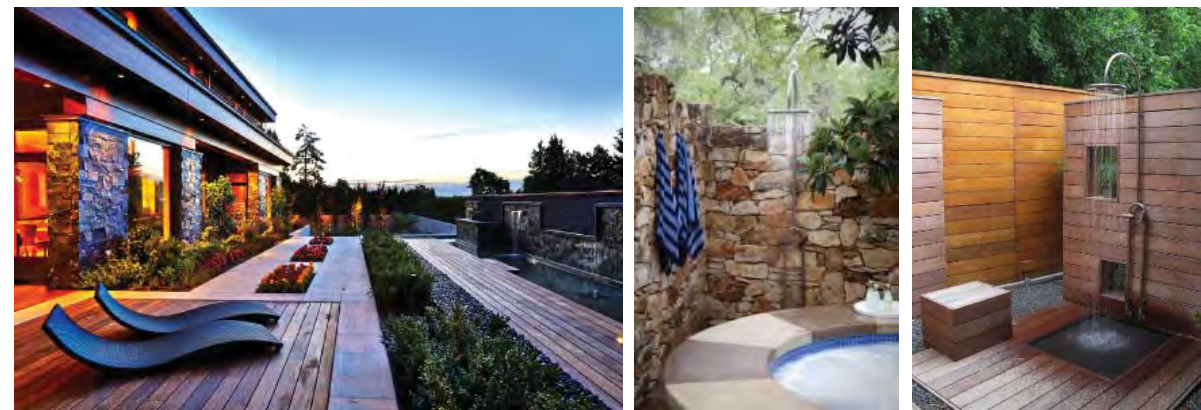
PROJECT  
SCALE 1:100  
DRAWN BY KZ  
PROJECT NO. 21-05

DRAWING  
**SCHEMATIC SECTIONS**  
L2

OUTDOOR KITCHEN, LIVING, AND PLAYING - patios, fire pit, gazebo



PRIVATE SPA AREA



THE OVERLOOK



GREEN ROOF



NATURAL MATERIALS - boulders, river rock, local wood



AMENITIES AT CUL-DE-SAC - speciality paving pattern

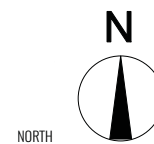


PLANT PALETTE



THESE DOCUMENTS, AND THE INFORMATION CONTAINED IN THESE DOCUMENTS, ARE THE SOLE PROPERTY OF ZALE DESIGN AND MAY NOT BE REPRODUCED OR SUBMITTED TO OUTSIDE PARTIES WITHOUT THE EXPRESSED WRITTEN CONSENT OF ZALE DESIGN. THE DOCUMENTS, AND THE INFORMATION CONTAINED IN THESE DOCUMENTS, SHALL NOT BE USED FOR ANY PURPOSE OTHER THAN FOR THE CONSTRUCTION OF THE REFERENCED PROJECT. ANY OTHER USE, REUSE, OR MODIFICATION OF THE DOCUMENTS WITHOUT THE CONSULTANT'S PRIOR WRITTEN CONSENT WILL BE AT THE RECIPIENT'S SOLE RISK AND WITHOUT LIABILITY OR LEGAL EXPOSURE TO THE CONSULTANT.

Jan 14.22	For DP Resubmission
Dec 10.21	For Client Review
DATE	DESCRIPTION
REVISIONS	



WENTWORTH COLLINGWOOD  
WEST VANCOUVER, BC

PROJECT	
SCALE	
DRAWN BY	KZ
PROJECT NO.	21-05

DRAWING  
LANDSCAPE  
MATERIALS &  
FURNISHINGS

L3

## LANDSCAPE RATIONALE

The landscape approach for the Wentworth Project is to create a cohesive neighbourhood and a modern home within the West Coast forest environment.

## NEIGHBOURHOOD LANDSCAPE DESIGN

At the entry to the neighbourhood is a welcoming sign, sculpted from a local rock material, which appears to be carved out of a boulder on the hillside. Dense clusters of coniferous trees are dotted around the neighbourhood, with understory of native salal and mahonia shrubs as well as a variety of ferns. The streetscape is bordered by rows of Maple trees that are interspersed with 'wayfinding' trees with bright fall colors and interesting canopies. The cul-de-sac on both streets is designed to be an amenity area and may contain a basketball hoop, a bench, and/or a patterned surface material such as a stamped concrete design. The site provides three walking connections to the existing park system. Each cul-de-sac has a pedestrian trail that leads to the Marr Creek Ravine area. In addition to street lighting, the pedestrian trail allows for a solar-powered bollard lighting fixture.

## A HOME IN THE FOREST

Each building has a welcoming front yard with a signature water feature or art piece. The materials at the home entry landscape have a Zen character, with river rock, large boulders, native plants, and flowering seasonal shrubs. The back yard is nestled into the hillside and has an outdoor kitchen/living room, optional outdoor spa or tree fort, and terraced planted areas. Depending on each site condition, terraces are made from Allan Block walls, poured-in-place concrete walls, or vegetated walls. Each yard is designed to maximize privacy, views, and connection to the landscape.

## FIRESMART

To address the Wildfire hazard Policy NE 1, a full planting plan with species and locations of plants that are FireSmart will be developed after a full site grading plan with buildings & structures and walls is available. The landscaping within 10 meters of the structures will be of low density planting of fire resistant plants & shrubs, with limited woody debris and mulch that provides potential places for fires to start. The use of cedar, juniper, pine, tall grass, spruce, and lawn will be limited or fully avoided. The planting plan would include xeriscaping with river rock, no invasive plantings, no fruit trees, and including plants from the FireSmart Canada guidelines list.