



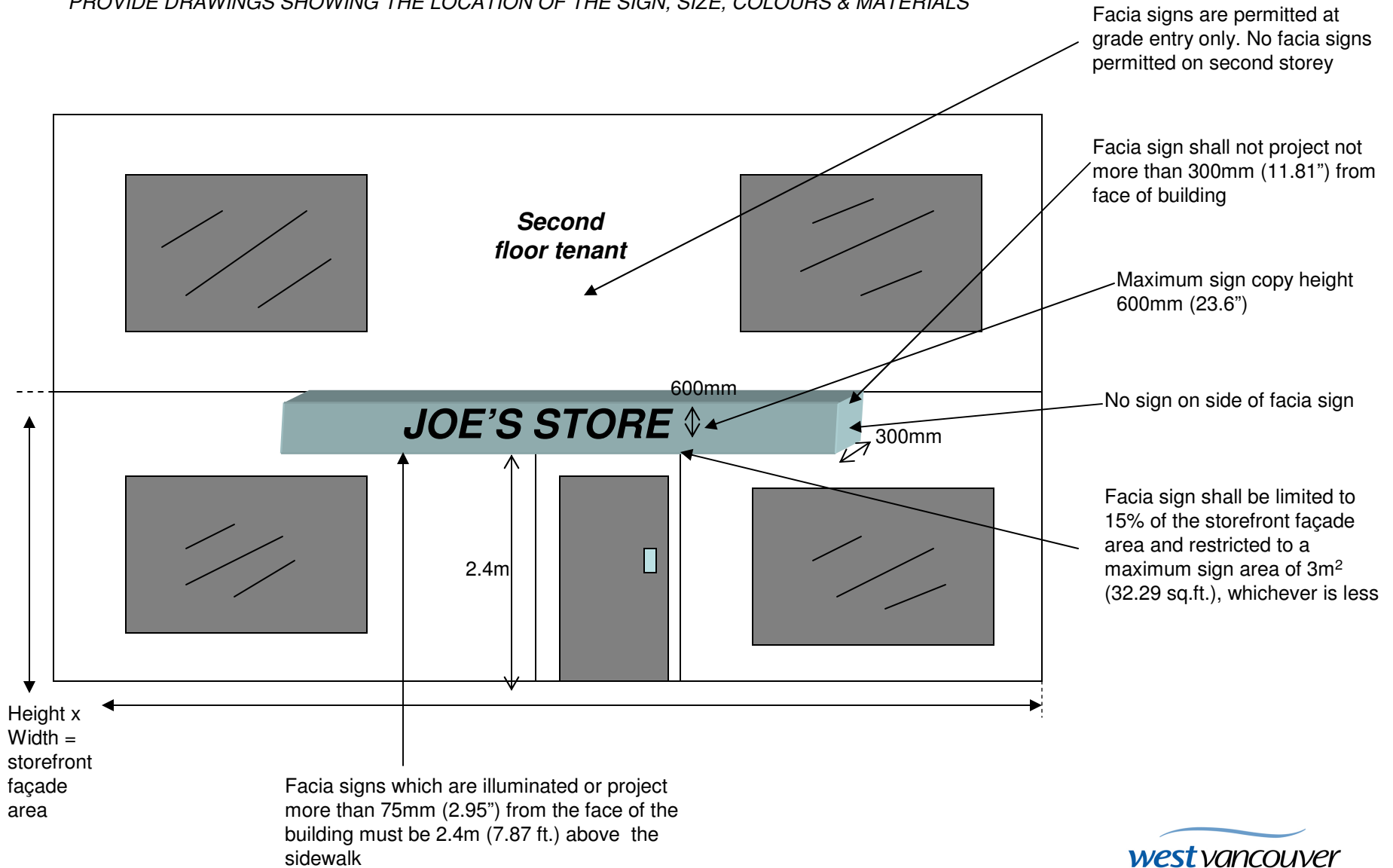
## Ambleside Guidelines & Regulations related to Facia Signs

---

Sep, 2011

# Ambleside Guidelines & Regulations related to Facia Signs

PROVIDE DRAWINGS SHOWING THE LOCATION OF THE SIGN, SIZE, COLOURS & MATERIALS



## ***Ambleside Guidelines & Regulations related to Facia Signs***

---

- **General Facia Sign Regulations:**

- Facia signs are permitted in all areas of the Municipality, other than residential areas.
- Facia signs shall project no further than 300mm (11.81”) from the building to which they are attached and shall not project above the face of the building.
- Illuminated facia signs or signs that project more than 75mm (2.95”) from the face of the building shall obtain a minimum sign height of 2.4m (7.87 ft.).
- Facia signs are limited to 15% of the façade area and restricted to a maximum sign area of 3m<sup>2</sup> (32.29 sq.ft.) whichever is lesser.
- In no case shall the height of the copy area of a facia sign exceed 600mm (23.6”).
- Where a business premises consists of more than one department with a separate entrance to each additional department, an additional facia sign may be placed at each department entrance. The total sign area of the facia sign shall not exceed the maximum sign area allowable for one sign.
- Facia signs with a maximum sign area of .9 m<sup>2</sup> (9.68 sq.ft.) are permitted on apartment buildings, schools and churches, limited to the name and address of the building. Only one such facia sign is permitted per building.
- Facia signs are permitted only at grade entry of buildings.
- Roof signs, balcony signs and signs mounted or supported on the deck of a canopy are prohibited
- Any sign that obstructs any part of a doorway, balcony, or a window that would otherwise be capable of opening is prohibited.
- Any sign on the side of a facia sign is prohibited.
- Any second storey facia sign is prohibited.
- Signage design to be compatible with the building design and colour must complement the overall building scheme.
- Sign to be maintained and replaced or repaired when faded, damaged or discoloured.



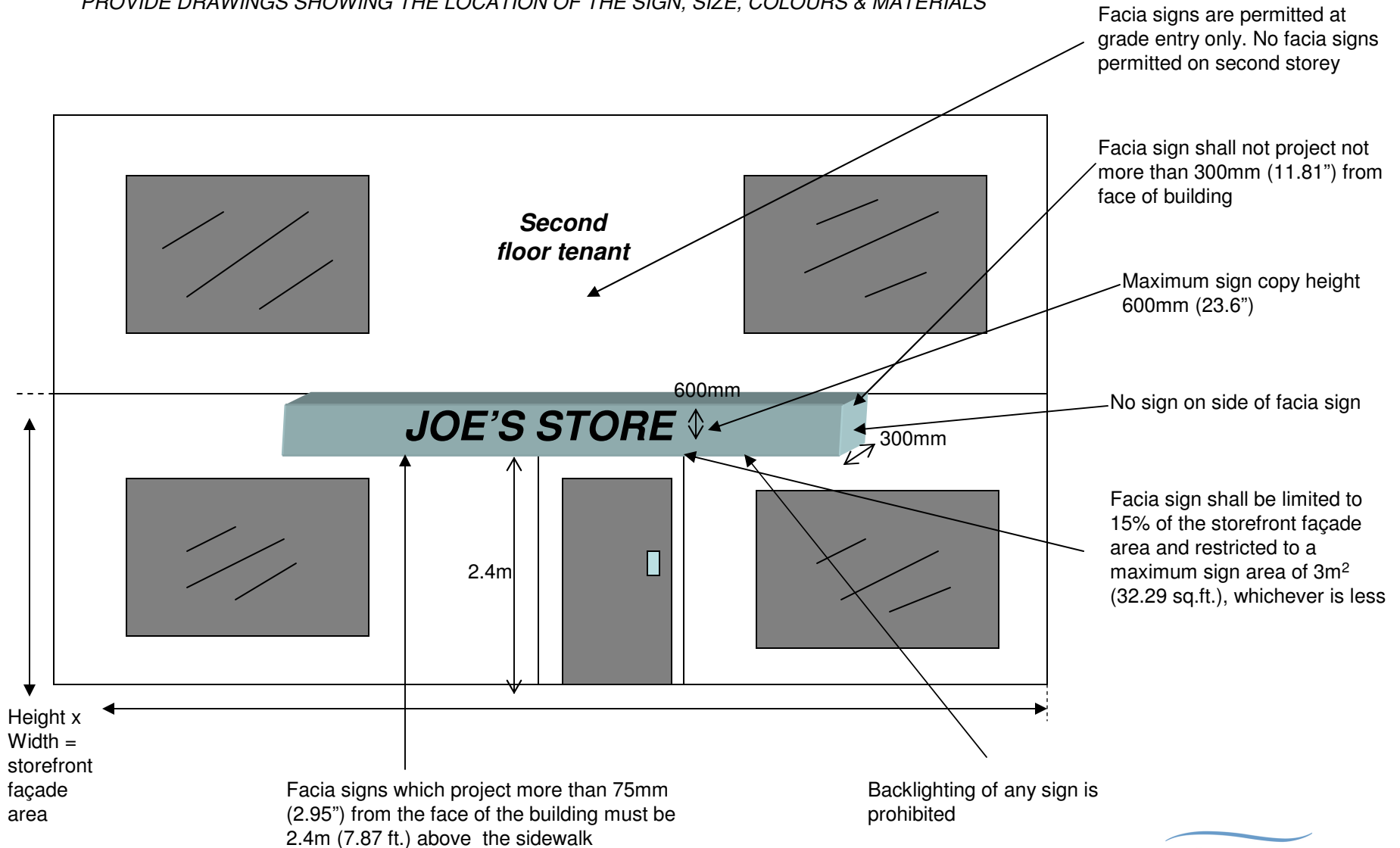
## Dundarave Guidelines & Regulations related to Facia Signs

---

Sep, 2011

# Dundarave Guidelines & Regulations related to Facia Signs

PROVIDE DRAWINGS SHOWING THE LOCATION OF THE SIGN, SIZE, COLOURS & MATERIALS



## ***Dundarave Guidelines & Regulations related to Facia Signs***

---

- **General Facia Sign Regulations:**

- Facia signs are permitted in all areas of the Municipality, other than residential areas.
- Facia signs shall project no further than 300mm (11.81”) from the building to which they are attached and shall not project above the face of the building.
- Facia signs that project more than 75mm (2.95”) from the face of the building shall obtain a minimum sign height of 2.4m (7.87 ft.).
- Facia signs are limited to 15% of the façade area and restricted to a maximum sign area of 3m<sup>2</sup> (32.29 sq.ft.) whichever is lesser.
- In no case shall the height of the copy area of a facia sign exceed 600mm (23.6”).
- Where a business premises consists of more than one department with a separate entrance to each additional department, an additional facia sign may be placed at each department entrance. The total sign area of the facia sign shall not exceed the maximum sign area allowable for one sign.
- Facia signs with a maximum sign area of .9 m<sup>2</sup> (9.68 sq.ft.) are permitted on apartment buildings, schools and churches, limited to the name and address of the building. Only one such facia sign is permitted per building.
- Facia signs are permitted only at grade entry of buildings.
- Roof signs, balcony signs and signs mounted or supported on the deck of a canopy are prohibited
- Any sign that obstructs any part of a doorway, balcony, or a window that would otherwise be capable of opening is prohibited.
- Any sign on the side of a facia sign is prohibited.
- Any second storey facia sign is prohibited.
- Signage design to be compatible with the building design and colour must complement the overall building scheme.
- Sign to be maintained and replaced or repaired when faded, damaged or discoloured.

- **Dundarave Village District:**

Backlighting of any sign is prohibited.



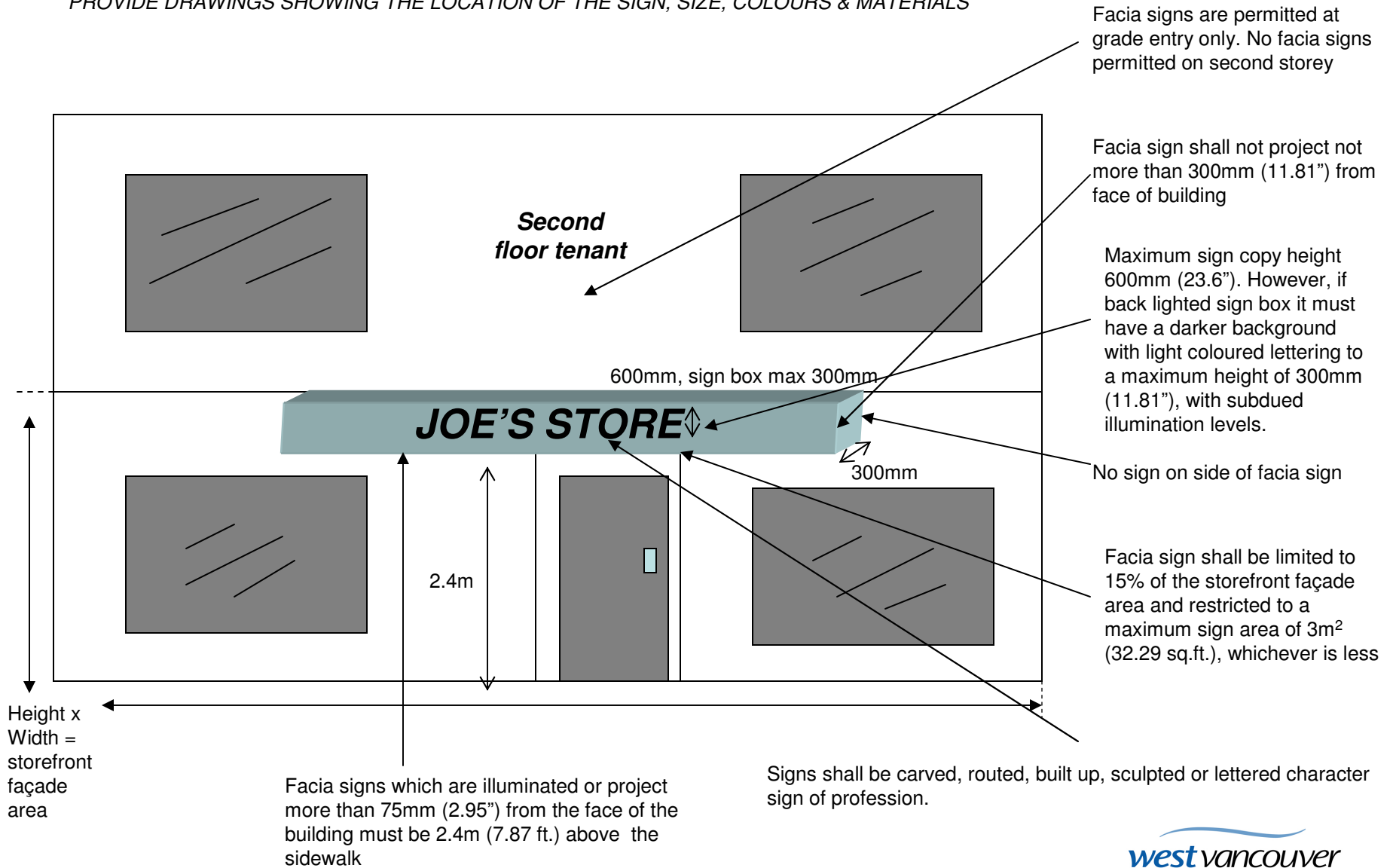
## Horseshoe Bay Guidelines & Regulations related to Facia Signs

---

Nov, 2010

# Horseshoe Bay Guidelines & Regulations related to Facia Signs

PROVIDE DRAWINGS SHOWING THE LOCATION OF THE SIGN, SIZE, COLOURS & MATERIALS



Facia signs are permitted at grade entry only. No facia signs permitted on second storey

Facia sign shall not project not more than 300mm (11.81") from face of building

Maximum sign copy height 600mm (23.6"). However, if back lighted sign box it must have a darker background with light coloured lettering to a maximum height of 300mm (11.81"), with subdued illumination levels.

No sign on side of facia sign

Facia sign shall be limited to 15% of the storefront façade area and restricted to a maximum sign area of 3m<sup>2</sup> (32.29 sq.ft.), whichever is less



# ***Horseshoe Bay Guidelines & Regulations related to Facia Signs***

---

- **General Facia Sign Regulations:**

- Facia signs are permitted in all areas of the Municipality, other than residential areas.
- Facia signs shall project no further than 300mm (11.81") from the building to which they are attached and shall not project above the face of the building.
- Illuminated facia signs or signs that project more than 75mm (2.95") from the face of the building shall obtain a minimum sign height of 2.4m (7.87 ft.).
- Facia signs are limited to 15% of the façade area and restricted to a maximum sign area of 3m<sup>2</sup> (32.29 sq.ft.) whichever is lesser.
- In no case shall the height of the copy area of a facia sign exceed 600mm (23.6").\*
- Where a business premises consists of more than one department with a separate entrance to each additional department, an additional facia sign may be placed at each department entrance. The total sign area of the facia sign shall not exceed the maximum sign area allowable for one sign.
- Facia signs with a maximum sign area of .9 m<sup>2</sup> (9.68 sq.ft.) are permitted on apartment buildings, schools and churches, limited to the name and address of the building. Only one such facia sign is permitted per building.
- Facia signs are permitted only at grade entry of buildings.
- Roof signs, balcony signs and signs mounted or supported on the deck of a canopy are prohibited
- Any sign that obstructs any part of a doorway, balcony, or a window that would otherwise be capable of opening is prohibited.
- Any sign on the side of a facia sign is prohibited.
- Any second storey facia sign is prohibited.
- Signage design to be compatible with the building design and colour must complement the overall building scheme.
- Sign to be maintained and replaced or repaired when faded, damaged or discoloured.

- **Horseshoe Bay Village District:**

- \* Facia Signs shall be carved, routed, built up, sculpted or lettered character sign of profession. Back lighted sign boxes have light coloured lettering; to a maximum of 300mm (11.81") letters, on a darker background, with subdued illumination levels.