

# Capilano Pacific Trail

Jenn Moller, Director of Engineering & Transportation Services

Sue Ketler, Director of Parks, Culture & Community Services

July 25, 2022

# Presentation Outline

1. Overview
2. Landslide Remediation and Permanent Trail Decommissioning
3. Sewer Infrastructure Reinstatement
4. Trail Realignment

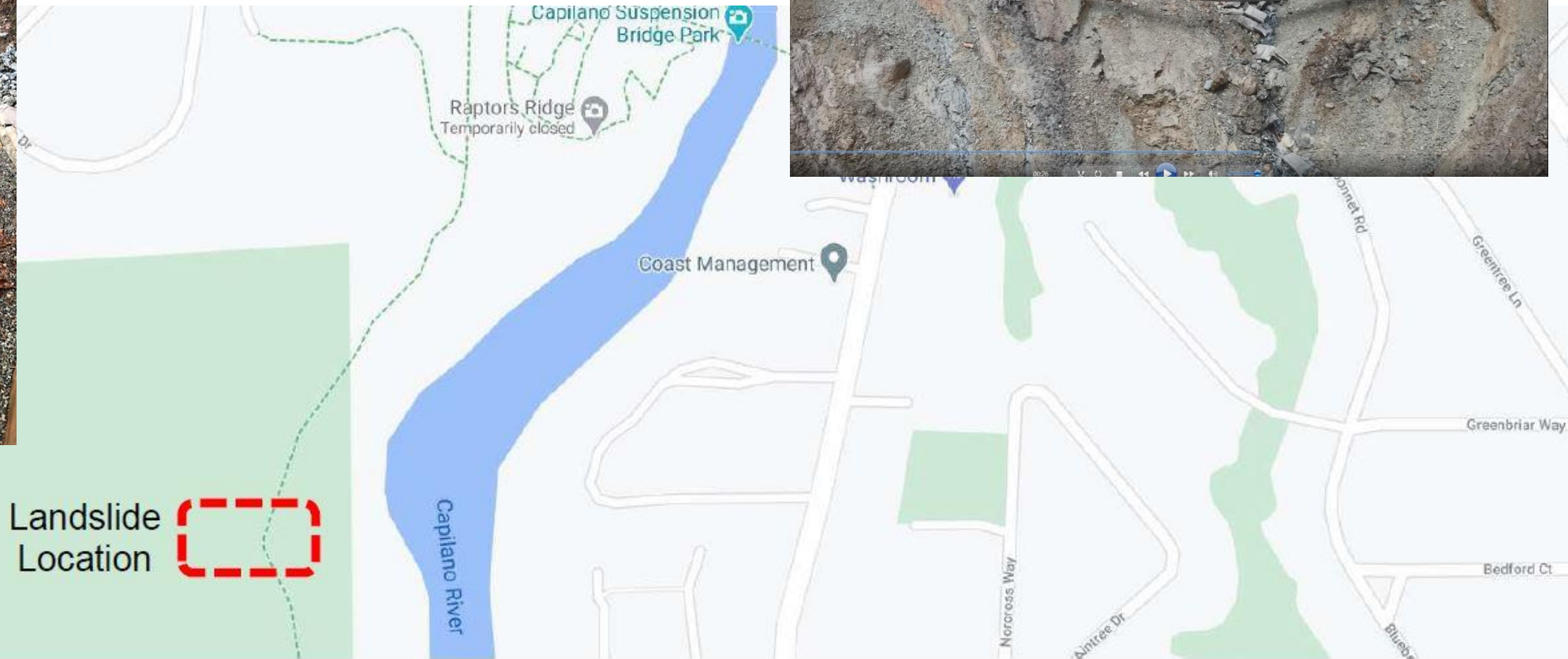
# 1 Overview

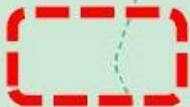
# Landslide

Initial Landslide – January 6

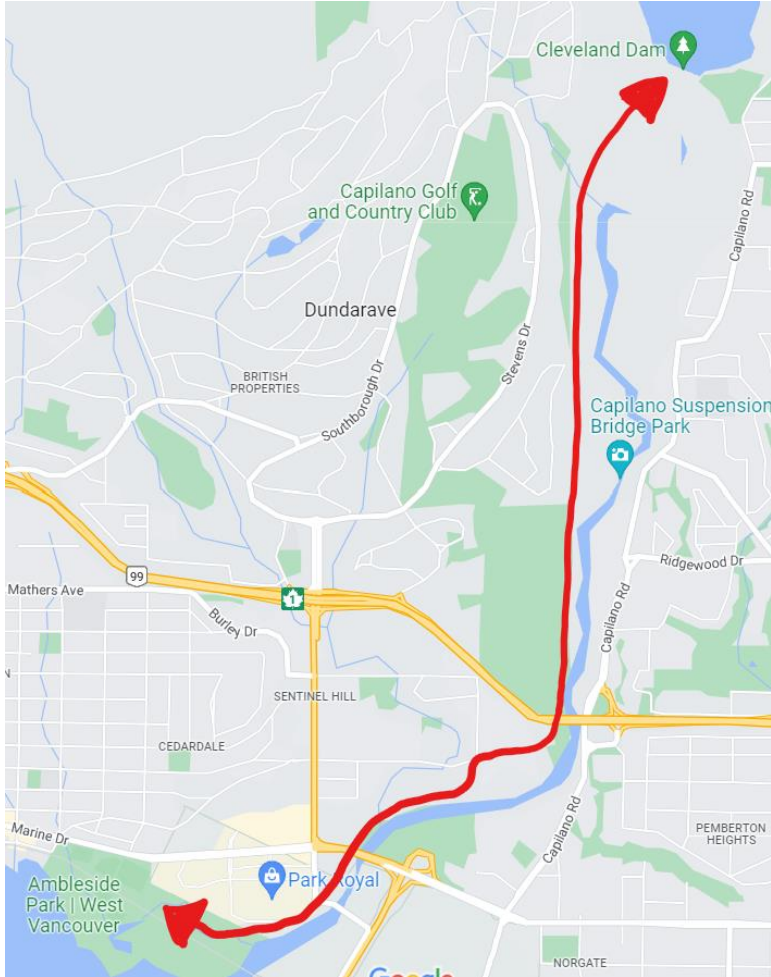


Subsequent Landslide – January 13



Landslide Location 

# Capilano Pacific Trail Routing



- major North-South connector trail that follows the Capilano River
- connects Ambleside Park to Capilano River Regional Park
- highly used recreational trail

# 2 Landslide Remediation and Permanent Trail Decommissioning



# Landslide Area Security



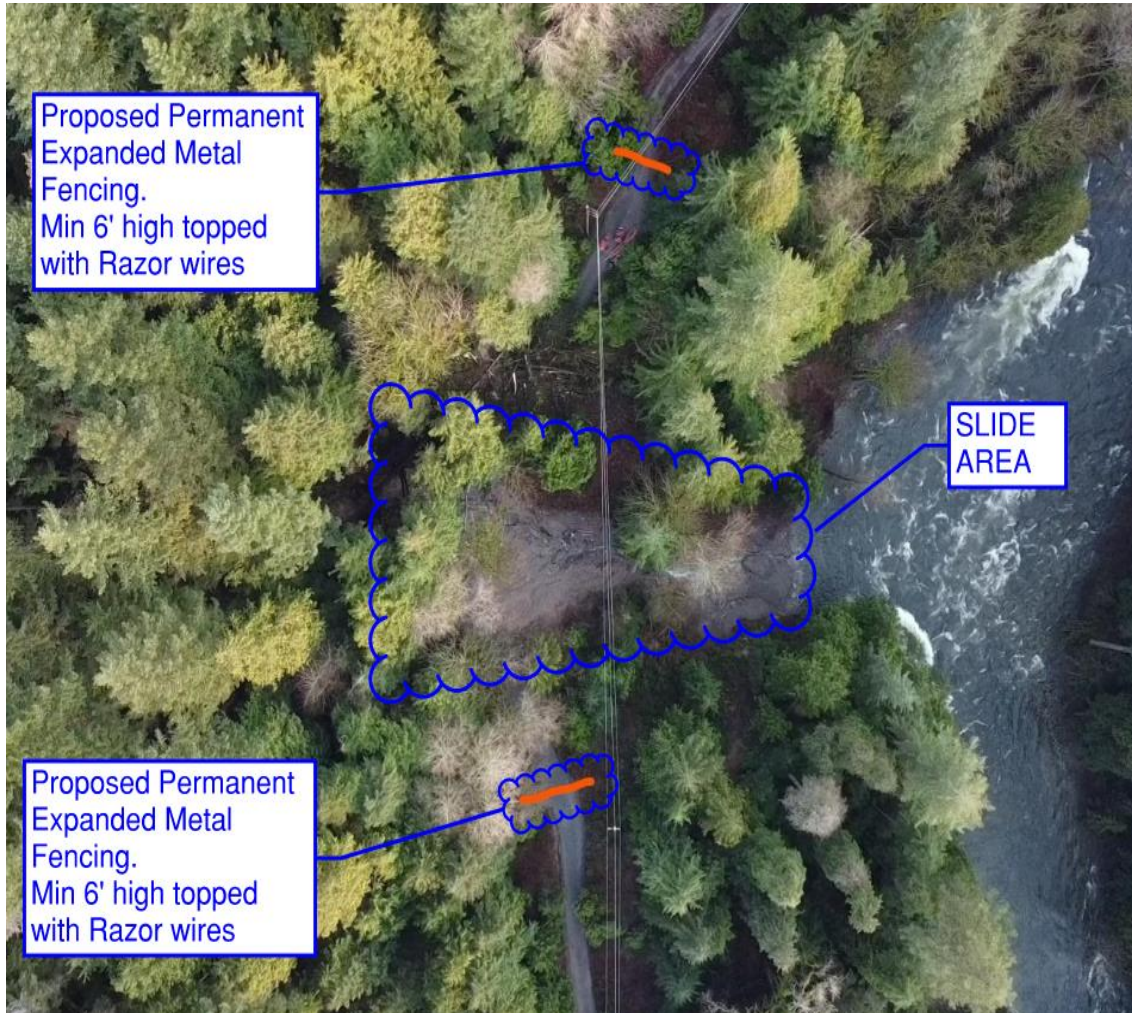


# Unpermitted Access & Public Trespass





# Existing Trail Decommissioning



the anticipated costs associated with the trail decommissioning are:

- \$30,000 for permanent fencing at the north and south sides of the landslide area, including main access gate and permanent signage
- \$65,000 for decommissioning of the existing sewer and hydroseeding the slide area
- it is proposed that this work be funded by through a combination of the Weather Related Incidents Reserve for the trail decommissioning and the Sewer Utility for the sewer decommissioning as described above

# Staff Recommendation

THAT

1. staff be directed to immediately initiate decommissioning and permanently securing the landslide area and section of the Trail contained therein, by installing permanent fencing and signage as described in the report;
2. staff fund the Trail decommissioning and securing of the landslide area through a combination of the Weather Related Incidents Reserve for the Trail decommissioning at an estimated cost of \$30,000, and the Sewer Utility for the sewer decommissioning at an estimated cost of \$65,000;
3. the existing signage and temporary fencing measures as described within the report remain in place to deter public trespass until permanent fencing is installed; and
4. staff continue to monitor the landslide area and temporary sewerage system in accordance with the recommendations of a qualified professional as described in the report.

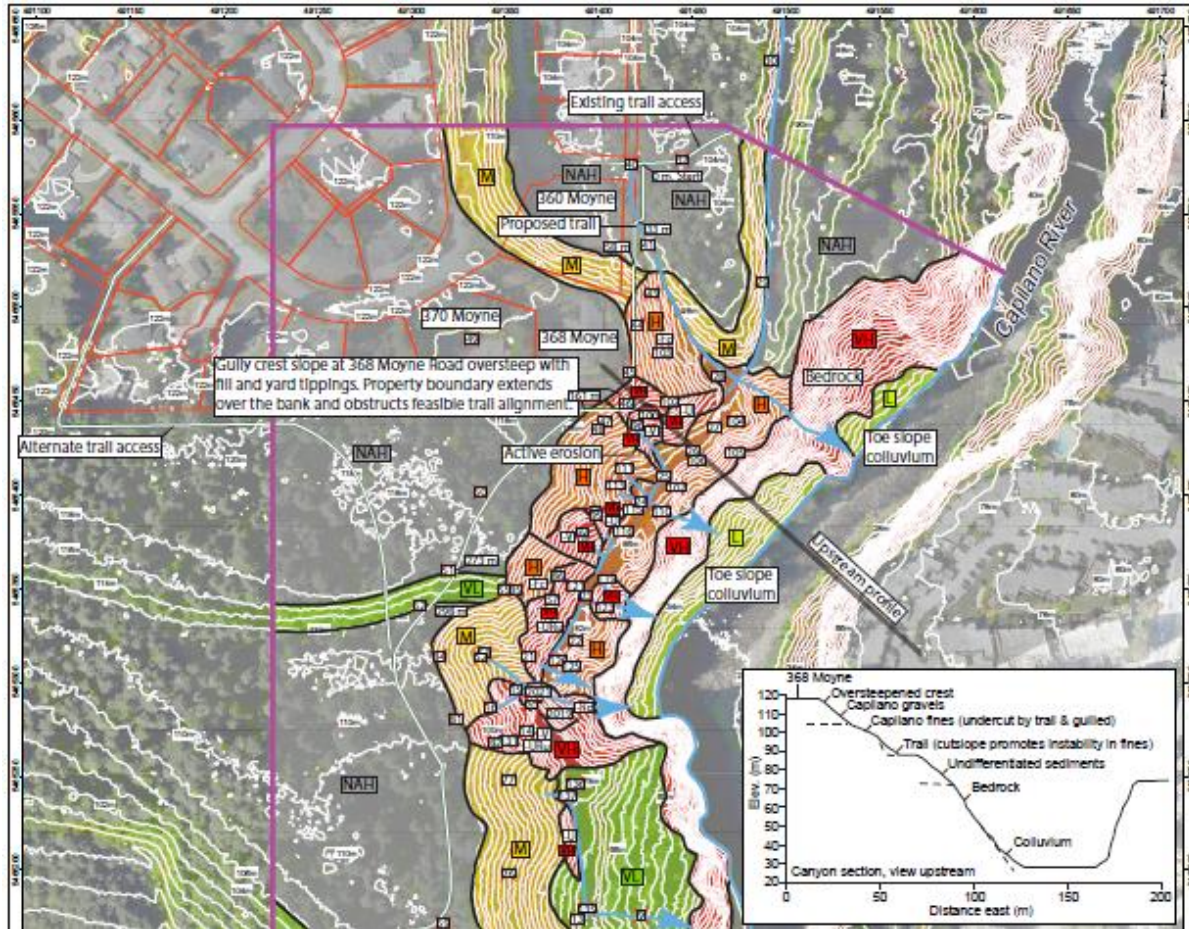
# 3

## Sewer Infrastructure Reinstatement

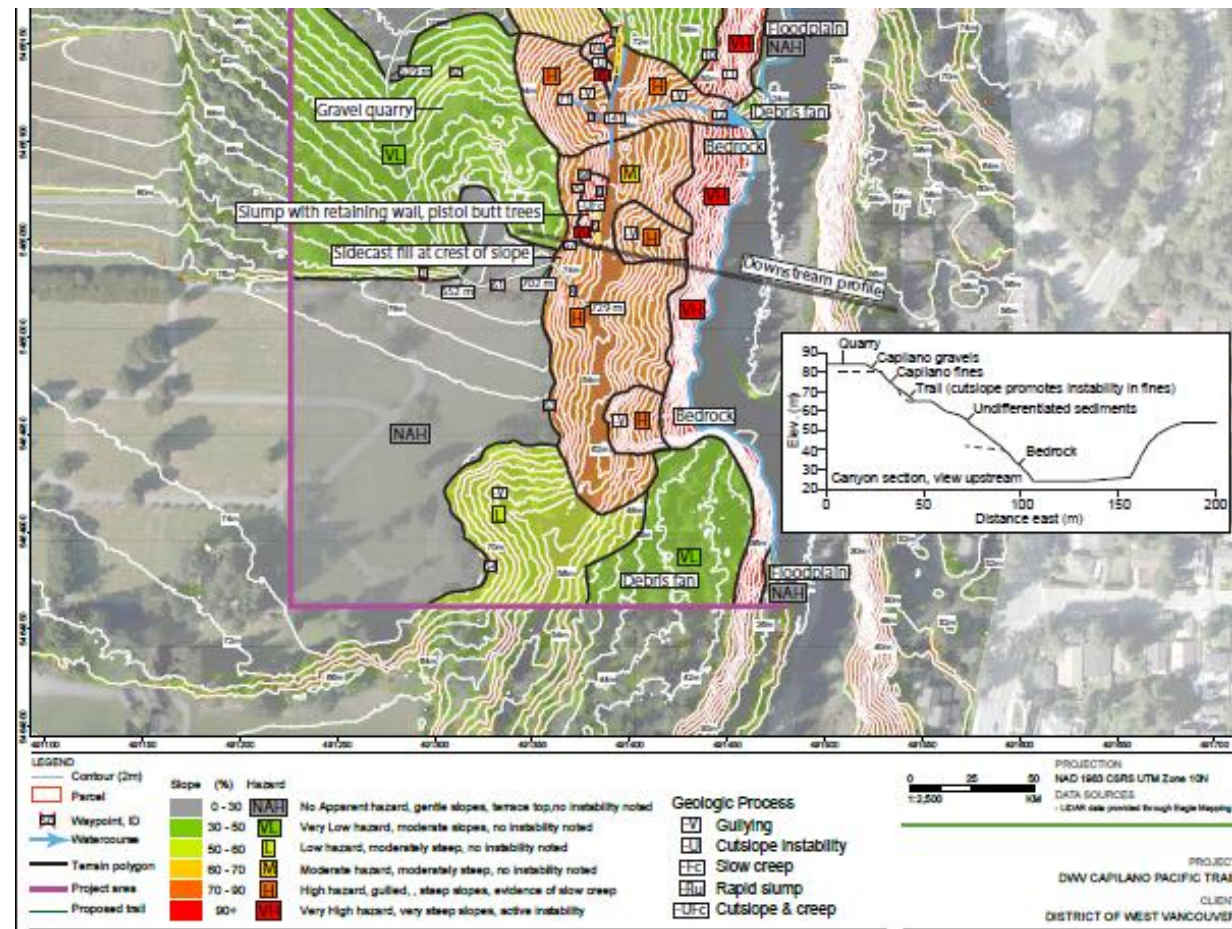


# Geohazard Mapping

## Capilano River Escarpment Map 1/2



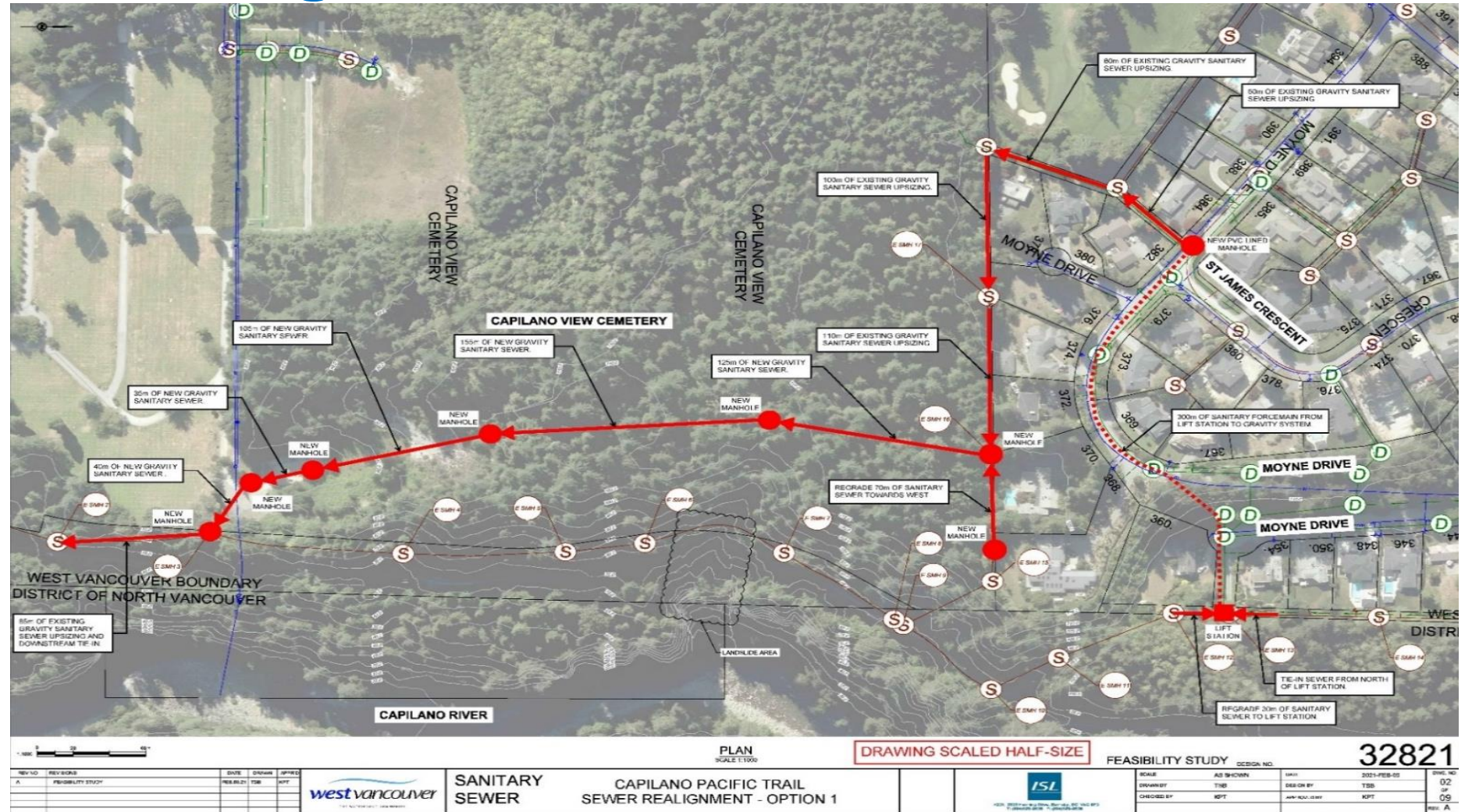
## Capilano River Escarpment Map 2/2





# Sewer Network Configuration

- Class C estimate - \$4,500,000
- funded by Sewer Utility
- funded as part of existing 2022 budget

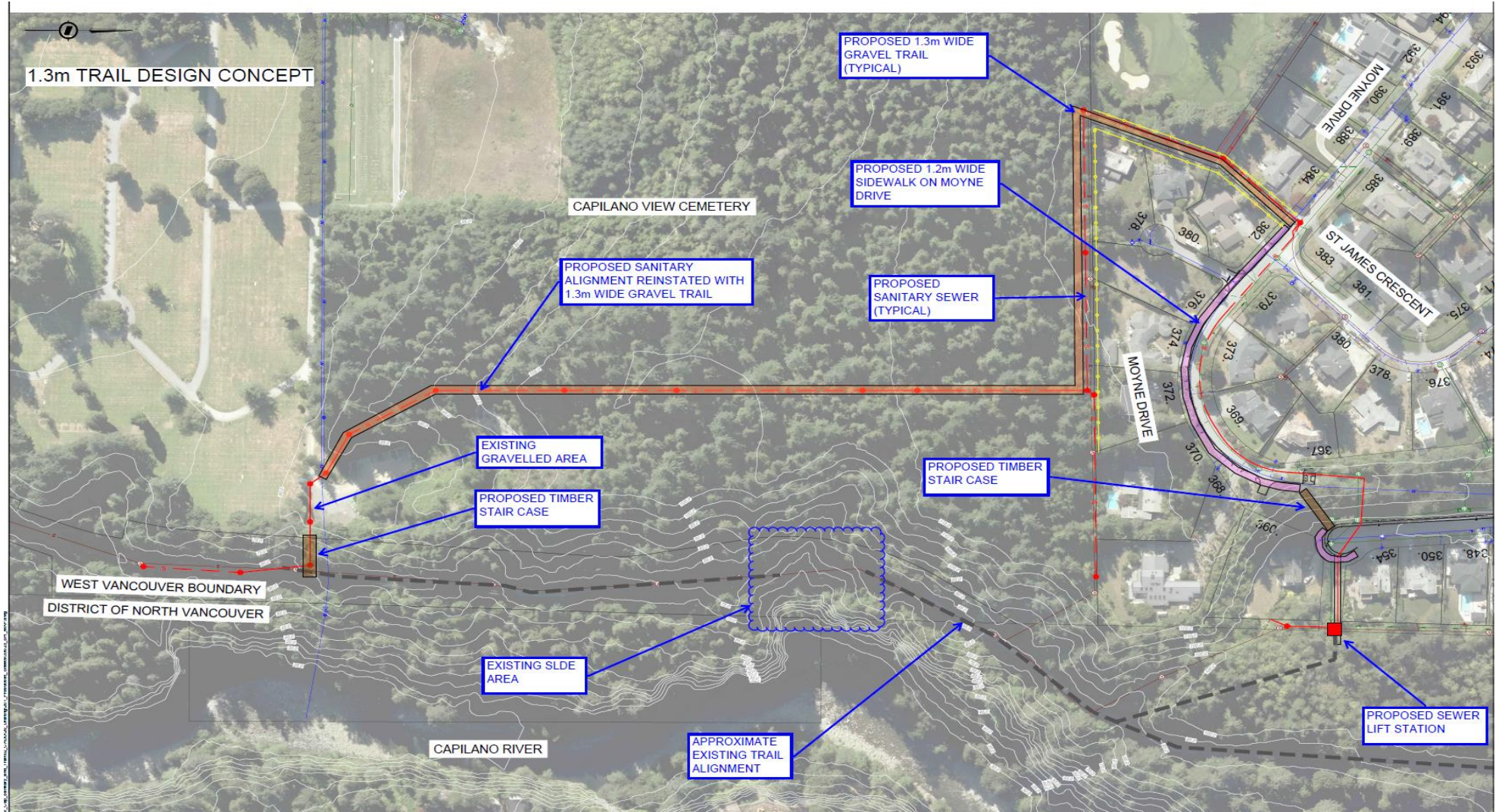


# 3 Trail Realignment



# Trail Alignment & Standard

- follow the sewer alignment
- 1.3 m wide naturalized gravel trail including staircases



# Trail Funding

Staff are recommending that the:

1.3 m wide naturalized gravel trail \$850,000 (Class C Cost Estimate), be funded through Community Serving Community Amenity Contributions (CAC's).

Currently there is \$2.139M in the Community Serving CAC fund. In addition, other District projects are also currently underway that will be requesting funding through the Community Serving CAC's.

# Staff Recommendation

THAT

1. staff initiate reinstatement of the Capilano Pacific Trail in an alternate alignment as described within this report, built to a standard width of approximately 1.3 metres; and
2. staff fund the Capilano Pacific Trail realignment at an estimated cost of \$850,000 through the Community Serving Community Amenity Contributions (CACs) fund.



**Thank You!**  
**Questions?**